

ALL RIGHTS RESERVED. NO PORTION OF THIS PUBLICATION, WHETHER IN WHOLE OR IN PART CAN BE REPRODUCED WITHOUT THE EXPRESS WRITTEN CONSENT OF SPC TECHNOLOGY.

SPC-F005.DWG

REVISIONS			DOC. NO. SPC-F005	Effective: 7/8/02	DCP No: 1398			
DCP #	REV	DESCRIPTION	DRAWN	DATE	CHECKD	DATE	APPRD	DATE
522	A	RELEASED	JWM	2/11/02	HO	2/11/02	DJC	2/11/02
1258	B	UPDATED TO TABULAR SPEC	HO	8/19/02	DJC	8/19/02	DJC	8/19/02

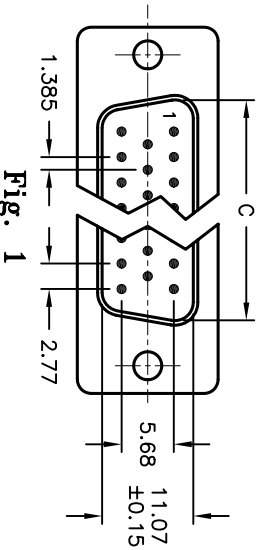
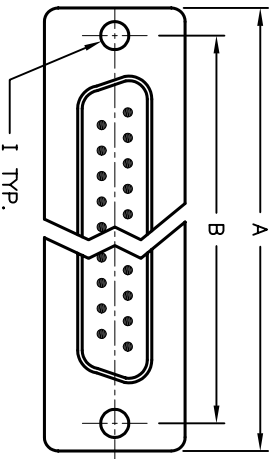


Fig. 1

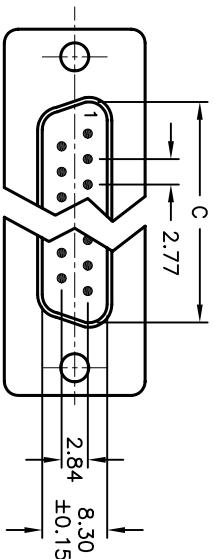
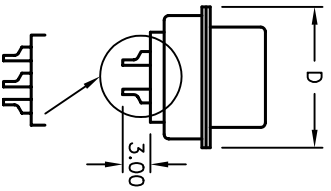
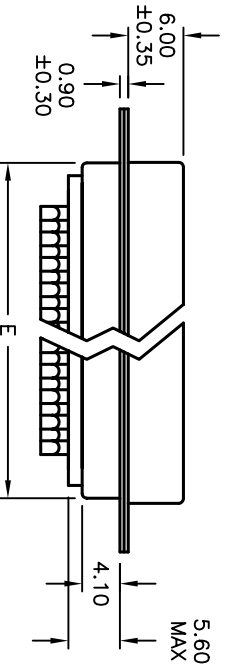
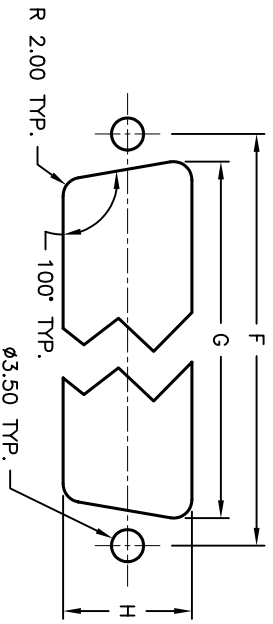


Fig. 2



3 ROWS FOR 50 PIN VERSION



PANEL CUTOUT

SPC TYPE	PIN		DIMENSIONS									
	NO.	Num.	Fig.	A ±0.35	B ±0.10	C ±0.15	D	E ±0.25	F	G	H	ØI
1486	9			30.80	24.99	16.30		19.20	24.99	19.00		3.05
1488	15			39.15	33.32	25.25		27.65	33.32	27.00		3.01
3323	25	2		53.00	47.04	38.96	12.60	41.10	47.04	41.00	10.40	3.05
1492	37			69.30	63.50	55.42		57.40	63.50	58.00		2.81
1494	50	1		67.00	61.00	52.80	15.30	55.30	61.00	55.00	14.00	3.05

- SPECIFICATION:**
- Shell: Steel, Zinc Yellow - Chromated
 - Insulator: PBT+30% Fiber Glass UL94V-0, Blue
 - Contact: Brass, Stamped, Gold-Plated on Contact Area
 - Tin-Lead on Solder Cup
 - Current Rating: 5 Amps
 - Contact Resistance: 15 Milliohms MAX.
 - Insulator Resistance: 1000 Megohms MIN.
 - Voltage: 500V AC for 1 Minute
 - Temperature: -50°C to +100°C

DISCLAIMER: ALL STATEMENTS AND TECHNICAL INFORMATION CONTAINED HEREIN ARE BASED UPON INFORMATION AND/OR TESTS WE BELIEVE TO BE ACCURATE AND RELIABLE. SINCE CONDITIONS OF USE ARE BEYOND OUR CONTROL, THE USER SHALL DETERMINE THE SUITABILITY OF THE PRODUCT FOR THE INTENDED USE AND ASSUME ALL RISK AND LIABILITY WHATSOEVER IN CONNECTION THEREWITH.

TOLERANCES:

Tolerances Unless Otherwise Specified
X ±0.2
.XX ±0.12

DRAWN BY:

JEFF MCWICKER

DATE:

2/11/02

CHECKED BY:

HISHAM ODISH

DATE:

2/11/02

APPROVED BY:

DANIEL CAREY

DATE:

2/11/02

SCALE:

NTS

DRAWING TITLE:

D-SUB MALE, SOLDER TYPE

SIZE

A

DWG. NO.:

TA-545

ELECTRONIC FILE

TA-545.DWG

REV

B

SCALE:

NTS

U.O.M.:

MILLIMETERS

SHEET:

1 OF 1