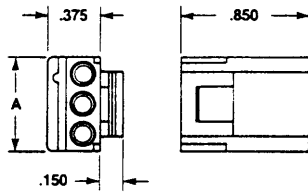


Free-Hanging Connectors

Material: 94V-2 Nylon, natural color

2, 3 and 4 Circuit Positive Lock Socket Housings

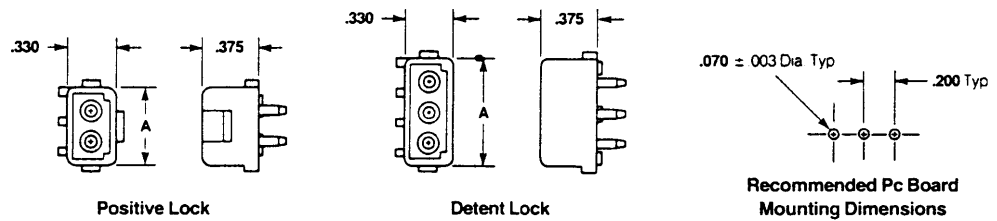


Number of Circuits	Dim. A	Socket Housing Part Numbers	Mates with Pin Headers
2	.435	1-480720-0	350539, 350540
3	.630	1-480721-0	350541, 350542
4	.830	1-480722-0	350543, 350544

Pc Board Pin Headers

Material:
Housing—94V-2 Nylon, natural color
Contacts—Copper alloy

2, 3 and 4 Circuit, In-Line

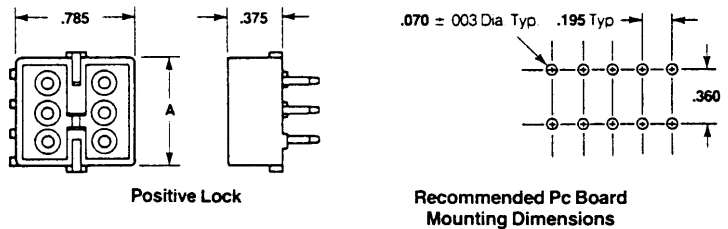


Related Product Data
Technical Documents—pg. 2169

Number of Circuits	Dim. A	Finish	Part Numbers				Mates with Socket Housing Part Number
			with Positive Lock		with Detent Lock		
			Standard Pin*	Long Pin**	Standard Pin*	Long Pin**	
2	.515	Tin plated	350539-1	350540-1	350209-1	350422-1	1-480318-0 Page 2163
		Gold plated	350539-2	350540-2	350209-2	350422-2	
3	.715	Tin plated	350541-1	350542-1	350210-1	350423-1	1-480303-0 Page 2163
		Gold plated	350541-2	350542-2	350210-2	350423-2	
4	.915	Tin plated	350543-1	350544-1	350211-1	350424-1	1-480424-0 Page 2163 770156 Page 2168
		Gold plated	350543-2	350544-2	350211-2	350424-2	

*Use Standard Pin for .062 thick pc board
** Use Long Pin for .125 thick pc board

6, 8, 10, 12 and 16 Circuit, Matrix



Number of Circuits	Dim. A	Finish	Part Numbers		Mates with Socket Housing Part Number
			Standard Pin*	Long Pin**	
6	.705	Tin plated	1-380999-0	350425-1	1-480270-0 Page 2163
		Gold plated	2-380999-0	350425-2	
8	.900	Tin plated	350212-1	350426-1	1-480283-0 Page 2163
		Gold plated	350212-2	350426-2	
10	1.095	Tin plated	1-380991-0	350219-1	1-480285-0 Page 2163
		Gold plated	2-380991-0	350219-2	
12	1.290	Tin plated	350213-1	350220-1	1-480287-0 Page 2162
		Gold plated	350213-2	350220-2	
16	1.680	Tin plated	350214-1	350427-1	1-480438-0 Page 2162
		Gold plated	350214-2	350427-2	

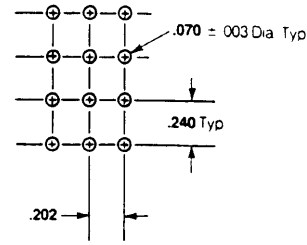
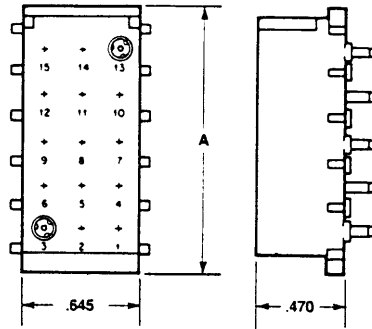
*Use Standard Pin for .062 thick pc board
** Use Long Pin for .125 thick pc board

Pc Board Socket Headers

Material:
Housing—94V-2 Nylon, natural color
Contact—Copper alloy

Related Product Data
Technical Documents—pg. 2169

6, 9, 12 and 15 Circuit, Matrix



Recommended Pc Board Mounting Dimensions

Number of Circuits	Dim. A	Finish	Part Numbers		Mates with Pin Housing Part Number
			Standard Pin*	Long Pin**	
6	.720	Tin plated	350641-1	350576-1	1-480276-0 Page 2161
		Gold plated	350641-2	350576-2	
9	.960	Tin plated	350642-1	350577-1	1-480277-0 Page 2161
		Gold plated	350642-2	350577-2	
12	1.200	Tin plated	350643-1	350578-1	1-480278-0 Page 2161
		Gold plated	350643-2	350578-2	
15	1.440	Tin plated	350644-1	350579-1	1-480324-0 Page 2161
		Gold plated	350644-2	350579-2	

*Use Standard Pin for .062 thick pc board
**Use Long Pin for .125 thick pc board