

**FUJIFILM**  
OFFICIAL IMAGING SPONSOR



**digital**  
Tools for the imagination.



*New*

**DIGITAL CAMERA**

# *FinePix F601 Zoom*

"Motion Photo" VGA Movie Recording



Ultra-high Sensitivity of ISO 1600

**Expanding the Possibilities of Digital Cameras with Fujifilm's 3rd Generation Super CCD System**

# *FinePix*



ISO **160**

ISO **400**



ISO **200**



ISO **800**

ISO **1600**



## Expanding the Possibilities of Digital Photography

The FinePix F601 Zoom is a palm-sized compact, lightweight and stylish digital camera yet packed with Fujifilm's state-of-the-art advanced digital technologies offering great shooting features and a newly designed user interface. Making possible things previous digital cameras only promised, the FinePix F601 Zoom opens up a new world of photography.



Actual Size

- **3rd generation 1/1.7 inch Super CCD** ensuring a higher level of image quality
- **3.1 million effective pixels** producing ultra-high quality images consisting of 2832 x 2128 (6.03 million) recording pixels
- **Light-sensitive Super CCD design allowing higher ISO sensitivity shooting of up to ISO 1600 for low light and high speed shots**
- **"Motion Photo" VGA movie recording at 15 frames per second**
- **High-performance EBC Fujinon 3X optical zoom lens** (equivalent to 36 to 108mm for a 35mm camera) and additional digital zoom function
- **Super Intelligent Shooting Control including new Auto White Balance, Auto Exposure and high precision AF system**
- **Full range of exposure control modes**
- **Newly designed multi-functional user interface** allowing users to comfortably operate all camera functions
- **Convenient voice memo function**

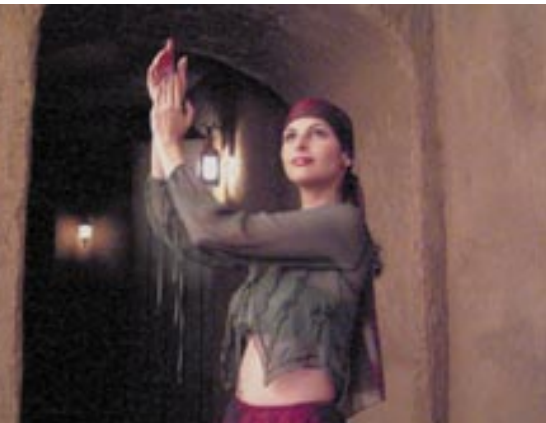
DIGITAL CAMERA  
**FinePix F601 Zoom**

Expanding the Possibilities of Digital Photography:  
Higher Sensitivities, Improved Performance  
and Total Control over Image Quality

ISO 1600



Normal mode, 1280 x 960 pixels, 1/30 sec., F2.8, ISO 1600 equivalent



**Beautifully Balanced Quality Images produced by Fujifilm's 3rd Generation Super CCD**  
With Fujifilm's latest 3rd generation 1/1.7 inch Super CCD, the FinePix F601 Zoom features 3.1 million effective pixels, which produce ultra-high quality images consisting of 2832 x 2128 (6.03 million) recording pixels, ensuring greater sensitivity, superior gradation, high S/N ratio and natural colors. In addition to beautifully balanced image

quality, the 3rd generation Super CCD offers ultra-high sensitivity and high-quality movie recording capabilities.

**Ultra-high ISO Sensitivity of 1600**

The FinePix F601 Zoom offers an extended ISO range allowing selection of the most appropriate sensitivity from five settings equivalent to 160, 200, 400, 800\* and 1600\* to match the shooting conditions. The ultra-high sensitivity of 1600, the highest ISO speed of any compact dig-

ital camera\*\*, is realized while maintaining image quality. This means that in addition to realizing superior image quality and natural colors under normal lighting situations, the camera enables outstanding fast-action and non-flash shooting under low-light conditions when set to higher ISO settings, which also helps to eliminate camera shake from hand-held picture taking. The Super CCD in the FinePix F601 Zoom uses innovative noise reduction technology to maintain image quality across all ISO sensitivities by reducing the noise that often occurs in images taken at higher ISO settings by digital cameras with conventional CCDs.

also been realized. The interaction between these devices allows the capturing of the most appropriate images for each shooting situation, realizing a higher level of overall image quality than ever before.

▪ **Super Intelligent Auto White Balance (AWB)**



The FinePix F601 Zoom's advanced Super Intelligent Auto White Balance precisely detects the lighting conditions of the subject, even in situations with several different lighting sources including flash, and evaluates each factor to deliver highly accurate and natural colors.

▪ **Super Intelligent Auto Exposure (AE)**  
The 64-zone TTL metering system con-

Fine mode, 2832 x 2128 pixels, 1/125 sec., F5.6, ISO 160 equivalent

tently produces perfect exposures, even under the most difficult lighting conditions.

▪ **Intelligent High Precision Auto Focus (AF)**

The auto focus system gives quicker and more accurate focusing. Moreover, the FinePix F601 Zoom also allows focusing on specific areas in the viewfinder using the AF Area Focus mechanism.

▪ **3X Optical Zooming with Digital Zoom Function**

The FinePix F601 Zoom features a high performance Super EBC Fujinon 3X optical zoom lens (equivalent to 36 to 108mm for a 35mm camera) and an additional digital zooming function up to 4.4X (in 1280 x 960-pixel mode).

▪ **Simple and Easy Picture Taking**

The FinePix F601 Zoom offers Auto and programmed Scene Position modes, which automatically control exposure, white balance and other adjustments to give great photos, easily.

▪ **Auto Mode AUTO**

The camera sets all the camera parameters for the user, assuring optimum settings.

Non-flash shooting under low lighting conditions



ISO 200 (1/20 sec., F5.6, Manual exposure mode)



ISO 1600 (1/20 sec., F5.6, Manual exposure mode)

"Freezes" quickly moving subjects



ISO 200 (1/125 sec., F8, Manual exposure mode)



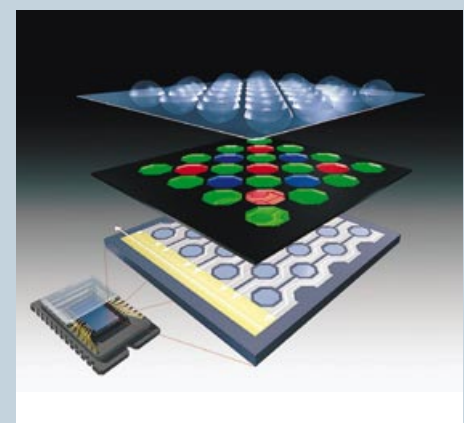
ISO 1600 (1/1000 sec., F8, Manual exposure mode)

▪ **Super Intelligent Shooting Quality Controls**

The image quality of the FinePix F601 Zoom has been improved over previous models through redesigning the various devices that determine quality. In particular, the auto white balance and automatic exposure (AE) have been designed to best match the characteristics of the new Fujifilm 3rd generation Super CCD, while highly precise automatic focusing (AF) has

\* In 1280 x 960-pixel mode only.  
\*\* As of January, 2002

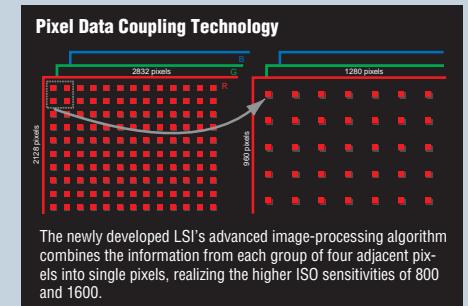
**Super CCD System: Inside out**



**Ultra-high light sensitivity**

Fujifilm's 3rd generation Super CCD system is not just a new CCD, but instead reflects a comprehensive improvement in image quality through consideration of the complete system including the CCD and new LSI.

Generally speaking, increasing the sensitivity of a CCD amplifies the noise in the images. However, with the 3rd generation Super CCD system, this problem has been resolved through further improvement of the CCD sensitivity characteristics and the use of Fujifilm's new Noise Reduction Technology which uses a new LSI to process both the luminescence and chroma information from captured images. As a result, the 3rd generation Super CCD system offers high sensitivity shooting



while maintaining outstanding picture quality. Fujifilm has also newly developed a Pixel Data Coupling Technology that is applied by the new LSI to realize higher ISO sensitivities of 800\* and 1600\*.  
\* In 1280 x 960-pixel mode only



# Expanding the Possibilities of Digital Photography: Versatile Camera Functions and Easy-to-use Operation

## Motion Photo

VGA Movie Recording



Fine mode, 2832 x 2128 pixels, 1/180 sec., F5.6, ISO 160 equivalent



PictureCradle (optional)

Top 4-frame Continuous Shooting mode



### Scene Position

There are four programmed Scene Position modes; Portrait, Landscape, Night Scenery, and Sports modes, and a Long-period Continuous Shooting in 1280 x 960-pixel mode (1.8 frames/sec. up to 40 frames), optimized for specific shooting situations.

### Manual Shooting for Complete Creative Control

Using the full range of manual shooting modes, the FinePix F601 Zoom allows complete control over all settings.

In addition to Programmed Auto Exposure (AE), the exposure can be controlled both by Shutter Priority AE (1/1000 sec. - 2 secs.), Aperture Priority AE (F2.8 - 8) and by Manual Exposure. In situations where exposure compensation is necessary, EV Exposure Compensation is possible in 1/3 increments from -2.1 to +1.5 EV. The Auto Bracketing function enables auto-

matic bracketing of each exposure by as much as ±1 EV in 1/3, 2/3 and 1 EV increments. The optimum metering system can be selected from 64-zone TTL Multi, Average and Spot metering to match a wide variety of lighting situations.

Adjustment of the ISO-equivalent sensitivity value can also be made between ISO 160 to 1600, while control of the flash (in 5 modes), manual focusing, macro shooting, high-speed Top 4-frame Continuous Shooting (up to 4 frames at 5 frames per second), white balance override, and other settings is also possible.

### "Motion Photo" VGA Movie Recording Capabilities

The advantages of the 3rd generation Super CCD enables the FinePix F601 Zoom to offer VGA-sized (640 x 480 pixel) movie recording at 15 frames per second with sound. Four times larger than the previ-

ously available QVGA (320 x 240 pixel) size, VGA video clips fill the screen of a monitor during playback. You can also enjoy QVGA-sized movie recording at the same frame rate. Captured video clip images are smooth and highly detailed, and are recorded in Motion JPEG format (AVI format) so that you can also enjoy viewing each frame as a high quality still image. Up to 223 seconds worth of VGA-sized video clips can be recorded on a single 128MB SmartMedia™ card.

### Audio Recording and Voice Memo

The FinePix F601 Zoom allows up to approx. 272 min. of audio recording on a single 128MB SmartMedia™ card. It also provides a convenient voice captioning mode that enables you to record a voice memo up to 30 seconds long to attach to the image files. Both types of sound files are stored in WAV format.

### Unique Easy-to-use User Interface Operation

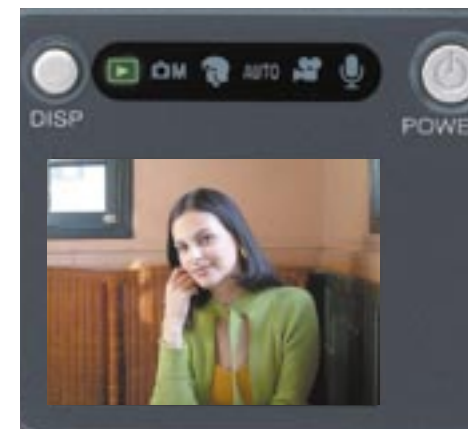
The FinePix F601 Zoom uses a newly designed easy-to-use and intuitive user



Easy-to-use graphical user interface  
Simulated LCD display image

interface allowing operation of all camera functions easily and simply for even more enjoyable camera operation.

### Playback Mode



Simulated LCD display image

Playback mode lets you review captured still images and video clips and play recorded audio files. Still and video images are shown on the high-resolution 1.5-inch LCD monitor while sound files are output from a speaker on the camera back. A wide range of still image playback features is available including Single Frame, 9 Multi-frame and 18X Zoom playback.

### Built-in Pop-up Flash



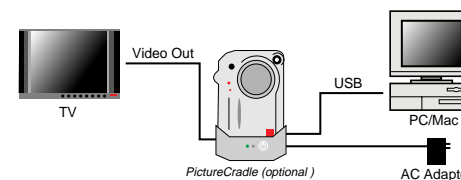
The built-in pop-up flash offers a variety of flash modes.

### Easy Connection with your PC

The USB connection and included FinePixViewer software makes it easy to download image files, video files and audio files to your PC for viewing or monitoring images and sound. FinePixViewer also lets you connect to Fujifilm's Internet services\*, while the included "PictureHello\*\*" utility software turns the FinePix F601 Zoom into a Webcam.

Using the optional stylish PictureCradle makes it even easier to transfer files to your PC and to supply power to the camera. Connecting the PictureCradle to a TV set with the video cable allows you to enjoy viewing captured still images or video clips on a TV screen.

\* The contents of this service will differ depending on the country in which you live.  
\*\* PictureHello can be used between certain types of FinePix cameras that have PC camera functions.



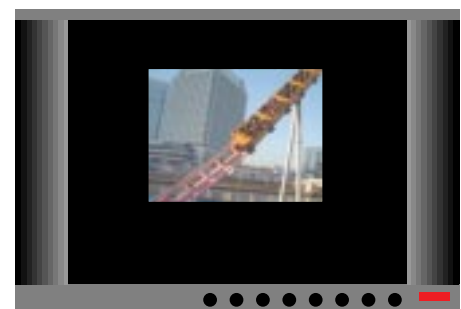
Fine mode, 2832 x 2128 pixels, 1/30 sec., F2.8, ISO 160 equivalent

### Long-lasting Battery

The FinePix F601 Zoom utilizes a rechargeable lithium-ion battery. With a fully recharged battery, you can take about 150 shots with the LCD set to on or 300 shots with the LCD off.



VGA Movie (FinePix F601 Zoom) on TV Monitor



QVGA Movie (previous model) on TV Monitor



VGA Movie (FinePix F601 Zoom)



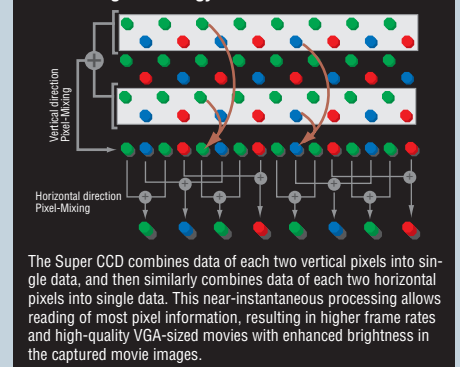
QVGA Movie (previous model)

### Super CCD System: Inside out

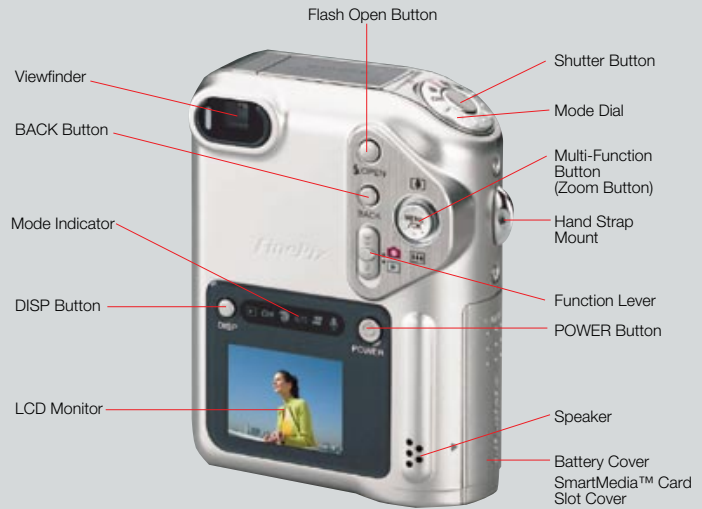
#### "Motion Photo" VGA Movie Recording

The 3rd generation Super CCD system has a greatly improved movie recording function. This realizes high-quality VGA-sized movie recording at a higher frame rate of 15 frames/sec. in the FinePix F601 Zoom through a world-leading breakthrough in horizontal and vertical direction Pixel-Mixing Technology, realized by the Super CCD's unique interwoven pixel arrangement. The technology combines pixel information in the vertical and horizontal directions, realizing higher frame rates and high-quality VGA movies with enhanced brightness in captured movie images.

#### Pixel Mixing Technology



# FUNCTIONS



# SPECIFICATIONS

## DIGITAL CAMERA FinePix F601 Zoom

<b>Number of effective pixels*</b>	3.1 million pixels			
<b>CCD sensor</b>	1/1.7-inch Super CCD in an interwoven pattern Number of total pixels: 3.3 million pixels			
<b>Number of recorded pixels</b>	2832 × 2128 (6.03 million) / 2048 × 1536 / 1280 × 960 / 640 × 480 pixels			
<b>File format</b>	Still image: JPEG (Exif) Movie: AVI (Motion JPEG) Design rule for Camera File system compliant / DPOF-compatible			
<b>Storage media</b>	SmartMedia™ card (3.3V, 2MB to 128MB)			
<b>Number of images</b>				
Modes	Still image (2832 × 2128 pixels)			Movie
Image quality modes	Fine	Normal	Basic	—
MG-16S/SW	6	13	33	Approx. 27 sec. / Approx. 66 sec. / Approx. 33 min.
MG-32S/SW	13	28	68	Approx. 55 sec. / Approx. 135 sec. / Approx. 67 min.
MG-64S/SW	26	56	137	Approx. 111 sec. / Approx. 271 sec. / Approx. 135 min.
MG-128S/SW	53	113	275	Approx. 223 sec. / Approx. 544 sec. / Approx. 272 min.
	The data sizes and numbers of images will vary slightly depending on the type of subject.			
<b>Lens</b>	Super EBC Fujinon 3X zoom lens			
<b>Lens focal length</b>	Equivalent to 36 - 108mm on a 35mm camera			
<b>Focus</b>	Autofocus / AF Area Focus / Manual Focus			
<b>Focus distance</b>	Normal: 60cm / 2.0 ft. to infinity Macro: 20 cm - 80 cm / 0.7 ft - 2.6 ft			
<b>Aperture</b>	F 2.8 / 4 / 5.6 / 8			
<b>Viewfinder</b>	Real-image optical viewfinder			
<b>Exposure control</b>	64-zone TTL metering-multi, spot, average			
<b>Exposure modes</b>	Programmed AE, Aperture Priority AE, Shutter-Priority AE, Manual			
<b>Sensitivity</b>	Equivalent to ISO 160, 200, 400 800/1600 (Only at 1280 × 960-pixel mode)			
<b>Shutter speed</b>	1/2000 - 3 sec. (in Auto mode)			
<b>White balance</b>	Automatic Manual (Fine, Shade, Fluorescent light (Daylight), Fluorescent light (Warm White), Fluorescent light (Cool White), Incandescent light)			
<b>Flash</b>	Auto flash using flash control sensor Effective range (at ISO 200): Wide angle / 0.2 - 4.7m / 7.8in - 15.4ft Telephoto / 0.2 - 3.0m / 7.8in - 9.8ft Flash mode: Auto, Red-eye Reduction, Forced Flash, Suppressed Flash, Slow Syncro			
<b>LCD monitor</b>	1.5-inch low temperature polysilicon TFT (110,000 pixels)			
<b>Video output</b>	NTSC or PAL (depending on local TV system)			
<b>Terminal</b>	USB Interface, power-input socket, cradle socket			
<b>Power source</b>	NP 60 battery (1035mAh) or AC-5V AC adapter (included)			
<b>Dimensions</b>	72.0 (W) × 93.0 (H) × 34.0 (D) mm / 2.8 (W) × 3.7 (H) × 1.3 (D) in.			
<b>Weight</b>	220g / 7.8 oz. (excluding battery)			
<b>Camera functions</b>				
Digital zoom	4.4X (640 × 480-pixel mode), 2.2X (1280 × 960-pixel mode), 1.4X (2048 × 1536-pixel mode)			
Shooting modes	Normal Auto, Portrait, Sports, Scene, Night Scene Continuous 5 frames / sec. up to 4 frames (Max.) 1.8 frames / sec. up to 40 frames (Only at 1280 × 960-pixel mode)			
Movie recording	640 × 480 pixels: 15 frames/sec. 320 × 240 pixels: 15 frames/sec. (With monaural sound, AVI format (Motion JPEG))			
Audio recording	Monaural sound, WAV format			
Voice Memo	Monaural sound, up to 30 sec., WAV format			
Playback	Single frame (with 18X Playback zoom), 9 Multi-frame			
Others	Self-timer, DPOF compatible			

**Accessories included**

- 16 MB SmartMedia™ card
- Lithium-ion battery NP 60
- Hand strap
- USB Cable
- AC Power Adapter AC-5VHS / AC-5VS
- CD-ROM
- USB driver
- FinePix Viewer
- DP Editor
- Apple QuickTime 5.0
- VideoImpression
- Adobe PhotoDeluxe® HE 4.0 for Windows



\* Number of effective pixels: The number of pixels on the image sensor which receive input light through the optical lens, and which are effectively reflected in the final output data of the still image.

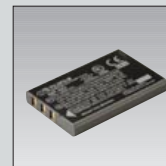
Specifications are subject to change without notice.

# OPTIONAL ACCESSORIES



**PictureCradle CP-FX601**

- AC-input
- USB connection
- Video-output



**Rechargeable Lithium-Ion Battery NP-60**



**Image Memory Card**  
MG-16SW  
MG-32SW  
MG-64SW  
MG-128SW



**Battery Charger BC-60**

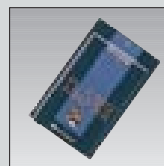
- Charges in approx. 2 hours



**Floppy Disk Adapter FD-A2**



**AC Power Adapter AC-5VH / 5VHS**



**PC Card Adapter PC-AD3**



**Soft case SC-FX601**



**Image Memory Card Reader SM-R2**

Apple is a registered trademark of Apple Computer Inc.  
QuickTime and the QuickTime logo are trademarks used under license.  
The QuickTime logo is registered in the U.S. and other countries.  
All other trademarks are the property of their respective holders.

For more information on the full range of Fujifilm digital products, please visit our Website: <http://home.fujifilm.com>



FUJIFILM PHOTO FILM CO., LTD.

26-30, NISHIAZABU 2-CHOME, MINATO-KU, TOKYO 106-8620, JAPAN

Ref. No. EB-201E (SK-02-02-DT-MW) Printed in Japan © 2002 Fuji Photo Film Co., Ltd.