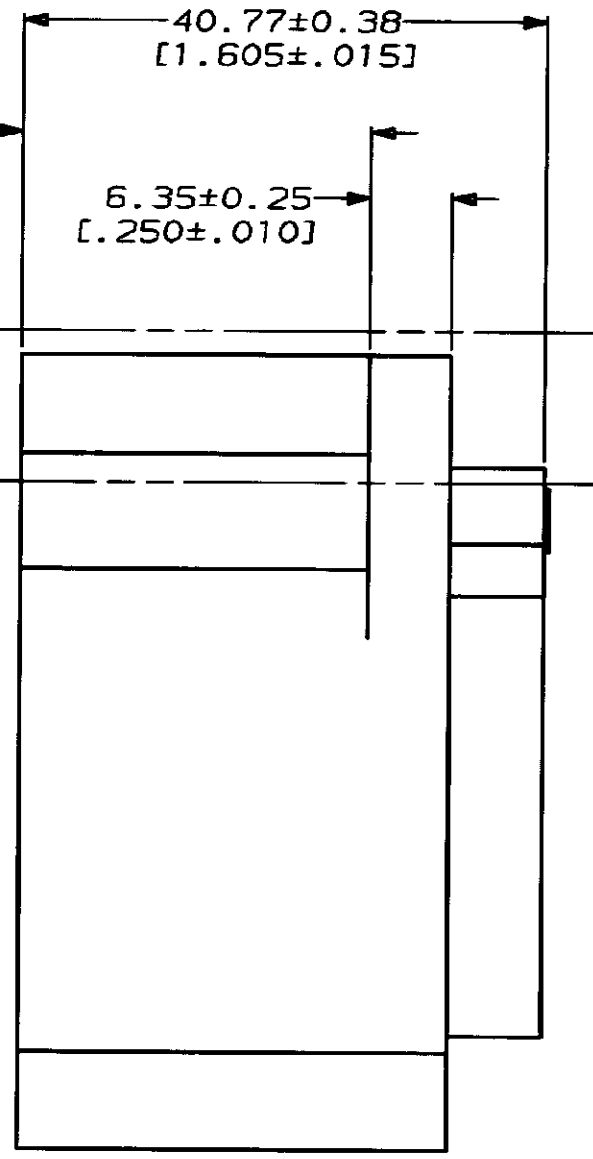
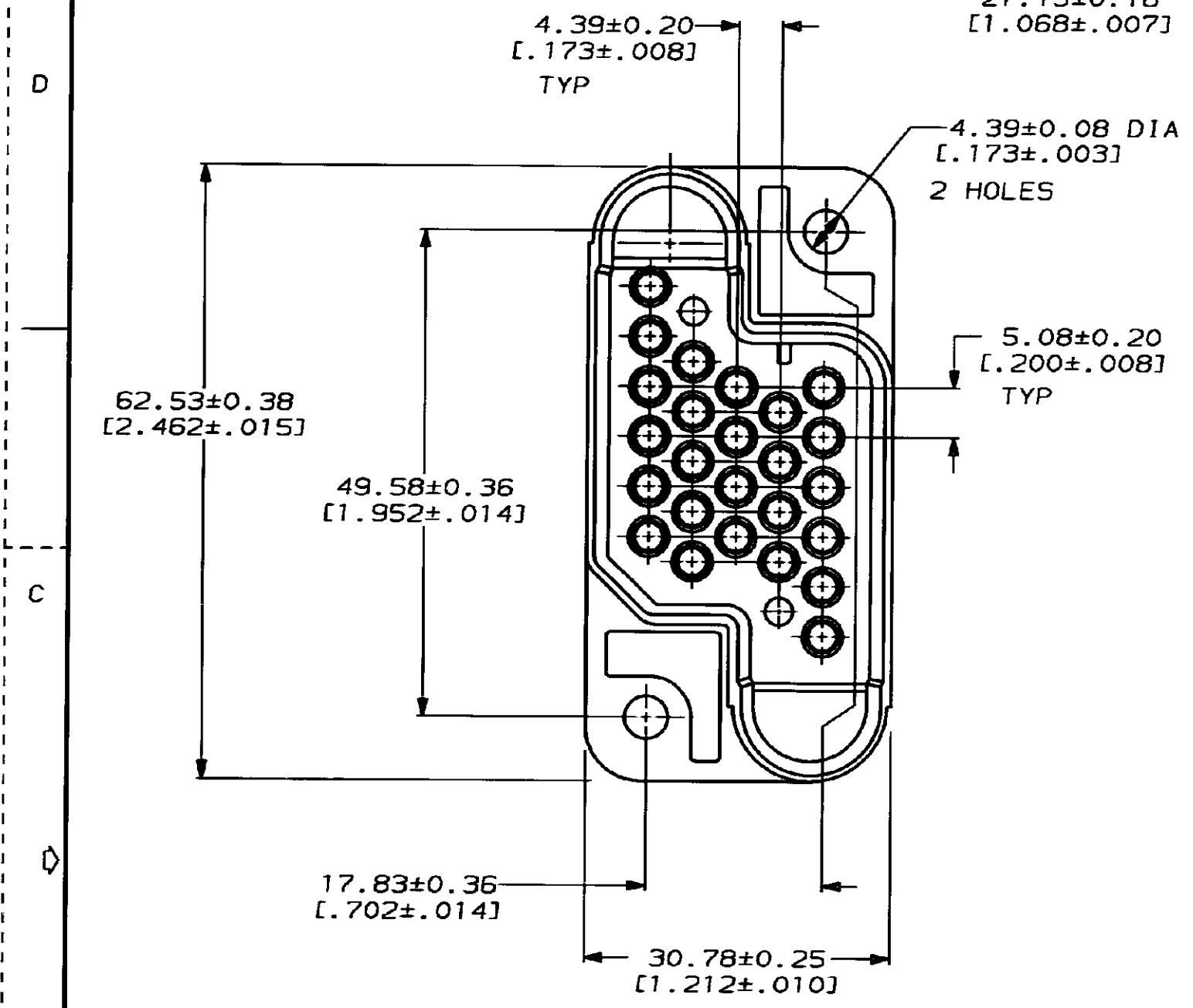
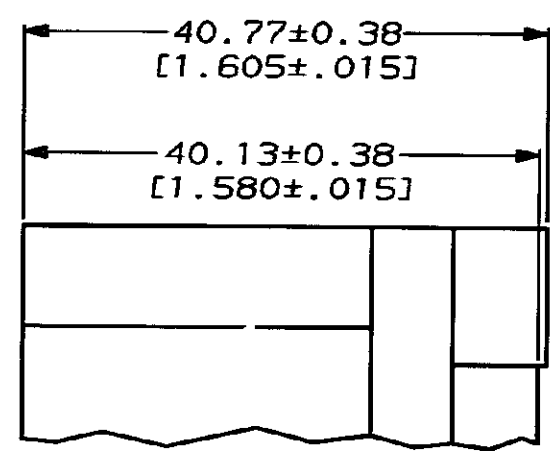
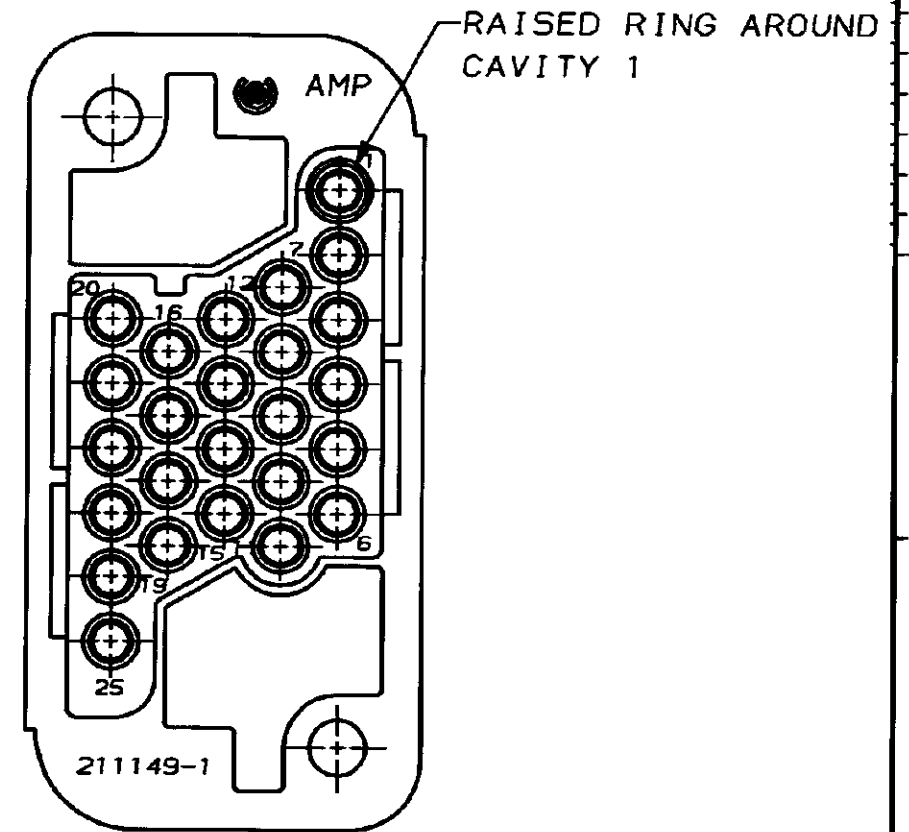


DRAWING MADE IN THIRD ANGLE PROJECTION
 THIS DRAWING IS UNPUBLISHED. RELEASED FOR PUBLICATION
 © COPYRIGHT 19 BY AMP INCORPORATED. ALL INTERNATIONAL RIGHTS RESERVED.

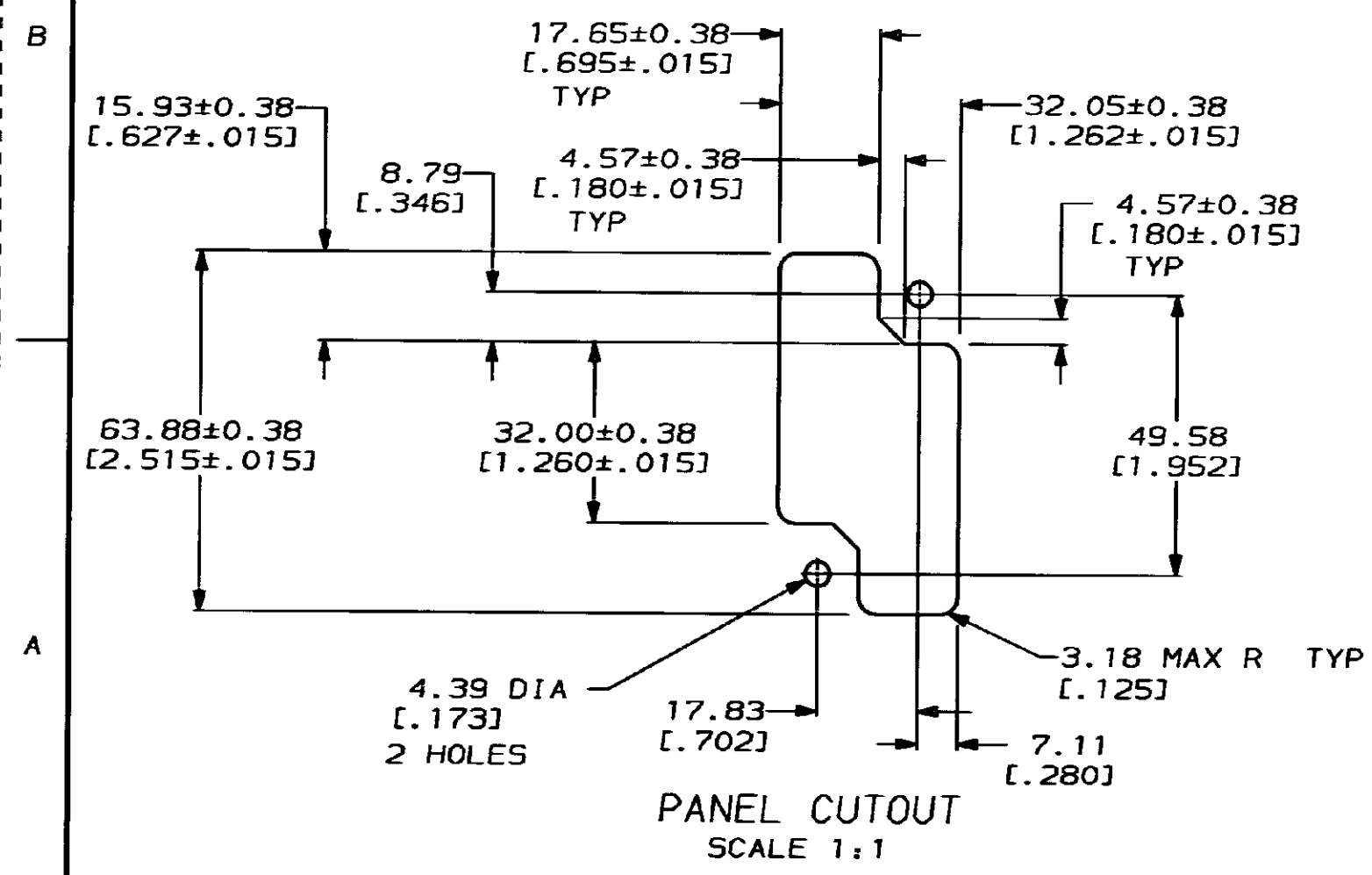
REVISIONS									
MOD	LOC	DIST	P	F	ZONE	LTR	DESCRIPTION	DATE	APPD
1	BD	39				E	REDRAWN & REV PER ECN BD5737	01/14/92	-
						F	REV PER EC 0020-0925-93	08/11/93	AT



1. THIS CONNECTOR MATES WITH SOCKET HOUSING 211150.
2. CAVITY 1 AND 25 SHOULD NOT BE USED WITH GROUND PIN.



DETAIL Z
 RAISED STANDOFF 2 PLACES
 211149-3 ONLY



SEE DETAIL Z	211149-3
AS SHOWN	211149-1
STANDOFF	PART NO
	PART NO

DO NOT SCALE PRINT. UNLESS SPECIFIED DIMENSIONS IN mm [INCHES] TOLERANCES ON: 2 PLC DEC ± 0.13 [.005] 3 PLC DEC ± - ANGLES ± -	DR 01/14/92 C. OBERMAN	AMP AMP Incorporated Harrisburg, PA 17105-3608		
	CHK 1-22-92 R. STONE			
	APPD 1-22-92 A. TRAVIS	NAME		
	MATERIAL POLYESTER, UL 94V-0 RATED, BLACK	APPD 1-23-92 C. RÖHDE	PIN HOUSING, 25 POSN METRIMATE	
FINISH -	APPLICATION SPEC -	SIZE C 00779	CAGE CODE 00779	DRAWING NO 211149
WEIGHT -		SCALE 2:1		SHEET 1 OF 1

CUSTOMER DRAWING