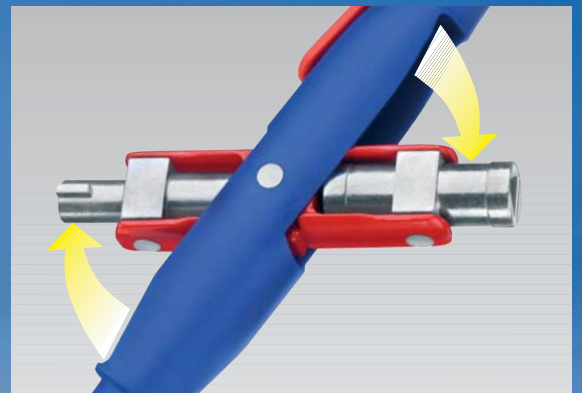
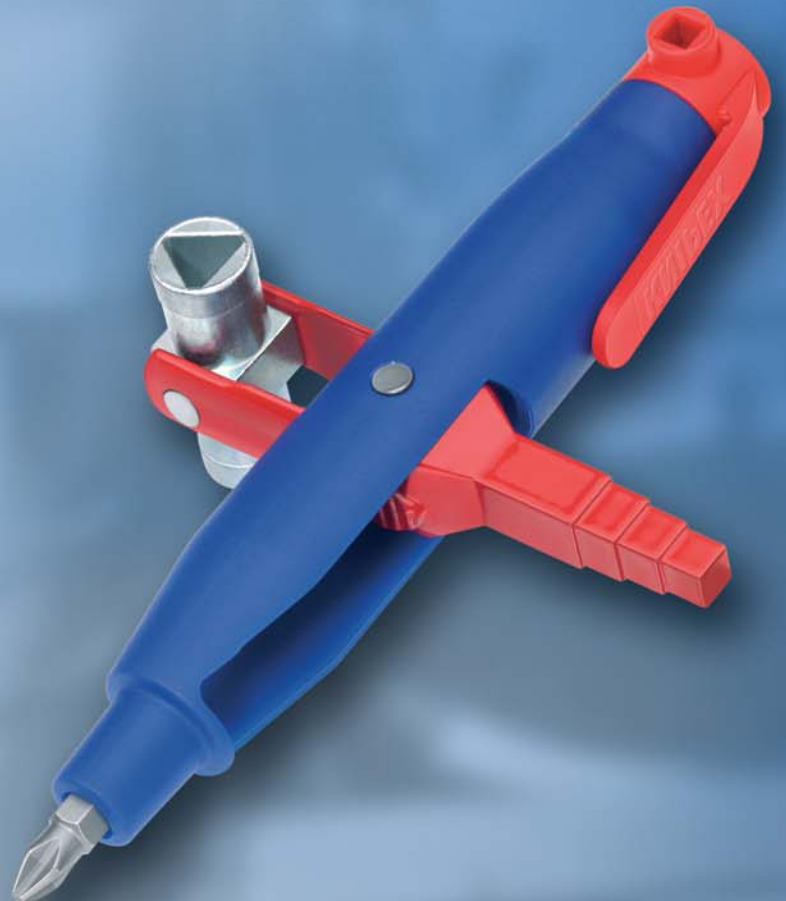


KNIPEX Pen-Style Control Cabinet Key and Profi-Key

NEW



- Practical pen-style with fastening clip
- Swivel-out key profiles
- Sturdy construction for versatile application





00 11

Pen-Style Control Cabinet Key, for all standard cabinets and shut-off systems



00 11 07

- ▶ easy to carry pen-style control cabinet key with fastening clip
- ▶ four different key profiles can be utilized by swivelling the key holder
- ▶ for control cabinets and shut-off systems in the supply of gas, water and electricity
- ▶ for technical installations in buildings, e. g. air conditioning and ventilation systems, shut-off valves, mains switch-boards, etc.
- ▶ female square 5; 6 + 8 mm
- ▶ triangular 9 mm
- ▶ two-way key bit 5 mm dia. (internal) / 9 mm dia. (external)
- ▶ universal 1/4" bit adapter for standard bits (permanent magnet for retaining)
- ▶ additional bit adapter for 1/4" bits inside one key profile
- ▶ with bit insert: cross recess PH 2 and possibility of safekeeping a second bit
- ▶ practical clip for safe transport
- ▶ corpus and fastening clip made from GRP plastic material; tool holder and key profiles zinc diecast

Article No.	EAN-Code	Capacity			Length	g
		mm	mm	Ø mm		
00 11 07	063018	5/6/8	9	9	145	140



Opening a control cabinet with two-way key (Article No. 00 11 07)



Square for air bleeding (Article No. 00 11 07 + 00 11 08)



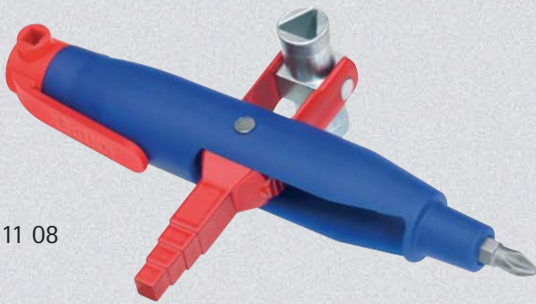
Tightening a screw with cross recess bit PH2 (Article No. 00 11 07 and 00 11 08)



Square in steps for opening a door without handle (Article No. 00 11 08)

00 11

Pen-style Profi-Key, for all standard shut-off systems



00 11 08

- ▶ easy to carry pen-style control cabinet key with fastening clip
- ▶ three different key profiles can be utilized by swivelling the key holder
- ▶ multi-purpose key for the builder
- ▶ key for heating, air-conditioning, sanitary and building engineering, e. g. for door and window handles or for air bleeding heaters
- ▶ female square 5 + 8 mm
- ▶ triangular 9 mm
- ▶ male square in steps of 6 / 7 / 8 / 9 mm
- ▶ universal 1/4" bit adapter for standard bits (permanent magnet for retaining)
- ▶ additional bit adapter for 1/4" bits inside one key profile
- ▶ with bit insert: cross recess PH 2 and possibility of safekeeping a second bit
- ▶ practical clip for safe transport
- ▶ corpus and fastening clip made from GRP plastic material; tool holder and key profiles zinc diecast

Article No.	EAN-Code	Capacity			Length	g
		mm	mm	Ø mm		
00 11 08	063025	5 + 8	9	6/7/8/9	145	130

Distributed by:

L100 01738/01/09.06/5.000/GB

KNIPEX-Werk C. Gustav Putsch KG

Oberkamper Straße 13
42349 Wuppertal / Germany

Phone: +49(0)2 02/47 94-0
Fax: +49(0)2 02/47 74 94

Internet: www.knipex.de
E-Mail: info@knipex.de