

8

7

6

5

4

3

2

1

F

E

D

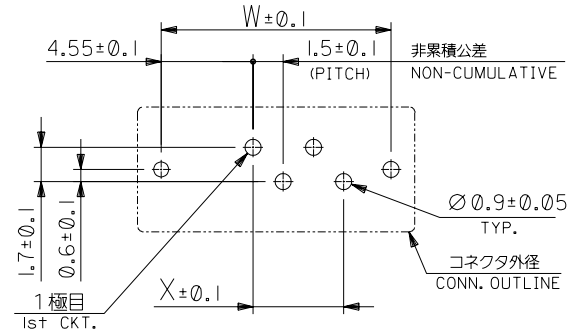
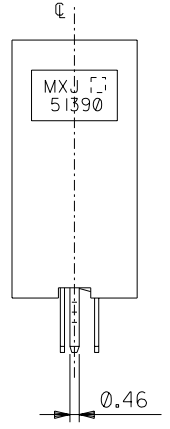
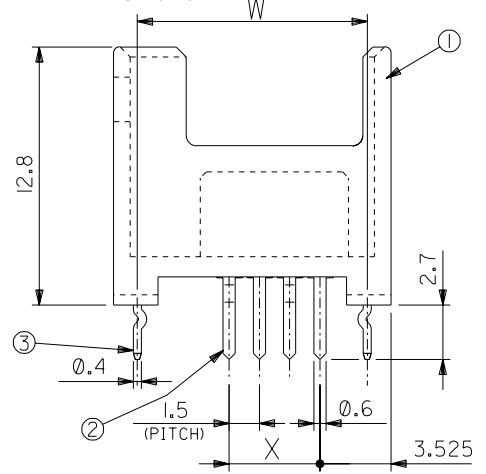
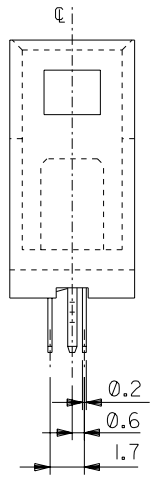
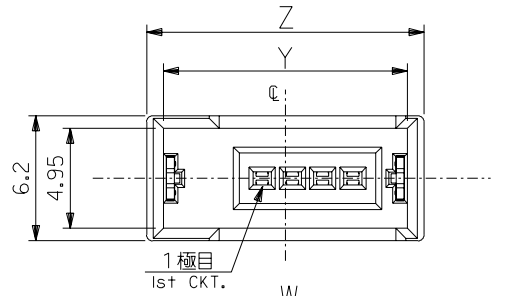
C

B

A

注記
NOTES.

1. 材料
MATERIAL
①ハウジング：ガラス入りPA66 UL94V-0 色：黒
HOUSING:G.F.PA66 UL94V-0 COLOR:BLACK
- ②ターミナル：銅合金
TERMINAL:COPPER ALLOY
- ③ソルダーペグ：銅合金
SOLDER PEG:COPPER ALLOY
2. メッキ仕様
PLATING
ターミナル
TERMINAL
接点部：金メッキ 0.3 μm MIN.
CONTACT AREA:GOLD 0.3 μm MIN.
半田付け部：半田メッキ 2.0 μm MIN.
SOLDER AREA:TIN-LEAD 2.0 μm MIN.
下地メッキ：ニッケル下地 2.0 μm MIN.
UNDER PLATING AREA:NICKEL 2.0 μm MIN.
ソルダーペグ
SOLDER PEG
半田付け部：半田メッキ 2.0 μm MIN.
SOLDER AREA:TIN-LEAD 2.0 μm MIN.



基板取付穴推奨寸法 (±=0.8~1.6)
RECOMMENDED P.C.B. HOLE DIM.(±=0.8~1.6)

11.4	4.5	12.1	13.75	51390-0411	51390-***11	4
9.9	3.0	10.6	12.25	51390-0311		3
W	X	Y	Z	製品番号 MATERIAL No.	MODEL No.	極数 CKT.

EC NO. DRAWN: CHK: APPR:	EC NO. DRAWN: CHK: APPR:	REVISED EC NO. J2004-1553 DRWN:N.YOSHIDA '03/12/15 CHK: M.YAGI APPR:J.MIYAZAWA	REVISED EC NO. J2003-5066 DRWN:N.YOSHIDA '03/06/05 CHK: M.YAGI APPR: YO.IITO	RELEASED EC NO. J2003-1106 DRWN:N.YOSHIDA '02/10/22 CHK: M.YAGI APPR: YO.IITO	DESCRIPTION	MATERIAL 材料	GENERAL TOLERANCES: (UNLESS SPECIFIED) 一般公差	SCALE 4-1	DESIGN UNITS <input checked="" type="checkbox"/> mm <input type="checkbox"/> INCH	THIRD ANGLE PROJECTION	DIMENSIONS: <input type="checkbox"/> mm <input type="checkbox"/> INCH <input checked="" type="checkbox"/> mm ONLY	SHT REVISE ON CAD ONLY
		B	A	0	SEE NOTES	SEE NOTES	10 UNDER 未満	±0.2	DRAWN BY & DATE N.YOSHIDA '02/04/15	TITLE: 1.5mm PITCH EZ CONN. S/T REC. ASS'Y		
						FINISH 仕上げ	10 OVER 30 UNDER 未満	±0.25	CHECKED BY & DATE Y. Ito			
						WIRE RANGE 適用線径範囲	30 OVER 以上	±0.3	APPROVED BY & DATE Y. Ito	MOLEX	MATERIAL NO. SEE CHART	DRAWING NO. SD-51390-003
						INS. RANGE 被覆外径	ANGLE 角度	±3°	CAD FILENAME 51390003.S01		SHEET NO. 1 OF 1	SIZE B

8

7

6

5

4

3

2