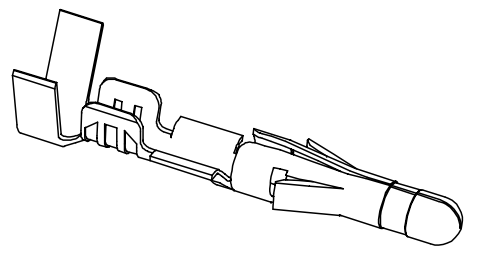
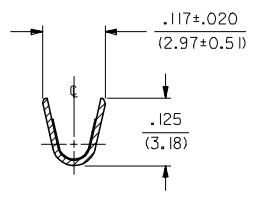
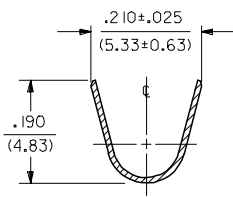
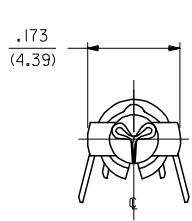
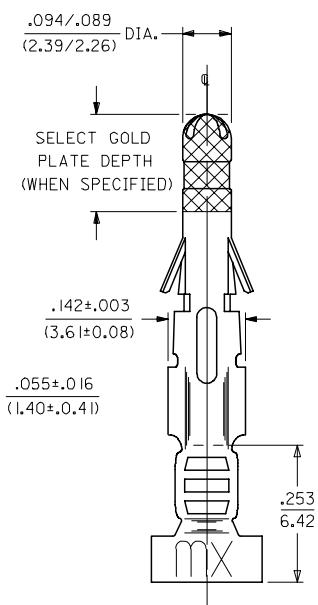
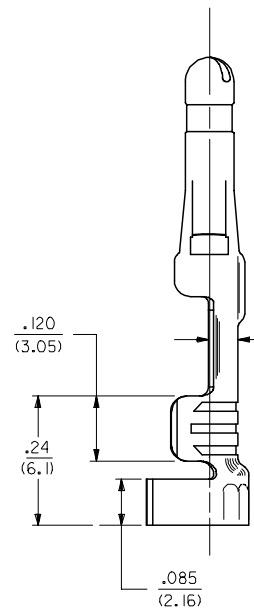
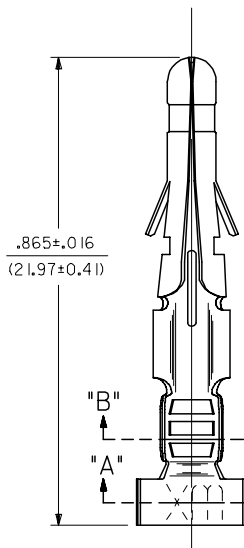


PART NO.	ENG. NO.
02-09-2103	1190-(P901)L
02-09-2101	1190-(P901)
02-09-6110	1190-(591)L
02-09-6101	1190-(591)
02-09-6106	1190-(550)L
02-09-6100	1190-(550)



SECT. "A-A"

SECT. "B-B"



SEE NOTE

NOTES:

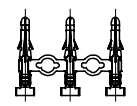
- MATERIAL:  
CARTRIDGE BRASS
- FINISH CODES:  
901 HOT TIN DIP .000020/(0.00051) MIN.  
591 SELECT GOLD PLATE .000050/(0.00127) MIN. IN CONTACT AREA,  
OVER .000050/(0.00127) MIN. NICKEL OVERALL  
WITH .000010/(0.00025) MAX. GOLD FLASH OVERALL.  
550 SELECT GOLD PLATE .000015/(0.00038) MIN. IN CONTACT AREA,  
OVER .000030/(0.00076) MIN. NICKEL OVERALL  
WITH .000010/(0.00025) MAX. GOLD FLASH OVERALL.
- PRODUCT SPECIFICATION: PS-43660-9999
- TERMINAL FOR USE WITH .093/(2.36) SERIES HOUSINGS AND WILL  
ACCEPT 14 THRU 20 AWG WIRE.
- INSERTION FORCE: 3.5 LBS. MAX. WHEN TERMINAL IS INSERTED  
INTO .093 SERIES HOUSING.
- RETENTION: 20 LBS. MIN. FROM HOUSING.

DIMENSION FROM THE END OF THE TERMINAL TO THE END OF THE BRUSH  
ON THE WIRE CRIMPED INTO THE TERMINAL.

**LEGEND**

1190-(\*\*\*\*)\*

- FORM: BLANK=CHAIN, L=LOOSE
- FINISH CODE: P=PREPLATE, BLANK=POSTPLATE



CHAIN FORM  
FULL SCALE

LEAD FREE UPDATE EC NO: UCP2005-2754 DRWN: JONE 2005/06/24 CHKD: ADERR 2005/06/24 APPR: FSM TH 2005/06/24 REV: BS	QUALITY SYMBOLS	GENERAL TOLERANCES (UNLESS SPECIFIED)	DIMENSION STYLE	SCALE	DESIGN UNITS	THIRD ANGLE PROJECTION
	=0	mm INCH	IN/MM	6:1	INCH	
	=0	4 PLACES ± --- ± ---	DRAWN BY DATE			
		3 PLACES ± --- ± .010	GEP 10/26/87			
	2 PLACES ± 0.25 ± .014	CHECKED BY DATE				TITLE
	1 PLACE ± 0.13 ± ---	RW 10/26/87				CRIMP TERMINAL, MALE
	ANGULAR ±1/2°	APPROVED BY DATE				FOR 14 THRU 20 AWG WIRE
		RAS 10/26/87				MOLEX MOLEX INCORPORATED
		MATERIAL NO.	SEE CHART			SD-1190-*
		DOCUMENT NO.				1 OF 1
		SHEET NO.				