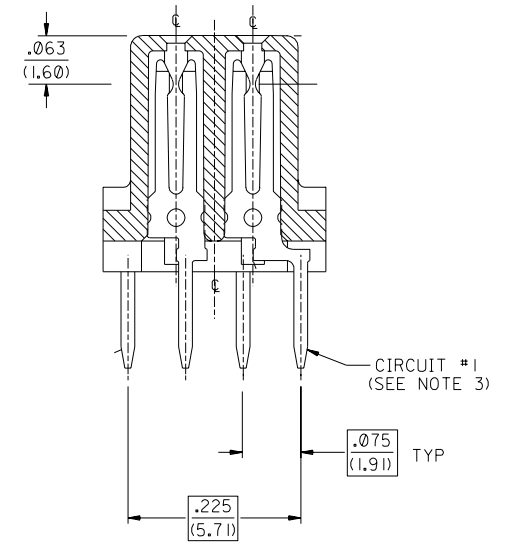
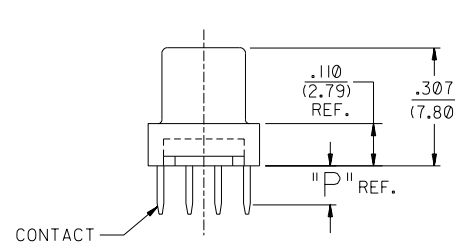
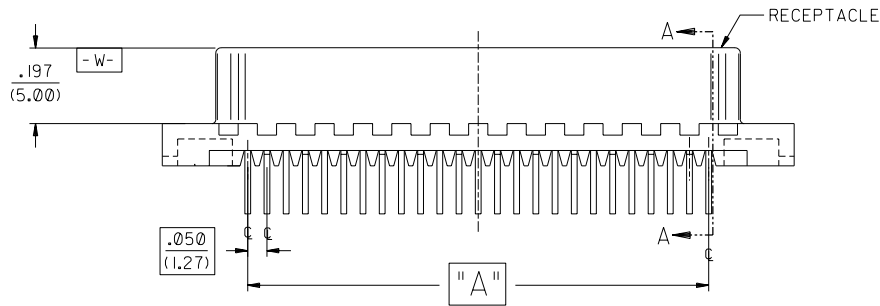
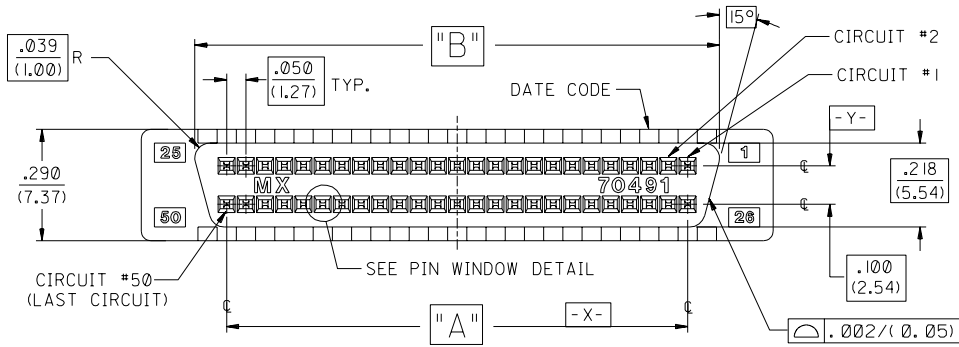
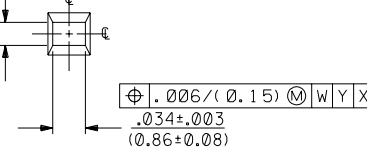
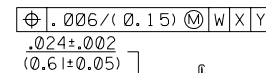
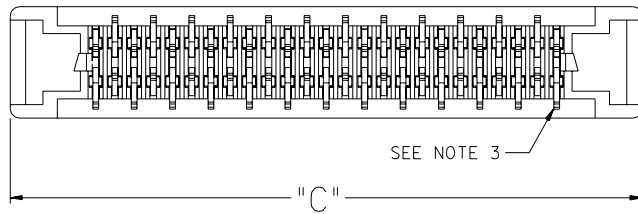


50 CIRCUIT SHOWN



SECTION "A-A"
SCALE 8:1



PIN WINDOW DETAIL
SCALE 10:1

NOTES:

- SEE SHEET 2 FOR PART NO.S AND CHARTED DIMENSIONS AND P.C. BOARD LAYOUT.
- 50 CIRCUIT SHOWN FOR ILLUSTRATION PURPOSES ONLY.
- TAIL PATTERN FIXED AT CIRCUIT NO. (1) POSITION FOR ALL CIRCUIT SIZES SHOWN.

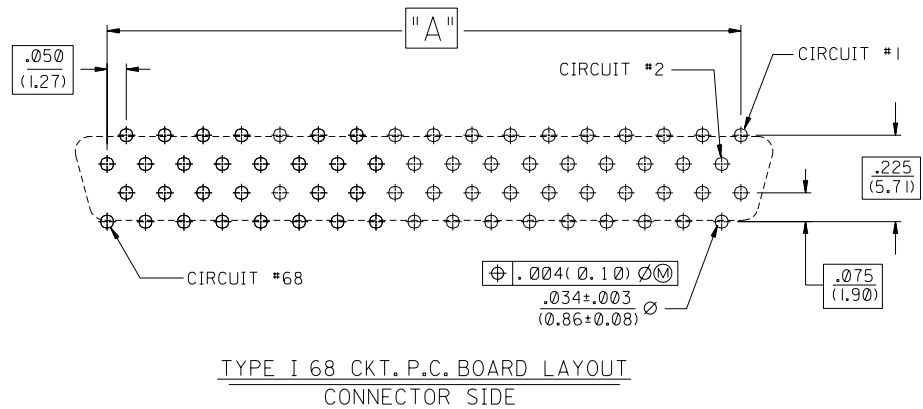
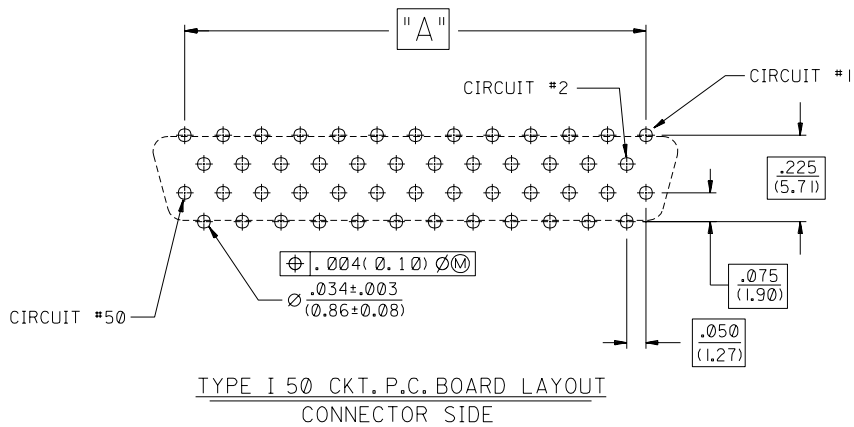
2	H
1	H
MFG. SH. REV.	

F	ADDED PIN WINDOW DETAIL PER ECR # U80357 J. LONG 97/08/01
H	OBsolete PART # ECR# UCP2005-0311 BSMART 04/08/05
E	CHANGED PACKAGING PER ECR # U51013 95/04/07 J. LONG
DI	ADDED EDP NO. PER ECR # U40602 5/06/94 JL/BOWEN
G	ADD LEADFREE NOTE ECR# UCP2004-1925 DMORGAN 04/04/02
LTR.	REVISIONS

DIMENSIONS SHOWN (METRIC) INCH	
UNLESS OTHERWISE SPECIFIED TOLERANCES: ANGULAR ± 1/2°	
3 PLACE	± .010
2 PLACE	± --- ± 0.25
1 PLACE	--- ± ---
DRAFT WHERE APPLICABLE MUST REMAIN WITHIN DIMENSIONS	
DRWG. BY	J. Long
CHK'D. BY	DCB
APP'D. BY	J. D.
SCALE	4:1

REVISE ONLY ON CAD SYSTEM	
TITLE SALES ASSEMBLY SCSI VERTICAL RECEPTACLE	
MOLEX INCORPORATED LITSE,ILL. 60532	SHEET NO. 1 of 2 DATE U.S.A. 06/17/92
PART NO. SDA-70491-1	DRWG. NO. SDA-70491-1
FILE NAME 51049111.DGN	THIS DRAWING CONTAINS INFORMATION THAT IS PROPRIETARY TO MOLEX INC. AND SHOULD NOT BE USED WITHOUT WRITTEN PERMISSION.
DRW. SIZE TC	DRW. SIZE C

EDP NO.	CKT. SIZE	DIM. A		DIM. B		DIM. C		DIM. P TAIL LENGTH	RECOMMENDED PCB	
		INCH	MM	INCH	MM	INCH	MM		INCH	MM
015-87-0201	50	1.200	30.48	1.366	34.70	1.645	41.78	.125	.062 OR .093	1.57 OR 2.36
015-87-0203	50	1.200	30.48	1.366	34.70	1.645	41.78	.165	.125	3.18
015-87-0205	68	1.650	41.91	1.816	46.13	2.095	53.21	.125	.062 OR .093	1.57 OR 2.36
015-87-0207	68	1.650	41.91	1.816	46.13	2.095	53.21	.165	.125	3.18



NOTES:

- REFER TO PS-79058 PRODUCT SPEC. FOR ELECTRICAL, MECHANICAL AND ENVIRONMENTAL SPECIFICATIONS.
- MATERIAL:
RECEPTACLE HOUSING: GLASS FILLED LCP (LIQUID CRYSTAL POLYMER; COLOR-BLACK; UL 94V-0 CONTACTS: PHOSPHOR BRONZE
- PACKAGING:
PARTS PACKAGED IN TUBES PER PK-70873-0427.
- PLATING:
SELECTIVE GOLD: THICKNESS= 30 MICROINCHES/(0.76 MICROMETERS) MINIMUM.
SELECTIVE TIN: THICKNESS= 75 MICROINCHES/(1.90 MICROMETERS) MINIMUM.
NICKEL UNDERPLATE OVERALL.

NOTE FOR LEAD FREE CONVERSION:
THE PRIMARY SHIPPING CARTON WILL BE LABELED "COMPLIANT TO ROHS DIRECTIVE 2002/95/EC AND ELV ANNEX II OF DIRECTIVE 2000/53/EC". CARTONS WITHOUT THIS LABEL MAY CONTAIN PRODUCT WITH LEAD.

LTR.		REVISIONS		LTR.		REVISIONS		MFG. SH. REV.	
		F	SEE SHEET I						
H	SEE SHEET I	E	SEE SHEET I						
G	SEE SHEET I	DI	SEE SHEET I						
LTR.	REVISIONS	LTR.	REVISIONS						

DIMENSIONS SHOWN (METRIC) INCH		UNLESS OTHERWISE SPECIFIED TOLERANCES: ANGULAR ± 1/2°		REVISE ONLY ON CAD SYSTEM	
3 PLACE	± .010	INCH	METRIC		
2 PLACE	± ---	± 0.25			
1 PLACE	--- ± ---				
DRAFT WHERE APPLICABLE MUST REMAIN WITHIN DIMENSIONS				DRAWING NO. SDA-70491-1***	
DRWG. BY: J. Long	CHK'D. BY: DCB	FILE NAME: S7049112.DGN	DATE: 06/17/92	THIS DRAWING CONTAINS INFORMATION THAT IS PROPRIETARY TO MOLEX INC. AND SHOULD NOT BE USED WITHOUT WRITTEN PERMISSION.	
APP'D. BY: J D	SCALE: :	SEE CHART		DIV. SIZE: TC C	