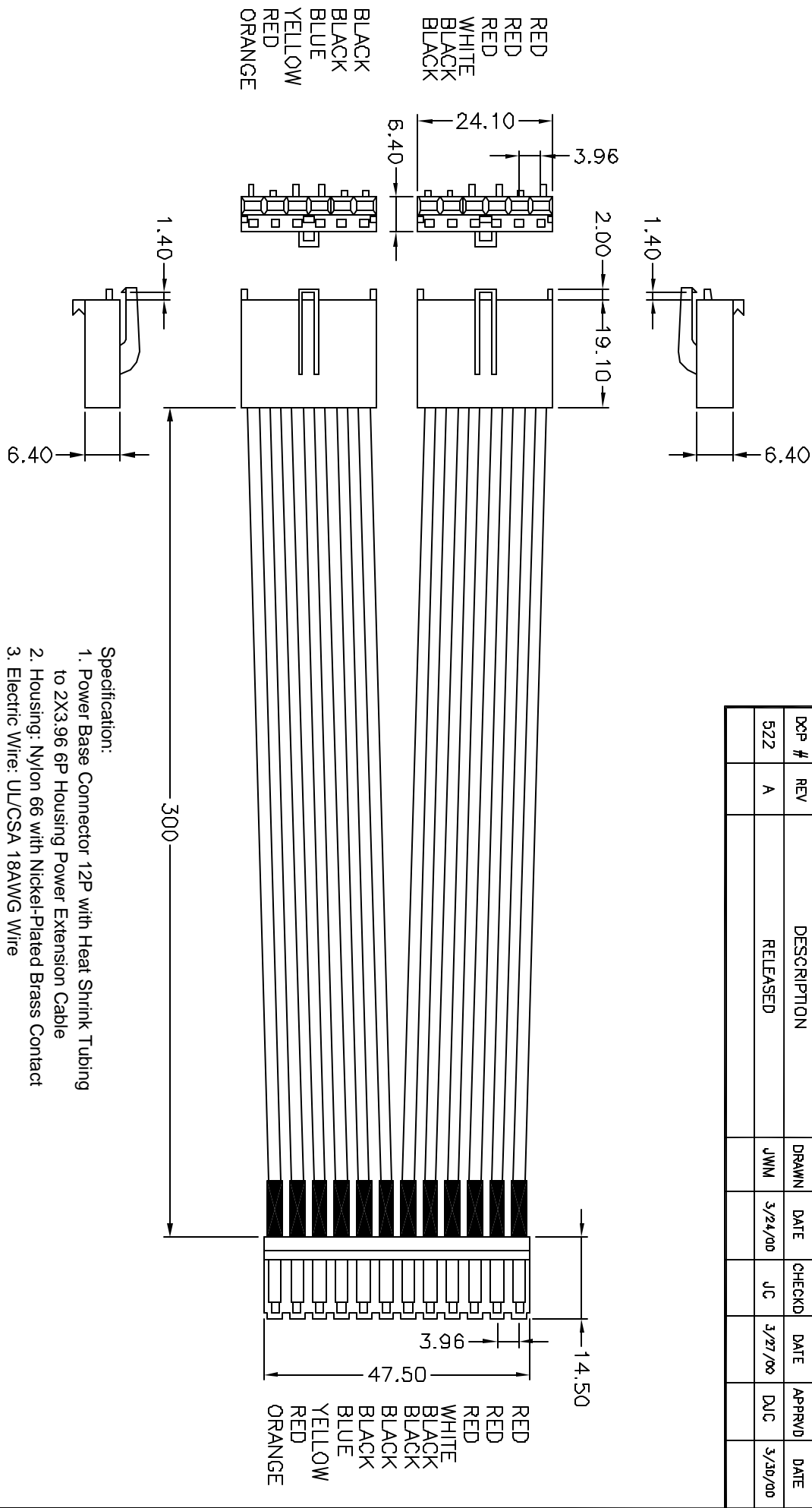


ALL RIGHTS RESERVED. NO PORTION OF THIS PUBLICATION, WHETHER IN WHOLE OR IN PART CAN BE REPRODUCED WITHOUT THE EXPRESS WRITTEN CONSENT OF SPC TECHNOLOGY.

REVISIONS				DOC. NO.	SPC-FD05	Effective:	12/21/98	DCP No.	880
DCP #	REV	DESCRIPTION	DRAWN	DATE	CHECKD	DATE	APPRVD	DATE	
522	A	RELEASED	JWM	3/24/00	JC	3/27/00	DJC	3/30/00	



ALL STATEMENTS AND TECHNICAL INFORMATION CONTAINED HEREIN ARE BASED UPON INFORMATION AND/OR TESTS WE BELIEVE TO BE ACCURATE AND RELIABLE. SINCE CONDITIONS OF USE ARE BEYOND OUR CONTROL, THE USER SHALL DETERMINE THE SUITABILITY OF THE PRODUCT FOR THE INTENDED USE AND ASSUME ALL RISK AND LIABILITY WHATSOEVER IN CONNECTION THEREWITH.



Tolerances Unless Otherwise Specified: X=±0.2 [.008] .XX=±0.12 [.005]		DRAWING TITLE: Motherboard Extension			
DRAWN BY:	DATE:	SIZE DWG. NO. 3372 ELECTRONIC FILE 84N1052.dwg REV A			
Jeff McVicker	3/24/00				
CHECKED BY:	DATE:				
JOHN COLE	3/27/00				
APPROVED BY:	DATE:	SCALE: NTS U.O.M.: Millimeters SHEET: 1 OF 1			
Daniel Carey	3/30/00				

SPC-FD05.DWG