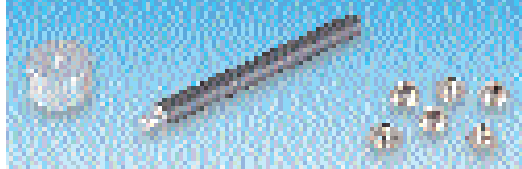


Mfrs. List No: J0117 = 430-500, J0604F = 265-100, J0605F = 265-111, J0606F = 265-123

STA11

Type	H (mm)	W (m)	D (m)	Order Code	Price Each		
					1+	5+	10+
Conductive Vermahide							
Charcoal grey	1.5	0.7	3.0	430-500			
Static Dissipative							
Beige	2.0	1.2	3.3	265-100			
Grey	2.0	1.2	3.3	265-111			
Blue	2.0	1.2	3.3	265-123			

Rivet Stud Assemblies and Tool



Pack of 10mm two-part rivet studs suitable for mounting on anti-static matting up to 5mm thickness such as the VERMAHIDE and NORASTAT matting detailed above.

The assembly tool consists of a dolly and punch for rivetting the studs in the desired location(s) on the mat. It is supplied with instructions.

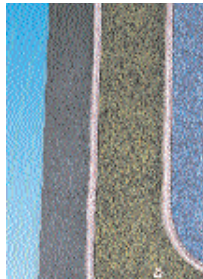
Note: Connections of elements of an ESD protected area should be made to only one common point on static dissipative mats that do not have a conductive bottom layer to provide a reliable link between studs, i.e. on 3 layer (buried conductive layer) matting.

Mfrs. List No: J5260F = 522-703, J5265 = 265-147

STA12

Order Multiple=5	Order Code	Price Each	
		5+	200+
Rivets	522-703		
Order Multiple=1	Order Code	Price Each	
Studding tool		1+	10+
	265-147		

Floor Mats



- Conductive EVA: chemically resistant and non-slip. Surface resistivity $<10^5 \Omega/\text{sq}$.
- Static Dissipative Vermafelt: heavy-duty bonded fibre flooring. Surface resistivity $<10^7 \Omega/\text{sq}$.
- Static Dissipative Normastat: durable, heat and wear resistant rubber. Surface resistivity $<10^6 \Omega/\text{sq}$ approx.
- All mats fitted with 2 x 10mm press studs
- Conforms with **BS EN100 015-1**

Mfrs. List No.

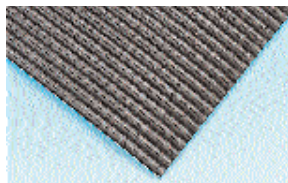
C031D = 179-811, C031B = 179-812, C0504 = 213-445

STA13

Type	H (mm)	W (m)	D (m)	Order Code	Price Each		
					1+	5+	10+
Conductive							
EVA	2.5	0.6	1.2	175-812			6
EVA	2.5	1.2	2.4	175-813			
Static Dissipative							
Vermafelt, green	5.0	1.0	1.5	179-811			
Vermafelt, blue	5.0	1.0	1.5	179-812†			
Norastat, 2-layer, grey	2.5	1.2	1.5	213-445			

† Available until stocks are exhausted

Ribbed Vinyl Floor Mat



- Non-slip
- Easy to cut
- Cushioned
- Excellent lay-flat properties
- Dark brown colour
- Includes 10mm male grounding snap

H = 3.1mm, W = 1.2m, D = 1.8m

Surface resistivity $2 \times 10^5 \Omega/\text{sq}$

Surface to ground resistance $7.0 \times 10^7 \Omega/\text{sq}$

STA107

Mfrs. List. No.	Order Code	Price Each	
		1+	3+
80140	165-463		

Conductive Acrylic Paint, 3.8L



- Tough one part floor coating
- Coverage: 28 to 37m² per 3.8L pot
- Excellent electrical properties
- Ideal in manufacturing, test, assembly and stores areas
- Applied with brush, roller or spray
- Colour: Grey
- Adheres to concrete, wood, plastic and metal

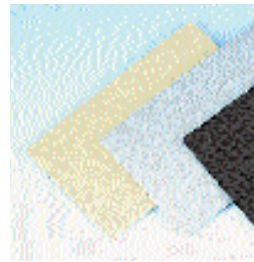
NB. Min 2 coats recommended for maximum paint performance

Surface resistivity $3.8 \times 10^6 \Omega/\text{sq}$

STA112

3.8L Pot	Order Code	Price Each	
		1+	3+
	165-293		

Table and Floor Mats



- **2 layer mats:** Static dissipative rubber upper layer, conductive lower
 - Heat/Solder splash resistant
 - Excellent frictional properties
 - Will not drain battery powered pcbs
- **3 layer mats:** Soft vinyl 'sandwich' construction
 - Durable static dissipative upper layer
 - Conductive middle layer
 - Dissipative, non-slip lower foam layer
 - 2 female snap fasteners fitted
 - Table mats include 1 wrist strap grounding system
 - Floor mats include a 4.6m ground cord

- **3m Ground Cord:** Allows interface of 722 workstation monitor and 733 splitter kit with one or more table mats

STA97

W (m)	D (m)	Mfrs. List No.	Order Code	Price Each		
				1+	10+	50+
Table Mats – 2 Layer						
Beige	0.6	1.2	8755	997-006		
Blue	0.6	1.2	8760	997-018		
Grey	0.6	1.2	8765	997-020		
Table Mats – 3 Layers						
Beige	0.6	1.2	8212	997-031†		
Floor Mats – 2 Layer						
Blue	0.8	11.0	8756	997-079		
Grey	0.8	11.0	8761	997-080		
Floor Mats – 3 Layers						
Grey	1.2	1.8	8203	997-110		
Ground Cord, 3m						
			2389	997-122		

† Available until stocks are exhausted

Static Safe Chairs



- Stable 5-star base
- Durable woven covers
- Adjustable height and back
- Resistance-to-ground, 10^4 to $10^5 \Omega$
- High lift version available with footrest ring
- Seat height range: 877-694 – 460-580mm, 877-700 – 630-760mm

STA81

Standard	Order Code	Price Each		
		1+	5+	10+
High lift, with footrest	877-694			
	877-700			

continued