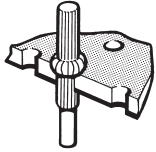


Terminal Pins and Sockets — continued

Terminal Pins



- Terminal pins designed to have a constant height above the board when inserted



PCB Hole Dia.	Minimum Matrix	Type	Mfrs. List No.	Order Code
1.02	2.54 (0.1")	2144	18 0222D	329-599
1.32	3.8 (0.15")	2140-3073	18 0219H	329-605
	Insertion tool	2151	22 0230H	329-617

PCB3

PCB Hole Dia.	Quantity Per Pack	Order Code	Price Per Pack			
			1+	10+	25+	50+
Pins						
1.02	1000	329-599				
1.32	1000	329-605				
Insertion Tool						
1.02 pins	Each	329-617				

PCB Shorting Links



- Uninsulated shorting links which have precision 1mm contact point
 - Made of brass with gold finish
- Pins, L = 9, Dia. = 1.00

Mfrs. List No. D3080F05 = 175-318, D3082F05 = 175-319

FOR ALTERNATIVE SHORTING LINKS SEE **BOOK 3, SECTION 8**

PCB41

Pitch	Order Code	Price Per Pack			
		1+	25+	50+	100+
5.08mm (0.2")	175-318				
10.16mm (0.4")	175-319				

PCB Design Software – Windows

Electronic CAD

NUMBER ONE SYSTEMS

Modular, Expandable Design System

The following four software modules can be used stand-alone or as part of an integrated design environment.

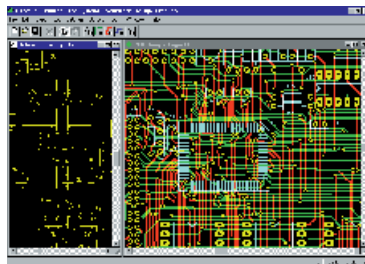
If all modules are installed, simply draw the schematic with EASY-PC, highlight the digital sections of the circuit and simulate them with PULSAR. Select the analogue sections and simulate them with ANALYSER. Make modifications to the circuit configuration and component values until the simulations give the performance required, the design complete with connectivity can be translated into the PCB. The connectivity and design rules can be checked automatically to ensure that the PCB matches the schematic.

PCB101

Easy PC for WINDOWS 95™

Schematic Capture and PCB CAD

NUMBER ONE SYSTEMS



- Designs both PCB layouts and schematic circuit diagrams
- Full connectivity between schematic and PCB
- Comprehensive design rule error and connectivity report
- Includes a comprehensive component library
- Links automatically to Multirouter, Analyser, Pulsar and Layan
- Compliance checking upgrade for existing DOS versions

Drawing area	1.0m by 1.0m	Positional resolution	10µm
Printing	Any WINDOWS® printer	Plotting	HPGL A and B
Manufacturing files output	Gerber Photo-plotter, Excellon		

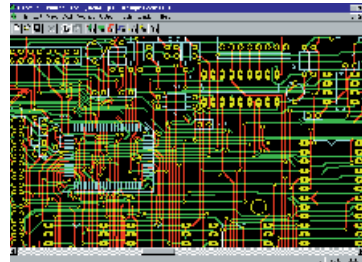
System requirements:- Pentium PC with at least 16MB of RAM, WINDOWS 95® or WINDOWS NT 4.0®

PCB136

	Order Code	Price Each
Easy PC for WINDOWS®	156-450	1+
Upgrade Easy PC Professional XM for DOS to WINDOWS®	156-462	
Upgrade Easy PC Professional for DOS to WINDOWS®	156-474	
Upgrade Easy PC for DOS to WINDOWS®	156-486	

Multirouter for WINDOWS 95™

NUMBER ONE SYSTEMS



- Powerful multi-pass autorouter for Easy PC for WINDOWS®
- Shape based autorouter for single and double sided boards
- Grid less routing handles difficult off – grid components like D – Connectors and surface mount packages
- Multi pass routing refines the layout, mitring corners, removing unnecessary track segments and vias
- Compliance checking upgrade for existing DOS versions

System requirements:- Easy PC for WINDOWS 95®

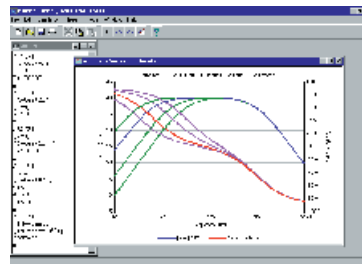
PCB137

	Order Code	Price Each
Multirouter II for WINDOWS®	156-498	1+
Upgrade Multirouter for DOS to WINDOWS®	156-504	

Analyser for WINDOWS 95™

Analogue Simulation

NUMBER ONE SYSTEMS



- Carry out what if simulations, change circuit configuration and note changes to frequency response
- Combine two Y axis on a single graph plot, overlay dozens of different sets of results on a single graph
- Powerful cursor now shows co-ordinates, slope, equivalent inductance or capacitance for both Y axis
- Results can be imported in to reports or other documents, graphs can be exported as bitmap files
- When linked with Easy-PC for WINDOWS 95® Analyser will update automatically whenever a schematic or netlist is changed
- All internal limitations on circuit size have been removed, the only limitation is the PC memory available

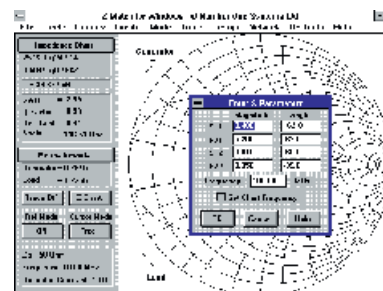
System requirements:- Pentium PC with at least 16MB of RAM, WINDOWS 95® or WINDOWS NT 4.0®

PCB135

	Order Code	Price Each
Analyser for WINDOWS®	156-516	1+
Upgrade Analyser III Pro for DOS to		
Analyser for WINDOWS®	156-528	
Upgrade Analyser III for DOS to		
Analyser for WINDOWS®	156-530	2

Z-Match Professional for Windows

NUMBER ONE SYSTEMS



Z-Match Professional

Z-Match Professional for Windows is a software implementation of the well known paper smith chart developed by Philip Smith at Bell Laboratories in 1939.

It retains all of the graphical advantages of the original Smith Chart while incorporating many features to eliminate repetitive calculations and to make the chart more accessible to all users.