

## Wiring Pencils



- Wiring pencils for PCB prototyping, repair and circuit modification
- Two types with finger operated brake to control wire tension
- Supplied with a full bobbin of either tinned copper wire (TCW) or polyurethane covered copper wire (QSE)

## ROADRUNNER

PCB127

	Order Code	1+	5+	10+
Pencil with brake QSE wire	<b>967-348</b>			
Pencil with brake TCW wire	<b>967-350</b>			
Standard Wiring pencil	<b>145-223</b>			

## Wiring Pencil Kits



- Two starter kits for experimentation or repair

## ROADRUNNER

Specifications:

### Prototyping Starter Kit

Wiring pencil with brake  
Tinned copper wire  
SRBP matrix board 105 x 65 hole dia 1mm, 0.1 inch grid  
100 x 1mm double sided solder pins

### Repair kit

Wiring Pencil with brake  
Tinned copper wire (TCW)  
Solderable enamel wire (QSE)  
Tweezers  
Modelling knife

PCB126

	Order Code	1+	5+	10+
Prototyping Starter Kit	<b>967-361</b>			
Repair Kit	<b>967-373</b>			

## Wiring Pencil Wire (Non-insulated) Tinned Copper Wire 1/0.25 (33SWG)

## ROADRUNNER



- Suitable for discrete wiring, shorting links and PCB track repairs

Current rating 228mA

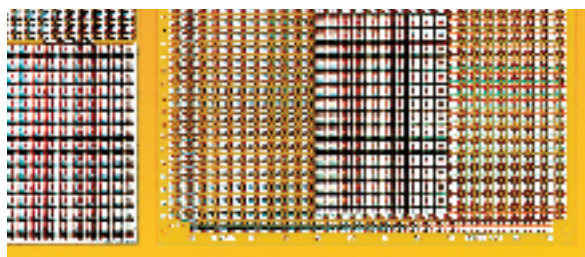
PB129

	Order Code	1+	5+	10+	25+
2 24m Spools Per Pack	<b>148-735</b>				

## Prototyping Boards

### Surface Mount

### ROTH ELECTRONIK



- Experimental boards for surface mount
- Single or dual matrix plated through hole
- Double sided plated through hole

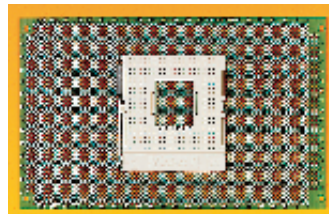
Material	Size	Hole spacing	Hole dia.	Connector type	No. of Ways	Mfrs. List No.	Order Code
Fibre glass	53 95	1.27 1.27	0.35	—	—	RE435 EP	803-297
Fibre glass	100 160	1.27 1.27	0.35	DIN41612 Type C	32/64/96	RE436 EP	803-303
		2.54 2.54					

134

	Order Code	1+	5+	10+	50+	100+
RE435 EP	<b>803-297</b>	24.00	20.40	18.00	15.30	14.10
RE436 EP	<b>803-303</b>	77.88	62.31	56.64	51.93	47.94

## Pin Grid Array

## ROTH ELECTRONIK



Socket not included

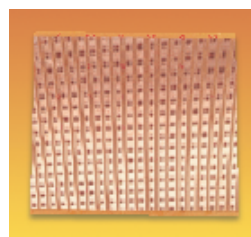
- Staggered hole layout suitable for pin grid array devices
- Double sided plated through hole

Material	Hole spacing	Connector type	No of ways	Mfrs. List No.	Order Code
Fibre glass	2.54 2.54	DIN 41 612 Type C	32/64/96	RE440EP	835-110

PCB132

	Order Code	1+	5+	10+	50+	100+
RE440EP	<b>835-110</b>					

## Matrix Double-Sided 'X-Y' Stripboard



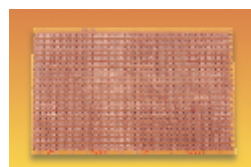
- Double-sided prototyping board
- Strips at right angles to each other on either side forming an x-y matrix

Matrix Pitch	L	W	Strips mm	Rows	Order Code
0.1"	243.8	221.0	82 1.9	82	147-900

PCB31

	Order Code	1+	10+	25+	50+
	<b>147-900</b>				

## Eurocard Single-Sided Stripboard



- Pre-grilled eurocard SRBP (synthetic resin bonded paper)
- Flame retardant to **UL94V-0**
- DIN41612 connector mounting holes at each end
- Manufactured to **BS4584 Section 102.7**

L = 160, W = 100, Th = 1.6

Matrix Pitch	Strips mm	Rows
0.1"	36 1.9	62

FOR SUITABLE SPOT FACE CUTTER SEE BELOW

PCB87

	Order Code	1+	10+	20+	50+
	<b>451-058</b>				

## Single-Sided Stripboard



Matrix Pitch	L	W	Strips mm	Rows	Order Code
0.1"	365.8	114.3	41 1.9	144	147-899
0.2"	457.2	121.9	21 2.54	90	147-897

FOR SUITABLE SPOT FACE CUTTER SEE BELOW

PCB30

Pitch	Order Code	1+	20+	50+
0.1"	<b>147-899</b>			
0.2"	<b>147-897</b>			