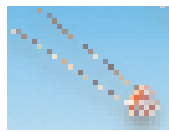


	R (Ω) Typ.	R dark (Ω) Min.	Spectral Peak (nm)	V Max.	Order Code
NSL 19M51	6K @ 10 lux	20.0 M ⁽¹⁾	550	100	316-8335
NSL 06S53	6K @ 10 lux	20.0 M ⁽¹⁾	550	100	316-8347
NSL 4962	17K @ 1 ftc	1.0 M ⁽²⁾	515	320	316-8359
NSL 4960	17K @ 1 ftc	1.0 M ⁽²⁾	515	320	316-8360
NORP 12	9K @ 10 lux	0.4 M	515	320	327-700

⁽¹⁾ after 10 seconds, ⁽²⁾ after 5 seconds

OPT666

Mfrs. List No.	Order Code	1+	25+	100+	1K+
NSL 19M51	316-8335				
NSL 06S53	316-8347				
NSL 4962	316-8359				
NSL 4960	316-8360				
NORP 12	327-700				



Cadmium sulphide photoconductive cell in epoxy coated package.

179-611
H = 2.3, Dia = 5.1, W = 4.3
Lead pitch = 3.4, Leads = 30 0.48 dia

Peak Response	Resistance 10 lux	Resistance 1000 lux	Dark Resis. (min.)	P _D (max) @30°C	V max. dc/ac (pk.)	Mfrs. List No.
550nm	20k Ω -100k Ω	500 Ω -2k Ω	20M Ω	60mW	200V	MPY54C569

OPT149

Mfrs. List No.	Order Code	1+	25+	100+	1K+
MPY54C569	.179-611				

Infra-Red Filters

Infra-red broad band acrylic filter material for use in conjunction with IR emitters in security applications etc. The filters transmit infra-red light at wavelengths greater than 750nm and are virtually opaque to visible light. Transmittance is up to a maximum of approximately 90% from 750nm to 2000nm.

One surface has a cast-in low glare finish. The material gives excellent resistance to many common chemicals and solvents. It can be easily cut down by scoring with a sharp knife, then breaking.

H	W	Thickness	Order Code
100	305	1.0	177-143
305	305	1.0	177-144

OPT56

Size	Order Code	1+	5+	10+	15+	25+
100mm 305mm	177-143					
305mm 305mm	177-144					

Solar Panels

SOLAREX

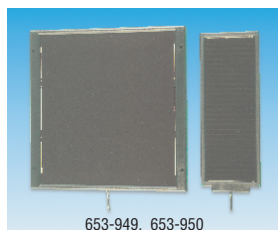
The characteristics of SOLAREX solar panels are based on measurements made at Standard Test Conditions (STC) which are – illumination of 1kW/m² at spectral distribution of AM 1.5 and a cell temperature of 25°C.

OPT327

Amorphous

SOLAREX

Solarex amorphous silicon modules are manufactured using automated processes similar to those used for semiconductor manufacturing. These processes result in a monolithic module of solar-grade glass precision layered with conductive and semiconductive films. These films are laser-scribed into individual solar cells using a patented method which produces superior voltage characteristics and overall performance at low light levels.



653-949, 653-950

Framed Amorphous Modules

- SA-1, 1.4 watt module
- SA-5, 5.1 watt module
- Impact resistant Lexan[®] frame
- 1.3m (SA-1) and 3m (SA-5) cables fitted
- Suitable for 12V battery charging

Unframed Solar Plate

- SA-0640, 0.3 watt plate
- Fitted with 150mm leads
- Suitable for 6V battery charging

Mfrs. List No.	L	W	D	Nom. Volts	Amps @ pp	Volts @ pp
SA-0640	152	55	2	6	0.040	7.5
SA-1	330	124	11	12	0.080	17.5
SA-5	346	346	21	12	0.290	17.5

OPT328

Mfrs. List No.	Order Code	1+
SA-0640	.653-937	
SA-1	.653-949	
SA-5	.653-950	

Polycrystalline

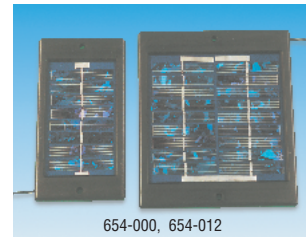
SOLAREX

The cells in Solarex polycrystalline modules are manufactured from 0.2mm thick slices of a boron doped silicon crystal block. This P-type material is sprayed on one face with phosphoric acid, passed through a diffusion oven to form an N-type layer and then given an anti-reflective coating. After the addition of conductive layers the resulting cells are connected in series and laminated between tempered glass and ethylene vinyl acetate (EVA) with a Tedlar[®] backsheets. The laminates are then fitted into bronze-anodised aluminium frames. Alternatively, glass-less, 'Lite' modules are available where the laminate is backed with a stainless steel sheet for strength and durability.

OPT329

Low Power Modules

SOLAREX



654-000, 654-012

- MSX-005F, 0.5 watt module
- MSX-01F, 1.2 watt module
- Impact resistant Lexan[®] frame
- 750mm cable fitted
- Stable output and long life

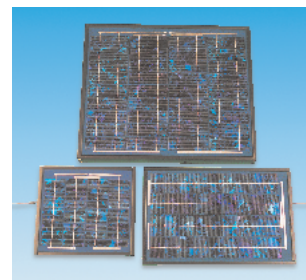
Mfrs. List No.	L	W	D	Nom. Volts	Amps @ pp	Volts @ pp
MSX-005F	147	79	10	3	0.150	3.7
MSX-01F	161	139	10	6	0.150	8.4

OPT330

Mfrs. List No.	Order Code	1+
MSX-005F	.654-000	
MSX-01F	.654-012	

Medium Power Modules

SOLAREX



- MSX-5, 4.5 watt module
- MSX-10, 10 watt module
- MSX-20, 20 watt module
- 4 metre cable fitted to MSX-5 and MSX-10
- Large junction box on MSX-20
- MSX-20 can be configured to 6V or 12V
- Bronze-anodised aluminium frame
- Tempered glass/EVA laminate construction

654-024, 654-036, 654-048

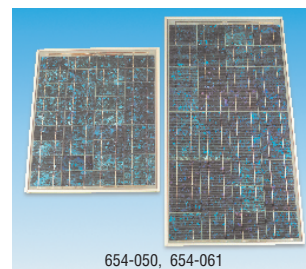
Mfrs. List No.	L	W	D	Nom. Volts	Amps @ pp	Volts @ pp
MSX-5	269	249	23	12	0.270	16.8
SSX-10M	420	269	23	12	0.580	17.1
MSX-20	423	502	50	12	1.170	17.1

OPT331

Mfrs. List No.	Order Code	1+
MSX-5	.654-024	
SSX-10M	.654-036	
MSX-20	.654-048	

Value Line Modules3

SOLAREX



654-050, 654-061

- VLX-32, 32 watt module
- VLX-53, 53 watt module
- Large junction box
- Can be configured to 6V or 12V
- Clear-anodised aluminium frame
- Tempered glass/EVA laminate construction

Mfrs. List No.	L	W	D	Nom. Volts	Amps @ pp	Volts @ pp
VLX-32	591	500	50	12	1.860	17.2
VLX-53	937	500	50	12	3.080	17.2

OPT334

Mfrs. List No.	Order Code	1+
VLX-32	.654-050	
VLX-53	.654-061	

continued