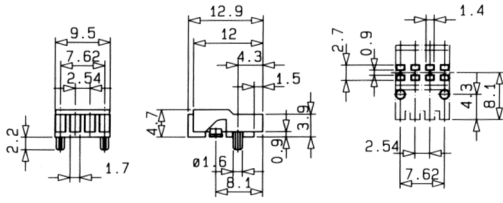


4 Way, 10 Way & 20 Way Light Pipe Bargraph Modules, Right Angle



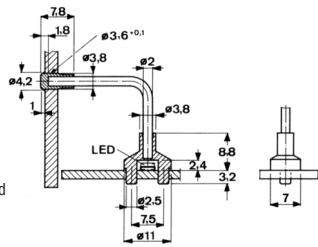
Low profile right angle light pipe bargraph for use with SMD LEDs. They are available in 4, 10 and 20 ways with 1.7 x 3.9 rectangular viewing areas. The arrays are PCB mounted by fluted pins. Temperature range: -40°C to +85°C

Mftrs. List No.	Order Code	1+	25+	100+	250+	500+
4 Way						
1278.1204	324-5275					
10 Way						
1278.1210	324-5287					
20 Way						
1278.1220	324-5299					

Flexible Light Pipes



Flexible 2mm \varnothing light pipe kit for use with SMD LEDs. 2mm \varnothing flexible section may be cold formed to min 9mm radius. PCB mounted by fluted pins. Available in 80mm and 150mm lengths with 3mm \varnothing viewing area.



OPT703c

Mftrs. List No.	Order Code	1+	25+	100+	250+	500+
80mm Light Pipe						
1216.2002	324-5305					
150mm Light Pipe						
1216.2001	324-5317					

Surface Mount Light Emitting Diodes (LEDs)

Surface Mount – 'Flip Chip'

Vertical, Right Angle and Reverse Mounting



Vertical Mount L = 2.0, W = 1.25, D = 1.1 (HSMx-H670)
 L = 1.6, W = 0.8, D = 0.9 (HSMx-H690)
 L = 3.20, W = 2.70, D = 1.1 (HSMx-C655)
 Right Angle Mount L = 2.1, W = 0.70, D = 1.30 (HSMx-Rx61), L = 3.0, W = 1.0, D = 2.0 (HSMx-C660)
 Reverse Mount L = 3.20, W = 1.25, D = 1.1

Vertical and Right Angle mounts supplied on 8mm tape, Reverse mount supplied on 7mm tape.
 Peak Inverse Voltage (PIV) = 5

Colour	View angle	Typ Lum Intensity @ 20mA (mcd)	I _f (mA) (max)	Peak Wavelength	Mftrs. List No.	Order Code
Tinted Diffused Lens - Vertical Mount						
HE Red	155°	5	20	639nm	HSMS-C670	491-949
DH AlGaAs Red	155°	16	20	650nm	HSMH-C670	491-950
Green	155°	9	20	566nm	HSMG-C670	491-962
Orange	155°	4	20	606nm	HSMC-C670	549-502
Yellow	155°	5	20	584nm	HSMY-C670	549-514
Bi-colour Untinted, Diffused Lens - Vertical Mount						
HE Red/Green	155°	5/9	25	639/566nm	HSMF-C655	491-974
Untinted Diffused Lens - Right Angle Mount						
DH AS AlGaAs Red	155°	16	25	650nm	HSMH-C660	947-994
HE Red	130°	11	30	630nm	HSMS-C110	322-9567
HE Red	165°	5	20	639nm	HSMS-R661	948-019
Red	155°	50	30	630nm	HSMC-S660	322-9555
Amber	155°	65	30	592nm	HSMA-S660	322-9543
Orange	155°	65	30	609nm	HSMC-S660	322-9592
Yellow	130°	9	30	589nm	HSMY-C110	322-9579
Yellow	165°	5	20	589nm	HSMY-R661	948-081
Green	155°	9	25	566nm	HSMG-C660	948-093
Green	130°	16	30	570nm	HSMG-C110	322-9580

Colour	View angle	Typ Lum Intensity @ 20mA (mcd)	I _f (mA) (max)	Peak Wavelength	Mftrs. List No.	Order Code
Untinted Diffused Lens - Reverse Mount						
HE Red	170°	8	25	639nm	HSMS-C260	322-9622
HE Red	165°	5	20	639nm	HSMS-H630	948-111
Orange	170°	8	25	606nm	HSMC-C260	322-9609
Yellow	170°	8	25	584nm	HSMY-C260	322-9634
Yellow	165°	5	20	584nm	HSMY-H630	948-135
Green	170°	15	25	566nm	HSMG-C260	322-9610
Green	165°	9	20	566nm	HSMG-H630	948-147
Untinted Diffused Lens, AllnGap - Vertical Mount						
Red	165°	35	20	690nm	HSMC-H670	947-970
Red	165°	50	30	630nm	HSMC-S670	322-5150
Red	165°	50	30	630nm	HSMC-S690	322-9531
Amber	165°	30	20	592nm	HSMA-H670	947-933
Amber	165°	65	30	592nm	HSMA-S670	322-5136
Amber	165°	65	30	592nm	HSMA-S690	322-5148
Orange	165°	65	30	609nm	HSMC-S670	322-9518
Orange	165°	65	30	609nm	HSMC-S690	322-9520

OPT252

Order Multiple=5

Price Each

Colour	Order Code	5+	100+	250+	500+	1K+
--------	------------	----	------	------	------	-----

Vertical Mount

HE Red	491-949
DH AlGaAs Red	491-950
Green	491-962
Orange	549-502
Yellow	549-514
HE Red/Green	491-974

Right Angle Mount

DH AS AlGaAs Red	947-994
HE Red	322-9567
HE Red	948-019
Red	322-9555
Amber	322-9543
Orange	322-9592
Yellow	322-9579
Yellow	948-081
Green	948-093
Green	322-9580

Reverse Mount

HE Red	322-9622
HE Red	948-111
Orange	322-9609
Yellow	322-9634
Yellow	948-135
Green	322-9610
Green	948-147

Vertical Mount

Red	947-970
Red	322-5150
Red	322-9531
Amber	947-933
Amber	322-5136
Amber	322-5148
Orange	322-9518
Orange	322-9520

MiniReel™

Surface Mount – 'Flip Chip' – Vertical Mounting



Agilent Technologies
Innovating the HP Way



Tape width = 8mm

- 100mm reel size
- 100 pieces on each reel
- Ideal for pre-production, prototyping and production shortfalls
- Complete with leader tape
- See above for specification details, these are MiniReel packaged versions of the 'Flip Chip' LEDs shown above



OPT727

100 Pieces Per Reel

Price Each

Colour	MiniReel List No.	Order Code	1+	3+	5+
--------	-------------------	------------	----	----	----

Tinted Diffused Lens – Vertical Mount

HE Red	HSMS-C670-MR	344-8654
DH AlGaAs Red	HSMH-C670-MR	344-8642
Green	HSMG-C670-MR	344-8629
Orange	HSMC-C670-MR	344-8605
Yellow	HSMY-C670-MR	344-8678

Untinted Diffused Lens

HE Red/Green	HSMF-C655-MR	344-8617
--------------	--------------	----------

continued