

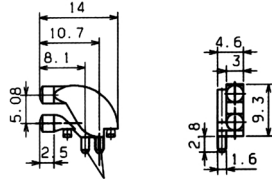
Light Pipes

Light Pipes



Positioning LEDs away from the front panel helps to reduce EMC. Light Pipes are manufactured from hi-efficiency polycarbonate, and provide designers with a simple, low cost method of transferring light from SMD LEDs to the front panel with minimal loss of light intensity. This new range gives various options for positioning the light and offers a number of combinations of either single or multiple light pipes giving vertical, right angled or flexible light output.

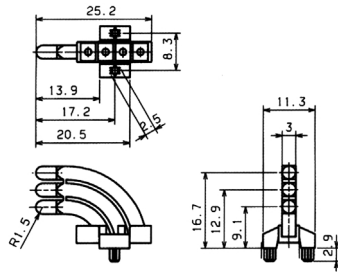
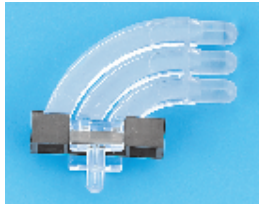
Dual, Curved 90°



Dual vertical-stacked, 90° ∅ 3mm, PCB mounted by 2 fluted pins. Temperature range = -40°C to +85°C

Mfrs. List No.	Order Code	1+	25+	100+	250+	500+
1280.1210	324-5111					

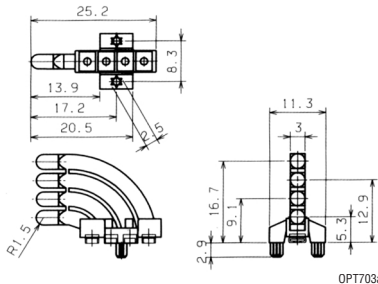
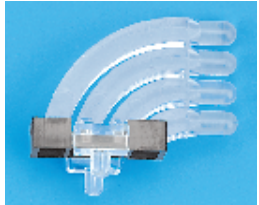
Triple, Curved 90°



Triple vertical-stacked, 90° ∅ 3mm, PCB mounted by 2 fluted pins. Temperature range = -40°C to +85°C

Mfrs. List No.	Order Code	1+	25+	100+	250+	500+
1276.1203	324-5123					

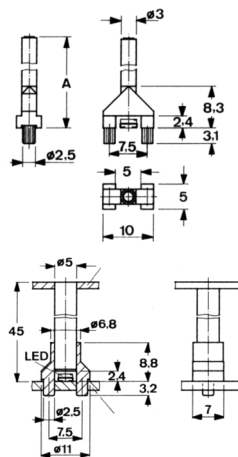
Quad, Curved 90°



Quad vertical-stacked, 90° ∅ 3mm, PCB mounted by 2 fluted pins. Temperature range = -40°C to +85°C

Mfrs. List No.	Order Code	1+	25+	100+	250+	500+
1276.1204	324-5135					

Single, Vertical

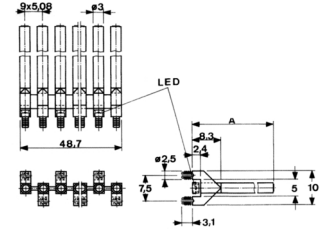


A = 15mm 1275.1201, 30mm 1275.1202, 45mm 1275.1203

Single straight vertical-stacked, ∅ 3 & 5mm, PCB mounted by 2 fluted pins. Available in 15mm, 30mm and 45mm lengths. Temperature range = -40°C to +85°C

Mfrs. Length	List No.	Order Code	1+	25+	100+	250+	500+
3mm Diameter							
15mm	1275.1201	324-5147					
30mm	1275.1202	324-5159					
45mm	1275.1203	324-5160					
5mm Diameter							
45mm	1216.2005	324-5172					

10 Way Light Pipe Module, Vertical

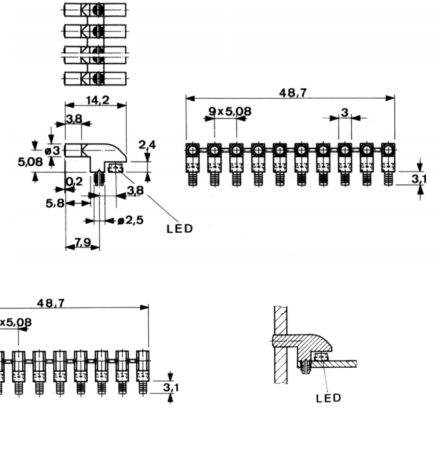


A = 15mm 127.1210/1274.1210, 30mm 1272.1220/1274.1220, 45mm 1272.1230/1274.1230

10 way light pipe module straight vertical-stacked, available in ∅ 3mm & 2.0 x 5.0mm rectangular format with lengths of 15mm, 30mm and 45mm. PCB mounted by 10 fluted pins. Temperature range = -40°C to +85°

Mfrs. Length	List No.	Order Code	1+	25+	100+	250+	500+
3mm Diameter							
15mm	1272.1210	324-5184					
30mm	1272.1220	324-5196					
45mm	1272.1230	324-5202					
2mm x 5mm Rectangular							
15mm	1274.1210	324-5214					
30mm	1274.1220	324-5226					
45mm	1274.1230	324-5238					

10 Way & 20 Way Light Pipe Module, Right Angle



90° light pipe arrays for use with SMD LEDs. The 20 way units are a dual tier format and the 10 way units are single tier. The 20 way dual tier is available in 3mm ∅ round section while the 10 way single tier modules are available in 3mm ∅ and 2mm x 5mm rectangular. PCB mounted by 10 fluted pins. Temperature range = -40°C to +85°C

Mfrs. List No.	Order Code	1+	25+	100+	250+	500+
10 Way Single Tier 2mm x 5mm Rectangular						
1273.1210	324-5240					
10 Way Single Tier 3mm Diameter						
1271.1210	324-5251					
20 Way Dual Tier 3mm Diameter						
1270.1210	324-5263					