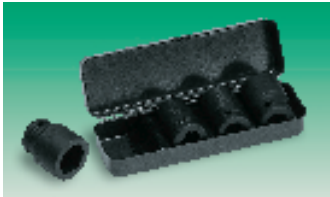


HAT63

Model	Order Code	1+	4+	10+	20+	40+
7819HNR	708-7147					
7819DMRN	708-7159					
7819DME	708-7160					
7888DM	708-7184					
7886DZ	708-7202					
7886DZE	708-7214					

Impact Socket Set 1/2"



- Professional impact socket set 1/2" drive
- Impact tools forged for impact spanners and power drivers
- Ultra-resistant tools for the most demanding tasks and safe operations
- Supplied in a metal box containing sizes 17, 19, 22 and 24mm
- Chrome vanadium extra finish
- Conforms to **DIN 3121-G 12.5** and **ISO 1174**



HAT61

Mfrs. List No.	Order Code	1+	4+	10+	20+	40+
K7801VM/S4	708-5631					

15 Piece Deep Wall Impact Socket Set 6WD



Mettrinch

New

6WD Socket



- Professional impact socket set 1/2" drive 15 piece metric/imperial set
- Mettrinch 6 wall drive profile
- Chrome vanadium steel, epoxy coated
- Supplied in a heavy duty steel case

Metrich is a trademark of Surelab, USA

	Metric	Size	Imperial
15 Piece	11,12,13,14,15,16,17,18,19,20,21,22,23,24,25		7/16, 19/32, 1/2, 5/16, 19/32, 3/8, 11/16, 23/32, 3/4, 29/32, 13/16, 7/8, 29/32, 15/16, 1"

TMM374

Order Code	1+	5+	10+
321-6937			

40 Piece Torx Set TX-Star

DURATOOL

New



- Super TX-Star offset wrenches, sockets and 1/4", 3/8", 1/2" Square Drive socket bit holders complete in a metal case
- Sockets are chrome vanadium steel, hardened and tempered with a chrome plated finish
- Inserts are hardened and tempered, with a matt finish

Contents:

Offset wrenches	T9, T10, T15, T20, T25, T27, T30, T40, T45, T50, T55, T60, T70
1/4" Drive sockets	E4, E5, E6, E7, E8
3/8" Drive sockets	E10, E12, E14, E16, E18, E20
Bit holders	6mm Hex 1/4" Drive, 10mm Hex 3/8" Drive, 14mm Hex 1/2" Drive
6mm Hex bits	T9, T10, T15, T20
10mm Hex bits	T25, T27, T30, T40, T45, T50
14mm Hex bits	T55, T60, T70

TEE420

Order Code	1+	5+	10+
312-7242			

3/4" Drive 26 Piece Silverdrive



- Carbon steel, hardened and tempered
- Chrome-plated for corrosion protection
- Supplied in blow-moulded carrying case

Contents:
11 x 12 point sockets size: 22, 24, 26, 27, 30, 32, 33, 36, 38, 41 and 46mm
10 x 12 point sockets size: 3/16", 1/4", 5/16", 3/8", 7/16", 1/2", 5/8" and 3/4" AF
Reversible ratchet 3 extension bars sizes: 100, 150 and 200mm
Sliding T bar

HAT21

Mfrs. List No.	Order Code	1+	4+	10+	20+	40+
22409	707-8419					

Torque Tools

Pre-Set Torque Screwdrivers



LINDSTROM introduce a torque-limiting screwdriver that can be pre-set to the precise torque required for your application. Four models are offered that cover a torque range of 4 Ncm to 450 Ncm with an accuracy of +/-6%

New

- Torque selections are easy to set
- Stainless steel 1/4" Hex driver allows use of all standard drive bits (Phillips, Torx, etc.)
- Cam-over torque limiting clutch for precision and long service life
- Spring-loaded high-security bit holder for convenience and safety
- Light in weight yet rugged in construction for years of use.
- Comfortable shape with non-slip grip
- ESD safe
- Supplied in protective and reusable packaging

Mfrs. List No.	Torque Range (Ncm)	Weight	Length
PS501-1	4-22	190g	45mm
PS501-2	7-70	237g	55mm
PS501-3	15-170	237g	55mm
PS501-4	45-450	237g	55mm

HAT573

Range (Ncm)	Mfrs. List No.	Order Code	1+	5+	10+
4-22	PS501-1	352-4176			
7-70	PS501-2	352-4188			
15-170	PS501-3	352-4190			
45-450	PS501-4	352-4206			

continued

Free Same Day Delivery

For orders received before 12.30pm we provide free same day delivery.