

Universal Joint 1/4"



- Universal joint for 1/4" sockets
- Hinge-jointed in the middle
- Chrome vanadium extra finish
- Conforms to **DIN3120** and **ISO 1174**



HAT38

Mftrs. List No.	Order Code	1+	4+	10+	20+	40+
6966	707-9450					

Adaptor 1/4"



- Converts 3/8" drive sockets into 1/4" drive
- Chrome vanadium extra finish
- Conforms to **DIN 3120** and **ISO 1174**

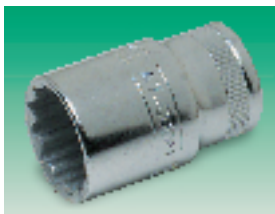


HAT42

Mftrs. List No.	Order Code	1+	4+	10+	20+	40+
7765	707-9461					

Sockets 3/8" Drive

Double Hexagon Socket 3/8"



- High-quality metric and Imperial sockets
- High performance
- Thin walled for access in limited space
- Dynamic drive profile
- Chrome vanadium extra finish
- Conforms to **DIN 3124** and **ISO 2725**



HAT37

Size	Mftrs. List No.	Order Code	1+	4+	10+	20+	40+
Metric							
9	A7400DM-9	707-9898					
10	A7400DM-10	707-9904					
11	A7400DM-11	707-9916					
12	A7400DM-12	707-9928					
13	A7400DM-13	707-9930					
14	A7400DM-14	707-9941					
15	A7400DM-15	707-9953					
16	A7400DM-16	707-9965					
17	A7400DM-17	707-9977					
18	A7400DM-18	707-9989					
19	A7400DM-19	707-9990					
20	A7400DM-20	708-0001					
21	A7400DM-21	708-0013					
Imperial							
3/8	A7400DZ-3/8	708-0025					
7/16	A7400DZ-7/16	708-0037					
1/2	A7400DZ-1/2	708-0049					
11/32	A7400DZ-11/32	708-0050					
3/16	A7400DZ-3/16	708-0062					
1/32	A7400DZ-1/32	708-0074					
5/16	A7400DZ-5/16	708-0086					
1/4	A7400DZ-1/4	708-0098					
3/8	A7400DZ-3/8	708-0104					
1/2	A7400DZ-1/2	708-0116					
3/4	A7400DZ-3/4	708-0128					

Reversible Ratchet 3/8"



10.5° ratchet
6° ratchet

- **7750** Reversible ratchet 3/8" drive with plastic handle, 32 teeth and a 10.5° action with a forward/reverse lever on the head
- **7750RN** Reversible ratchet 3/8" drive with plastic handle, close quarter 60 fine teeth and a 6° action with a fast forward/reverse knurled lever on the head



- Chrome vanadium extra chrome finish
- Conforms to **DIN 3120** and **ISO 1174**

Mftrs. List No.	Order Code	1+	4+	10+	20+	40+
7750	708-0130					
7750RN	708-0141					

Breaker Bar 3/8"



- High-quality breaker bar for 3/8" drive sockets with plastic handle
- Hinge-jointed head
- Chrome vanadium extra finish
- Conform to **DIN 120** and **ISO 1174**



Mftrs. List No.	Order Code	1+	4+	10+	20+	40+
7758	708-0517					

Speeder 3/8"

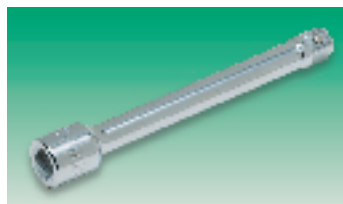


- High-quality speeder for 3/8" sockets 4335mm long
- Chrome vanadium extra finish
- Conform to **DIN 3120** and **ISO 1174**



Mftrs. List No.	Order Code	1+	4+	10+	20+	40+
7752	708-0542					

Extension Bar 3/8"



- High-quality extension bars 3/8", from 75mm to 300mm
- Chrome vanadium extra finish
- Conform to **DIN 3120** and **ISO 1174**



Length	Mftrs. List No.	Order Code	1+	4+	10+	20+	40+
75	7760	708-0578					
125	7761	708-0580					
250	7762	708-0591					

Universal Joint 3/8"



- Hinge-jointed in the middle
- Chrome vanadium extra finish
- Conform to **DIN 3120** and **ISO 11743**



Mftrs. List No.	Order Code	1+	4+	10+	20+	40+
7766	708-0220					

Ratchet Adaptor 3/8"



- High-quality ratchet adaptor for 3/8" drive sockets
- Close-quarter 60 tooth and 6° action
- Chrome vanadium extra finish
- Conform to **DIN 3120** and **ISO 1174**



Mftrs. List No.	Order Code	1+	4+	10+	20+	40+
7751	708-0414					

continued