

Reed Relays — continued

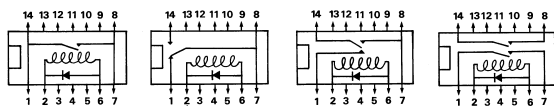
Dry Reed, DIL – 120/130 Series



L = 19,
W = 6.6,
H = 7.

Top Views

- Available with 8 or 14 pins in a standard 14 pin DIN package
- Diode protection



SPNO

SPCO (28V)

SPCO (100V)

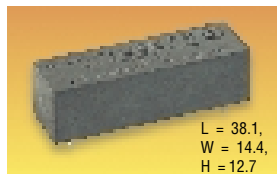
DPNOu

	SPNO	SPCO (28V) (Form A)	SPCO (100V) (Form C)	DPNO (2 Form A)	
Switch voltage (max)	100V dc	28V dc	100V dc	28V dc	
Switch current (max)	0.50A	0.25A	0.20A	0.11A	
Switch power (max)	10W	3W	4W	3W	
Contact resistance (max)	0.1 Ω	0.15 Ω	0.15 Ω	0.2 Ω	
Operate/Release	0.25/0.15ms	0.5/1.3ms	0.5/1.3ms	0.25/0.15ms	
Insulation resistance	10 $^9\Omega$	10 $^9\Omega$	10 $^9\Omega$	10 $^9\Omega$	
Mfrs. List No.	Order Code	Mfrs. List No.	Order Code	Mfrs. List No.	Order Code
121A4	330-980	131A4	331-030	131C6	331-077
121C2	330-991	131A6	331-041	135C2	331-089
125C2	331-004	131C2	331-053	132A2	331-107
122A2	331-016	131C4	331-065	132A4	331-119

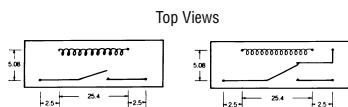
REL003

COIL		Price Each						
V dc	Ω	Pins	Order Code	1+	25+	100+	250+	500+
SPNO								
3.7-7.5	500	14	330-980					
3.7-7.5	500	8	331-030					
12-24	2900	8	331-041					
SPCO — 28V								
3.7-7.5	80	14	330-991					
3.7-7.5	80	8	331-053					
9.0-18	450	8	331-065					
18-36	1750	8	331-077					
SPCO-100V								
3.7-7.5	150	14	331-004					
3.7-7.5	150	8	331-089					
DPNO								
3.7-7.5	200	14	331-016					
3.7-7.5	200	8	331-107					
9-18	500	8	331-119					

Dry Reed, Nylon Case – CPR/CCPR Series



L = 38.1,
W = 14.4,
H = 12.7



SPNO

SPCO

- Housed in epoxy filled nylon case
- Suitable for PCB mounting on 0.1" grid

	SPNO (Form A)	SPCO (Form C)			
Switch voltage (max)	200V dc	200V dc			
Switch current (max)	0.5A	0.25A			
Switch power (max)	10W	3W			
Hold off voltage (min)	250V	200V			
Contact resistance (max)	0.15 Ω	0.15 Ω			
Operate/Release	1mS/0.5ms	1mS/0.5ms			
Insulation resistance	10 $^9\Omega$	10 $^9\Omega$			
Mfrs. List No.	Order Code	Mfrs. List No.	Order Code	Mfrs. List No.	Order Code
CPR1J	103-592	CPR1B	103-595	CCPR1G	103-598
CPR1D	103-593	CPR1A	103-596		
CPR1C	103-594	CCPR1J	103-597		

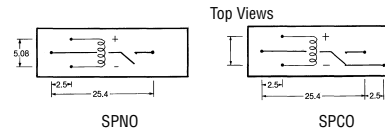
REL001

COIL		Price Each					
Vdc	$\Omega \pm 10\%$	Order Code	1+	25+	50+	100+	250+
SPNO							
5	1000	103-592					
6-9	700	103-593					
9-12	1000	103-594					
12-18	1700	103-595					
18-30	3000	103-596					
SPCO							
5	1000	103-597					
9-12	1000	103-598					

Dry Reed, Screened Case – HE221A/C Series



L = 32, W = 10, H = 9.5



SPNO

SPCO

- Encapsulated in a nickel-plated steel case to provide magnetic screening
- Suitable for PCB mounting on 0.1" grid.

	SPNO (Form A)	SPCO (Form C)	
Switch voltage (max)	200V dc	200V dc	
Switch current (max)	0.75A	0.25A	
Switch power (max)	10W	3W	
Hold off voltage (min)	250V	250V	
Contact resistance (max)	0.15 Ω	0.20 Ω	
Operate/Release	0.5mS	3mS	
Insulation resistance	10 $^9\Omega$	10 $^9\Omega$	
Mfrs. List No.	Order Code	Mfrs. List No.	Order Code
(xx = nom. voltage, 5, 12, 24 or 48V)	HE221Axx90	HE221Cxx90	

REL002

COIL		Price Each					
V dc	$\Omega \pm 10\%$	Order Code	1+	25+	50+	100+	250+
SPNO							
3.50-17	345	170-849					
8.40-40	2145	170-850					
16.8-80	7845	170-851					
SPCO							
3.50-11	140	170-856					
8.40-27	855	170-857					
16.8-54	3285	170-858					

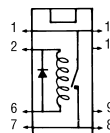
Mercury Wetted Contacts, DIL

C.P. CLARE

MSS2 Series



SPNO (Form A)
L = 19.6, W = 7, H = 7.3
Top View Mount
Vertically as shown



Switch voltage (max)	350Vdc/ac (pk)	Contact resistance (max)	0.10 Ω
Switch current (max)	0.75A dc/ac (pk)	Operate/Release (max)	1.75ms/1.50ms
Carry current (max)	2.0A dc/ac (pk)	Insulation resistance	10 $^9\Omega$
Switch power (max)	30W (50W @ <5Hz)		

WARNING: THESE RELAYS SHOULD NOT BE OPENED AS THEY CONTAIN MERCURY, A TOXIC SUBSTANCE.

Mfrs. List No. MSS21A05B = 678-478, MSS21A12B = 678-480, MSS21A24B = 678-491B

ref193

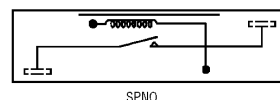
COIL		Price Each						
Vdc	$\Omega \pm 10\%$	Order Code	1+	25+	100+	250+	500+	1K
3.75-11	140	678-478						
9.00-21	500	678-480						
18.0-43	2150	678-491						

High Voltage - HVK1/2 Series

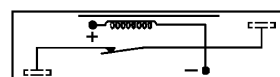


L = 50.8 W = 17 H = 19

Erg Components



SPNO



SPNC