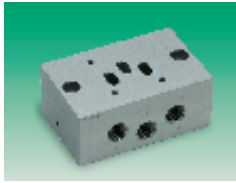


ISO Star Valves — continued

Sub Base (ISO)
Slow Start



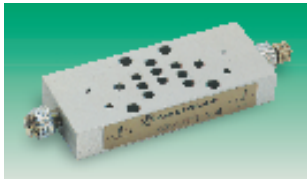
- For use with slow start valves

Slow Start Manifold

pne269

Type	Mfrs. List No.	Order Code	1+	4+	10+	20+	50+
ISO 1	FP8320	706-6065					
ISO 2	FP8420	706-6077					
ISO 3	FP8520	706-6089					

ISO Sandwich Plate Flow Regulator



- Sandwich flow regulator for controlling cylinder speed from the valve
- Available for ISO 1, 2, and 3 models
- Sandwich between valve and sub-base

Sandwich Plate Flow Regulator

pne267

Type	Mfrs. List No.	Order Code	1+	4+	10+	20+	50+
ISO 1	CQM/22152/3/26	706-5899					
ISO 2	CQM/22253/3/26	706-5905					
ISO 3	CQM/22354/3/26	706-5917					

Valve Accessories

Exhaust Silencer



- Reduces noise levels from pneumatic equipment
- Screws into the exhaust port
- Prevents the ingress of dirt
- Maximum pressure 10 bar

Size (")	Noise level at 6bar dB(A)
1/8	75
1/4	78
3/8	84
1/2	88
3/4	96
1	100

Noise level measured at 1m

Sintered Bronze Silencers

pne64

Thread	Mfrs. List No.	Order Code	1+	4+	10+	50+	100+
1/8	T40B1800	701-0564					
1/4	T40B2800	701-0576					
3/8	T40B3800	701-0588					
1/2	T40B4800	701-0590					
3/4	T40B6800	706-9625					
1	T40B8800	706-9637					

Uni-Directional Flow Regulators



- Line mounted general-purpose regulators
- Captive regulating needle will not blow out when unscrewed
- Calibrated adjusting knob, can be locked
- Suitable for wall mounting
- High operating pressures

Medium	Compressed air, filtered, lubricated and non-lubricated
Operation	Uni-directional
Mounting	Line mounted
Port Sizes (")	1/8, 1/4, 1/2, 3/4 & 1
Operating Pressure	0.3 to 17 bar
Operating Temperature	-20° C to +80° C

Flow Regulators

pne270

Port BSPP (")	Mfrs. List No.	Order Code	1+	4+	10+	20+	50+
1/8	S/836	706-6326					
1/4	M/837	706-6338					
1/2	M/839	706-6340					
3/4	M/840	706-6351					
1	M/855	706-6363					

Exhaust Flow Regulator/Silencer



- Compact, integral flow regulator and silencer units
- Captive regulating needle will not blow out when unscrewed
- Reduced dimensions
- Screw into valve exhaust ports for silencing and flow regulation

Medium	Compressed air, filtered, lubricated and non lubricated
Mounting	Directly in the exhaust port Hexagon key adjustment for flow regulation
Operating Pressure	0 to 10 bar
Operating Temperature	-20° C to +80° C

Exhaust Flow Regulator/Silencer

pne271

Thread (")	Mfrs. List No.	Order Code	1+	4+	10+	20+
1/8	T20C1800	706-6430				
1/4	T20C2800	706-6442				
3/8	T20C3800	706-6454				
1/2	T20C4800	706-6466				

Non-Return Push-in Fitting



- Push-in design
- Allow free flow in one direction only
- Simple, reliable design
- Low weight
- Low cracking pressure
- High operating pressure

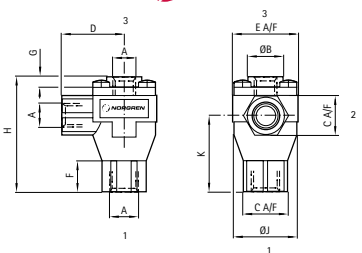
Medium	Compressed air, filtered, lubricated and non lubricated, vacuum
Operation	Non-Return Valve
Operating Pressure	-0.9 to 16 bar
Cracking Pressure	0.03 bar
Operating Temperature	-20° C to +80° C
Mounting	Line mounted, push-in connection

Push-in Non Return Valves

pne274

O/D Tube mm	Mfrs. List No.	Order Code	1+	4+	10+	20+	50+
4	T50P0004	706-6636					
6	T50P0006	706-6648					
8	T50P0008	706-6650					
10	T50P0010	706-6661					
12	T50P0012	706-6673					

Quick Exhaust Valve



Quick Exhaust Valves

Model	T70C1800	T70C2800	T70C3800	T70C4800
A	G 1/8	G 1/4	G 3/8	G 1/2
∅B	19	19	30	30
C A/F	19	19	30	30
D	28	28	40	40
E A/F	30	30	46	46
F	15.3	15.3	15.5	15.5
G	3.5	3.5	4	4
H	53	53	73.5	73.5
∅J	29	29	46	46
K	35.5	35.5	48	48

- Enables air to be exhausted quickly from air reservoirs and cylinders
- Allows higher cylinder speeds to be achieved
- Simple, compact design and construction
- Very reliable in operation