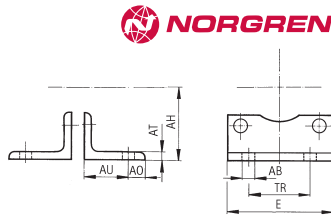


VDMA Foot Mounting



VDMA Foot Mount



- VDMA cylinder foot mounting provide secure fixing
- Foot mounts are supplied as a pair

Bore \varnothing	32	40	50	63	80	100
\varnothing AB	7	9	9	9	12	14
AH	32	36	45	50	63	71
A0	8	9	10	12	19	19
AT	5	5	5	5	5	5
AU	24	28	32	32	41	45
E	48	53	63	73	98	115
TR	32	36	45	50	63	75

pne408

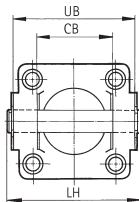
To suit cylinder bore

Mftrs. List No.	Order Code	Price Each				
		1+	4+	10+	20+	50+
20 QM/192020/21	327-5401					
25 QM/192025/21	327-5413					
32 QA/8032/21	712-2690					
40 QA/8040/21	712-2706					
50 QA/8050/21	712-2718					
63 QA/8063/21	712-2720					
80 QA/8080/21	712-2731					
100 QA/8100/21	712-2743					
125 QM/8125/21	327-5425					

Rear Clevis

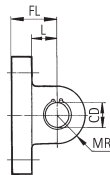


Rear Clevis Mount



- VDMA rear clevis provides secure fixing whilst allowing lateral movement

\varnothing Bore	32	40	50	63	80	100
CB	26	28	32	40	50	60
\varnothing CD	10	12	12	16	16	20
FL	22	25	27	32	36	41
L	13	16	17	22	22	27
LH	52	60	68	79	99	119
MR	9	12	12	15	15	20
UB	45	52	60	70	90	110



pne409

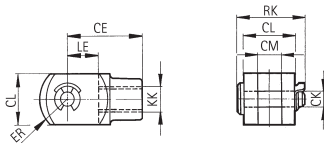
To suit cylinder bore

Mftrs. List No.	Order Code	Price Each				
		1+	4+	10+	20+	50+
32 QA/8032/23	712-2810					
40 QA/8040/23	712-2822					
50 QA/8050/23	712-2834					
63 QA/8063/23	712-2846					
80 QA/8080/23	712-2858					
100 QA/8100/23	712-2860					
125 QA/8125/23	327-5437					

Piston Rod Clevis



Piston Rod Clevis



- Provides secure fixing of the piston rod to the load
- To select, cross-refer to the bore of the VDMA cylinder

Thread KK	M10 1.25	M12 1.25	M16 1.25	M20 1.25	M27 2
CE	40	48	64	80	110
\varnothing CK	10	12	16	20	30
CL	20	24	32	40	55
CM	10	12	16	20	30
ER	16	19	25	32	45
LE	20	24	32	40	54
RK	28	32	41.5	50	62

pne410

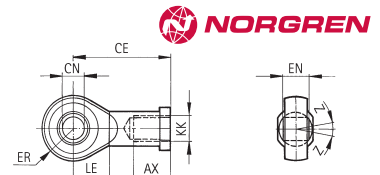
To suit cylinder bore

Piston Rod Thread	Mftrs. List No.	Order Code	Price Each			
			1+	4+	10+	20+
32 M10 1.25	QM/13032/25	712-2950				
40 M12 1.25	QM/13040/25	712-2962				
50, 63 M16 1.5	QM/13063/25	712-2986				
80, 100 M20 1.5	QM/13100/25	712-3000				
125 M27 2	QM/8125/25	327-5516				

Universal Piston Rod Eye



Universal Piston Rod Eye



- Provides secure fixing of the piston rod to the load
- Allows for radial misalignment (up to 15°) and lateral movement
- To select, cross-refer to the bore of the VDMA cylinder

Thread KK	M10 1.25	M12 1.25	M16 1.25	M20 1.25	M27 2
AX	20	22	28	33	51
CE	43	50	64	77	110
\varnothing CN	10	12	16	20	30
EN	14	16	21	25	37
ER	14	16	21	25	35
LE	15	17	22	26	36
Z	13°	13°	15°	15°	15°

pne411

To suit cylinder bore

Piston Rod Thread	Mftrs. List No.	Order Code	Price Each			
			1+	4+	10+	20+
32 M10 x 1.25	QM/8025/32	700-0583				
40 M12 x 1.25	QM/8040/32	712-3206				
50, 63 M16 x 1.5	QM/8050/32	712-3218				
80, 100 M20 x 1.5	QM/8080/32	712-3220				
125 M27 2	QM/8125/32	327-5528				

Mountings for VDMA/ISO Cylinders Stainless Steel rear Clevis Type D



Mftrs. List No.	Piston \varnothing	Order Code
KQA 8032 23	32	724-7473
KQA 8040 23	40	724-7485
KQA 8050 23	50	724-7497
KQA 8063 23	63	724-7503
KQA 8080 23	80	724-7515
KQA 8100 23	100	724-7527

pne553

Order Code	Price Each			
	1+	4+	10+	20+
724-7473				
724-7485				
724-7497				
724-7503				
724-7515				
724-7527				

Mountings for VDMA/ISO Cylinders Stainless Steel Rear Clevis Type F



Mftrs. List No.	Piston \varnothing	Order Code
KQM 55433 25	32	724-7539
KQM 55441 25	40	724-7540
KQM 55451 25	50	724-7552
KQM 8080 25	80	724-7564

pne554

Order Code	Price Each			
	1+	4+	10+	20+
724-7539				
724-7540				
724-7552				
724-7564				