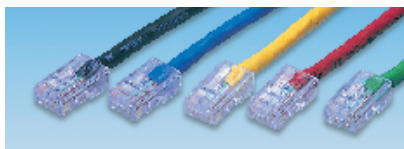


Ethernet Cable (Twisted Pair) — continued

Coloured Patch Leads (UTP) (Category 5)



- Quick and easy cable identification
- BS approved Category 5 cable
- Wired in accordance with 258A specification
- High quality Stewart connectors (RJ45)
- UK manufactured
- Enables easy identification of individual cables at a glance within any structured wiring network
- Fitted with 8 way RJ45 connectors at each end

NET176

	Order Code	Price Each		
		1+	10+	50+
0.5 Metre				
UTP Patch Lead-Beige	130-151			
UTP Patch Lead-Red	130-199			
UTP Patch Lead-Green	130-205			
UTP Patch Lead-Blue	130-217			
UTP Patch Lead-Yellow	130-229			
UTP Patch Lead-Black	130-230			
1 Metre				
UTP Patch Lead-Beige	480-071			
UTP Patch Lead-Red	647-925			
UTP Patch Lead-Blue	647-937			
UTP Patch Lead-Green	647-949			
UTP Patch Lead-Yellow	647-950			
UTP Patch Lead-Black	647-962			
2 Metre				
UTP Patch Lead-Beige	480-083			
UTP Patch Lead-Red	647-974			
UTP Patch Lead-Blue	647-986			
UTP Patch Lead-Green	647-998			
UTP Patch Lead-Yellow	648-000			
UTP Patch Lead-Black	648-012			
3 Metre				
UTP Patch Lead-Beige	480-095			
UTP Patch Lead-Red	992-938			
UTP Patch Lead-Blue	992-940			
UTP Patch Lead-Green	992-951			
UTP Patch Lead-Yellow	992-963			
UTP Patch Lead-Black	992-975			
5 Metre				
UTP Patch Lead-Beige	480-101			
UTP Patch Lead-Red	992-987			
UTP Patch Lead-Blue	992-999			
UTP Patch Lead-Green	993-001			
UTP Patch Lead-Yellow	993-013			
UTP Patch Lead-Black	993-025			
10 Metre				
UTP Patch Lead-Beige	480-113			
UTP Patch Lead-Red	993-037			
UTP Patch Lead-Blue	993-049			
UTP Patch Lead-Green	993-050			
UTP Patch Lead-Yellow	993-062			
UTP Patch Lead-Black	993-074			
15 Metre				
UTP Patch Lead-Beige	130-163			
25 Metre				
UTP Patch Lead-Beige	130-175			
50 Metre				
UTP Patch Lead-Beige	130-187			

Patch Leads, Coiled Cord



- A range of coiled plug to plug leads suitable for replacement handset cords on telephones (4 way) or general leads for eliminating any unwanted trailing cable.

NET114

Approx. Extended Length	Colour	Order Code	Price Each				
			1+	25+	50+	100+	250+
4 Way							
6ft.	Ivory	106-312					
6ft.	Black	106-313					
12ft.	Ivory	107-207					
12ft.	Black	107-208					
6 Way							
10ft.	Black	107-212					
20ft.	Black	107-213					
8 Way							
10ft.	Black	107-214					
20ft.	Black	107-215					

Patch Cables - Shielded Twisted Pair (STP)



- Approved Cat. 5 STP manufactured cable
- Wired in accordance with 258A specifications
- Fitted with moulded high quality strain relief boots
- Fully tested
- Fitted with an 8 way shielded RJ45 connector at each end

NET702

	Order Code	Price Each		
		1+	10+	50+
1m STP Patch Lead - Beige	977-305			
1m STP Patch Lead - Red	300-7250			
1m STP Patch Lead - Green	300-7261			
1m STP Patch Lead - Blue	300-7273			
1m STP Patch Lead - Yellow	300-7285			
1m STP Patch Lead - Black	300-7297			
2m STP Patch Lead - Beige	977-317			
2m STP Patch Lead - Red	300-7303			
2m STP Patch Lead - Green	300-7315			
2m STP Patch Lead - Blue	300-7327			
2m STP Patch Lead - Yellow	300-7339			
2m STP Patch Lead - Black	300-7340			
1m STP Patch Lead - Beige	977-329			
3m STP Patch Lead - Red	300-7352			
3m STP Patch Lead - Green	300-7364			
3m STP Patch Lead - Blue	300-7376			
3m STP Patch Lead - Yellow	300-7388			
3m STP Patch Lead - Black	300-7390			
5m STP Patch Lead - Beige	977-330			
5m STP Patch Lead - Red	300-7406			
5m STP Patch Lead - Green	300-7418			
5m STP Patch Lead - Blue	300-7420			
5m STP Patch Lead - Yellow	300-7431			
5m STP Patch Lead - Black	300-7443			

Miscellaneous, RJ45 UTP (Cat 5)



- BS approved CAT 5 British manufacture cable
- High quality Stewart/AMP connectors
- Wired in accordance with 258A specification
- Unshielded Twisted Pair (UTP) patch leads using 4 pair level 5 fitted with 8 way RJ45 connectors at each end

NET148

Length	Order Code	Price Each		
		1+	10+	50+
Cross-wired - For Hub to Hub Connection				
0.5 metre	916-201			
1 metre	916-213			
2 metre	916-225			
3 metre	916-237			
5 metre	325-1287			
10 metre	325-1299			
15 metre	325-1305			
Patch Lead Extensions, RJ45 (Cat 5)				
1 metre	130-266			
2 metre	130-278			
5 metre	130-280			
10 metre	130-291			
Patch Couplers, RJ45 (Cat 5)				
Cat 5 UTP	130-308			
Cat 5 UTP	130-310			