

Anti-clockwise - 82 Series		Price Each		
Order Code		1+	3+	10+
<b>RPM</b>				
60	309-1314			
30	309-1260			
24	309-1272			
20	309-1284			
15	309-1296			
12	313-4921			
10	313-4933			
7.5	313-4945			
6	309-1387			
5	309-1399			
4	309-1466			
3	309-1478			
2	309-4236			
1	309-4200			
0.5	309-4212			
0.33	309-4224			
<b>Clockwise - 82 Series</b>				
60	309-1247			
30	309-1326			
24	313-4957			
20	309-1338			
15	309-1340			
12	309-1363			
10	309-1430			
7.5	313-4969			
6	309-1454			
5	313-4970			
4	309-1405			
3	309-1417			
2	309-4170			
1	309-4250			
0.5	313-4982			
0.33	309-4261			
<b>Anticlockwise - 80 Series</b>				
24	309-0425			
14.4	309-0450			
4.8	309-0462			
2.4	309-0486			
1.2	309-0516			
0.24	309-0530			
<b>Clockwise - 80 Series</b>				
24	309-0437			
14.4	309-0449			
4.8	309-0474			
2.4	309-0498			
1.2	309-0504			
0.24	309-0528			

		Price Each		
Mftrs. List No.	Order Code	1+	3+	10+
<b>Series 82.524.0</b>				
82 524 001	309-4273			
82 524 002	309-4285			
82 524 003	309-4297			
82 524 004	309-4303			
82 524 005	309-4315			
82 524 006	309-4327			
82 524 008	309-4339			
82 524 010	309-4340			
82 524 011	309-4352			
82 524 013	309-4364			
82 524 014	309-4376			
82 524 016	309-4388			
82 524 019	309-4390			
82 524 021	309-4406			
<b>Series 80.547.0</b>				
80 547 015	309-0541			
80 547 016	309-1077			
80 547 017	309-1089			
80 547 018	309-1090			
80 547 019	309-1107			
80 547 020	309-1119			
80 547 021	309-1120			
80 547 024	309-1132			

### Accessories for synchronous bidirectional motors

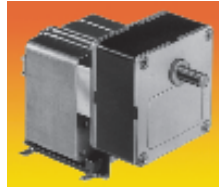
Capacitor for motor 82.524.0 Mftrs. List No.: 26 231 941  
 Capacitor for motor 80.547.0 Mftrs. List No.: 26 231 909

MOT195

		Price Each		
Mftrs. List No.	Order Code	1+	3+	10+
26 231 941	309-4418			
26 231 909	309-1144			

## Heavy Duty AC Motors

### Asynchronous geared motor, one direction



- Speed from 5.2 to 62 rpm
- Power rating 9W
- **UL, CSA, VDE** approval, complies with CEI standards



Nom. Voltage 230V, 50Hz  
 Max Torque 5 Nm clockwise

MOT196

Speed (RPM)	Order Code	Price Each		
		1+	3+	10+
62	309-4467			
31	309-4479			
10.4	309-4480			
5.2	309-4492			

### Synchronous geared motor Bidirectional with capacitor



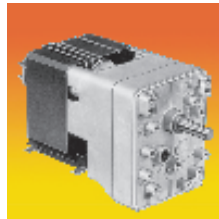
- Constant speed according to the power supply frequency
- Wide range of ratios
- Direction of rotation controlled by a phase shift capacitor
- Rotor with permanent magnet

Types	82 524 0		
Motor nom. Speed (rpm)	250		
	Rotational Speed (rpm)	Ratio	Mftrs. List No.
250 rpm	375 rpm	(i)	
25	37.5	10	82 524 001
20	30	25/2	82 524 002
12.50	18.75	20	82 524 003
10	15	25	82 524 004
8.33	12.5	30	82 524 005
6.25	9.37	40	82 524 006
5.00	7.50	50	82 524 008
4	6	125/2	82 524 010
3.13	4.68	80	82 524 011
2.08	3.12	120	82 524 013
1.67	2.5	150	82 524 014
1.00	1.50	250	82 524 016
0.50	0.75	500	82 524 019
0.21	0.31	1200	82 524 021

Types	80 547 0		
	Voltage	Frequency	
	230-240V	50Hz	

Motor nom. Speed (rpm)	Rotational Speed (rpm)		Ratio	Mftrs. List No.
	250 rpm	375 rpm	(i)	
20	30	12.5	80 547 024	
10	15	25	80 547 015	
6	9	41.66	80 547 016	
4	10	62.5	80 547 017	
3	4.5	83.33	80 547 018	
2	3	125	80 547 019	
1	1.5	250	80 547 020	
0.5	0.75	500	80 547 021	

### Asynchronous geared motor, one direction



- Longer life
- Very silent
- Sintered bearing, oiled for life
- Speed from 4 to 38.4 rpm
- Rating power 9W
- **UL-CSA** approval



Type 82 662 0  
 Voltage 230V 50Hz  
 Direction of rotation AIG

MOT197

Speed (RPM)	Torque (max) Nm	Order Code	Price Each		
			1+	3+	10+
38.4	1.2	309-4420			
20	1.2	309-4431			
5	6	309-4443			
4	6	309-4455			

Continued