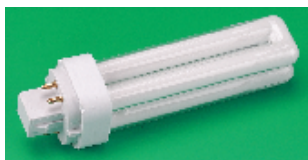


Compact Fluorescent Lamps — continued

Osram Dulux D/E For HF and Dimming Systems

OSRAM



- A compact double turn lamp without integral starter
- The four pin G24q base allows operation from normal electronic and dimmable electronic control gear
- Small size and symmetrical luminous distribution make these lamps ideal for compact, low profile luminaires

SEC142

Mftrs. List No.	Watts	Colour	Order Code	Price Each		
				1+	10+	30+
DDE104	10W	cool white	317-7853			
DDE102	10W	interna	317-7865			
DDE134	13W	cool white	317-7877			
DDE132	13W	interna	317-7889			
DDE184	18W	cool white	317-7890			
DDE182	18W	interna	317-7907			
DDE264	26W	cool white	317-7919			
DDE262	26W	interna	317-7920			

Osram Dulux L Lumilux

OSRAM



- Designed to replace conventional tubes in modern 600 600mm modular luminaires
- Four pin base requires the use of an external starter for operation on conventional control gear
- Suitable for operation on HF electronic control gear and for dimming systems
- Offers very good colour rendering

SEC144

Mftrs. List No.	Watts	Colour	Order Code	Price Each		
				1+	10+	30+
DL1884	18W	cool white	317-7762			
DL1882	18W	interna	317-7774			
DL2484	24W	cool white	317-7786			
DL2482	24W	interna	317-7798			
DL3684	36W	cool white	317-7804			
DL3682	36W	interna	317-7816			
DL4084	40W	cool white	317-7828			
DL4082	40W	interna	317-7830			
DL5584	55W	cool white	317-7841			

Osram Dulux S/E For HF and Dimming Systems

OSRAM



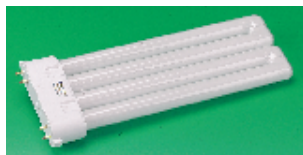
- Slim compact fluorescent with four pin base (2G7) for operation on high frequency electronic control gear
- Suitable for dimming applications

SEC143

Mftrs. List No.	Watts	Colour	Order Code	Price Each		
				1+	10+	30+
DSE584	5W	cool white	317-7932			
DSE582	5W	interna	317-7944			
DSE784	7W	cool white	317-7956			
DSE782	7W	interna	317-7968			
DSE984	9W	cool white	317-7970			
DSE982	9W	interna	317-7981			
DSE114	11W	cool white	317-7993			
DSE112	11W	interna	317-8006			

Osram Dulux F

OSRAM



- A flat format lamp for low profile luminaires
- An innovative light source that makes smaller luminaire designs possible
- Can be operated from conventional or electronic control gear

SEC126

Mftrs. List No.	Watts	Colour	Order Code	Price Each		
				1+	10+	30+
DF1884	18W	cool white	317-7403			
DF2484	24W	cool white	317-7415			
DF3684	36W	cool white	317-7427			

Lampholders

Compact Fluorescent



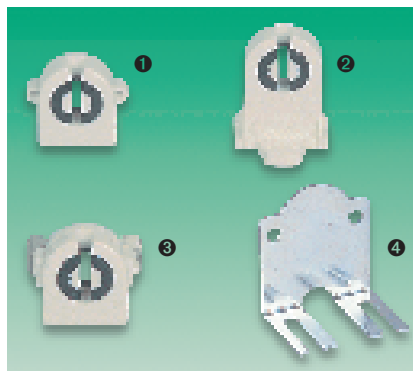
A compact range of lampholders with phosphor bronze push wire connectors.

L = 33, W = 35, D = 36, 2 Mtg holes Dia 4.5 @ 24 ctrs.
Horizontal or vertical mounting

SEC172X

For Lamp Type	Order Code	Price Each		
		1+	50+	100+ 500+
Dulux 'S' 2 Pin	258-866			

Fluorescent T8/T12



- 1 Screw (end mounting)
H = 27, W = 25
Mountings 2 holes Dia 3.2 @ 26 ctrs
- 2 Snap-fit (bottom mounting)
H = 38.5, W = 25
- 3 Snap-fit (end mounting)
H = 27, W = 25
- 4 Fixing bracket
H = 43, W = 35
2 fixing holes Dia 4.3 @ 24 ctrs

A range of snap-fit or screw fixing lampholders with a unique 'air-pass-rotor' system, resulting in cooler running temperatures. A mild steel bracket is available for end mounting lampholders.

Best value

SEC236X

Order Multiple=10	Order Code	Price Each		
		10+	100+	500+
Screw, end mounting	.530-608			
Snap-fit, bottom mounting	.530-610			
Snap-fit, end mounting	.530-621			
Fixing bracket	.530-633			

Fluorescent-Push on



Polycarbonate push-on lampholders accepting T8 or T12 fluorescent tubes. The lampholder is designed for electrical connection only when the lamp is supported by clips or other means.

SEC235X

Order Multiple=10	Type	Order Code	Price Each		
			10+	100+	500+
	T8	.530-645			
	T12	.530-657			

Health & Safety Data Sheets

Ring our Dataline on (65) 788 1922 to have COSHH sheets sent upon request.