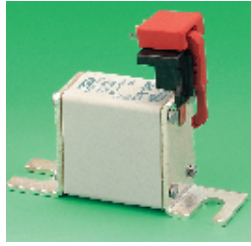
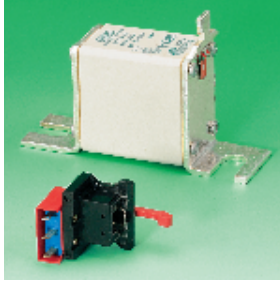
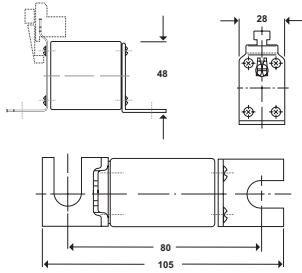


## European DIN 80 Fuses

### uR - 00 Size



**New** **SIBA**



- European style '00' size ultra rapid industrial semiconductor fuses
- Suitable for thyristor control applications eg. high speed switching inverters, variable speed drives
- Trip indication microswitch option for fuse interruption signalling
- UL recognised

Voltage rating 660V rms      Breaking capacity 300kA @600V  
200kA @ 700V

Current Rating (A)	Power Loss (W)	Pre-arcing Ft A's	Total Ft @660V A's	Mfrs. List No.	Order Code
35	8	66	360	20-412-20/35A	329-5199
50	12	140	770	20-412-20/50A	329-5205
63	14	250	1400	20-412-20/63A	329-5217
80	17	470	2600	20-412-20/80A	329-5229
100	21	730	4000	20-412-20/100A	329-5230
125	25	1300	7200	20-412-20/125A	329-5242
160	31	2800	15400	20-412-20/160A	329-5254
200	37	5000	27500	20-412-20/200A	329-5266
315	53	15600	86000	20-412-20/315A	329-5278
400	68	28400	156000	20-412-20/400A	329-5280

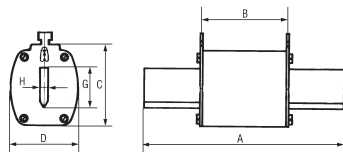
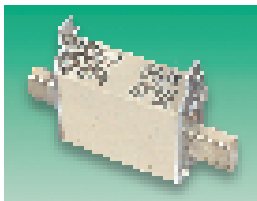
fus423

Rating	Order Code	Price Each				
		1+	5+	10+	20+	50+
35A	.329-5199					
50A	.329-5205					
63A	.329-5217					
80A	.329-5229					
100A	.329-5230					
125A	.329-5242					
160A	.329-5254					
200A	.329-5266					
315A	.329-5278					
400A	.329-5280					
Trip Indication Microswitch	329-5291					

## Industrial NH Fuses

### NH Series

**SIBA**



		Dimensions						
		A	B	C	D	G	H	
gL (General Line)	Size C00	78	48	36	20	15	6	
	Size 00	78	48	42	28	15	6	
	Size 1	134	67	55	40	20	6	
	Size 2	150	67	62.5	56	26	6	
aM (Motor Rated)	63A to 125A	Size 00	78	50	44	28	15	6

Industrial HRC low voltage fuses with a high breaking capacity, designed to give maximum protection against all faults, i.e. small overcurrents and short circuits. Status of operation of the fuse is shown by the visible leaf spring indicator. Construction from a corrosion resistant ceramic body with a high quality blade contact material. Manufactured in accordance with **DIN57636**, and **IEC269**.

#### gL (General Line)

Suitable for cable protection and applications where there are no surges to be absorbed. Approved to **VDE**, **SEV** and **OVE**.

Voltage rating 500V ac.

FUS234X

Current Rating	Order Code	Price Each			
		1+	25+	100+	250+
Size C00	16A	248-538			
	20A	.248-540			
	25A	.248-551			
	35A	248-563			
	50A	.248-575			
	63A	.248-587			
Size 00	80A	.248-599			
	100A	.248-605			
	125A	.248-617			
Size 1	160A	.248-629			
	200A	975-953			
Size 2	250A	975-965			
	315A	975-977			
	400A	975-989			
		975-990			

#### aM (Motor Rated)

Suitable for applications where an initial surge has to be absorbed (i.e. motor starters).

Voltage rating 660V ac.

Current Rating	Order Code	Price Each			
		1+	25+	100+	250+
Size 00	63A	499-535			
	80A	499-547			
	100A	499-559			
	125A	499-560			

#### UR (Ultra Rapid)

Suitable for Thyristor control unit applications (eg. variable speed drives).

Voltage rating 500V ac.

Current Rating	Order Code	Price Each			
		1+	25+	100+	250+
Size 00	63A	499-572			
	80A	499-584			
	100A	499-596			
	125A	976-003			
	160A	976-015			

## Fuse Base



Single pole ceramic fuse base suitable for use with all size '00' industrial NH fuses.

Rating 160A @ 660V ac

H = 52.5, W = 118.5, D = 33

FUS248X

Order Code	Price Each			
	1+	10+	20+	50+
499-523				

## Circuit Breakers for Equipment

### Thermal PCB Mounting



Miniature auto-resetting circuit breaker protects equipment against over current conditions.

H = 22mm W = 12.6mm D = 6mm  
Pin Spacing 7.5mm 2.3mm (Legs = 1.0 Dia.)

Current Rating	Max Interrupt Current	Trip Time	Overload Current	Internal Resistance mΩ	Order Code
1A	20A	<30s	<7s	<150	698-234
1.6A	20A	<30s	<7s	<100	698-246
2.5A	25A	<30s	<7s	<75	698-258
3A	30A	<30s	<7s	<35	698-260
5A	50A	<30s	<7s	<30	698-271

Voltage Rating 250Vac

FUS280

Current Rating	Order Code	Price Each			
		1+	25+	100+	250+
1A	698-234				
1.6A	698-246				
2.5A	698-258				
3A	698-260				
5A	698-271				