

## European Subminiature Fuses and Accessories — continued

### Radial Lead Micro Fuse



- Fast acting or time delay versions available
- Can be soldered directly into a print circuit board or plugged into a fuseholder (303-1780)
- SEMKO and VDE approved except for 5A
- UL recognised and CSA approved
- Complies with IEC60127-3



H = 7.7 Dia. = 8.4 Lead pitch = 5  
Lead length = 4.3 Lead dia. = 0.6

Voltage rating 250V ac Mftrs. List No. Fast Acting BK/EFF + rating  
Breaking capacity 35A or 10 times rated current Time Delay BK/ETF + rating  
(whichever is the greater)

FUS355

Order Multiple = 10		Price Each			
Rating	Order Code	10+	50+	100+	500+

Fast Acting		10+	50+	100+	500+
250mA	303-0015				
315mA	303-0027				
400mA	303-0039				
500mA	303-0040				
630mA	303-0052				
800mA	303-0064				
1A	303-0076				
1.25A	303-0088				
1.6A	303-0090				
2A	303-0106				
2.5A	303-0118				
3.15A	303-0120				
4A	303-0131				
5A	303-0143				
Time Delay		10+	50+	100+	500+
80mA	302-9864				
100mA	302-9876				
160mA	302-9888				
250mA	302-9890				
315mA	302-9906				
400mA	302-9918				
500mA	302-9920				
800mA	302-9931				
1A	302-9943				
1.25A	302-9955				
1.6A	302-9967				
2A	302-9979				
2.5A	302-9980				
3.15A	302-9992				
4A	303-0003				

### Radial Lead Micro Fuseholder



- Two pin socket for pcb mounting



H = 4.3 W = 7.6 D = 2.4  
Lead pitch = 5.0 Pin length = 3.1

FUS353

Order Multiple = 10		Price Each			
Mftrs. List No.	Order Code	10+	50+	100+	500+

BK/PCS	303-1780				
--------	----------	--	--	--	--

### TR5 Fuse Kit



Selection kit containing popular values from the TR5 fuse range and the PCB mounting socket. The kit can be restocked when required.

H = 20, W = 211, D = 105

Kit contains 10 each of the following:  
19370K Series (Quick blow) 250mA, 1A, 1.25A, 1.6A, 2A  
19372K Series (Antisurge) 160mA, 200mA, 315mA, 500mA, 630mA, 800mA,  
1A, 1.6A, 2A, 2.5A, 3.15A, 4A

19559 PCB Socket

FUS205

Order Code	1+	5+	10+
581-434			

## Automotive Fuses and Accessories

### Mini Blade - Fast Acting (F)



- Miniature blade style fuse
- Popular in automotive applications and compact portable equipment
- Colour coded for easy identification of value

H = 8.75 W = 10.92 D = 3.81 Blade L = 7.5

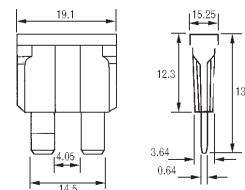
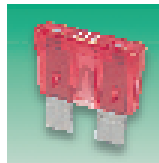
Voltage rating 32V dc Breaking capacity 1000A @ 32V dc

Mftrs. List No. 297 + Rating

FUS117

Order Multiple=5			Price Each				
Rating	Colour Code	Order Code	5+	25+	50+	100+	250+
2A	Grey	975-369					
3A	Violet	975-370					
4A	Pink	975-382					
5A	Tan	975-394					
7.5A	Brown	975-400					
10A	Red	975-412					
15A	Blue	975-424					
20A	Yellow	975-436					
25A	Natural	975-448					
30A	Green	975-450					

### ATO Series - Fast Acting (F)



Blade type fuses designed specifically for use in automotive applications although now particularly common in portable electronics. Fuses are colour coded for ease of identification.

Voltage rating 32V Breaking capacity 1000A Mftrs. List No. 257+Rating

FUS240

Order Multiple=10			Price Each				
Current Rating	Colour	Order Code	10+	50+	100+	250+	500+
1A	Black	581-483					
2A	Grey	581-495					
3A	Violet	540-286					
4A	Pink	581-501					
5A	Tan	540-298					
7.5A	Brown	540-304					
10A	Red	540-316					
15A	Blue	540-328					
20A	Yellow	540-330					
25A	Clear	540-341					
30A	Green	540-353					
40A	Amber	581-513					

### Fuse Kits



Selection kits containing popular values of the ATO series and Mini blade series, fast acting blade style automotive fuses. Complete with complementary fuse puller. The kits can be restocked when required.

ATO Kit Contains: 10 each 5A, 7.5A, 10A, 15A, 20A, 25A, 30A  
5 each 3A  
1 each Fuse puller

Mini Blade Kit Contains: 10 each 2A, 3A, 4A, 5A, 7.5A, 10A, 15A, 20A, 25A, 30A  
1 each Fuse puller

FUS193X

		Price Each		
Order Code		1+	5+	10+
ATO Kit	581-471			
Mini Blade Kit	927-764			