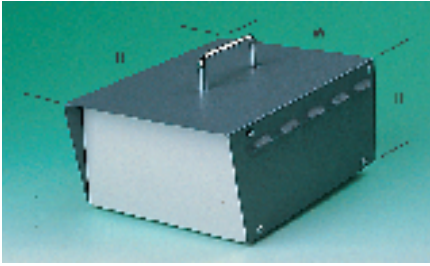


## Desktop & Instrument — continued

### Instrument Steel



- Two part mild steel cases for portable or bench top equipment
- Top cover provides protection for front and rear panels
- Ventilation louvres on sides aid cooling

External Dimensions			Material Thickness		Handle Height	Dark grey/ Light grey Order Code
H	W	D	Top Cover	Base		
120	200	282	1.0	1.2	37.0	518-888
160	300	232	1.0	1.2	37.0	518-890

BOX73

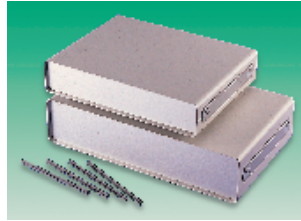
Mftrs. List No.	Order Code	1+	10+	25+	100+
<b>Dark Grey/Light Grey</b>					
518-0910	<b>518-888</b>				
518-0920	<b>518-890</b>				

NB To calculate the useful interior dimensions deduct 16mm from dimensions B0 & D0 and 8mm from dimension H0

BOX353

Mftrs. List No.	Order Code	1+	10+	25+
9002 303 03	<b>318-0669</b>			
9003 303 05	<b>318-0670</b>			
9004 304 03	<b>318-0682</b>			
9005 304 05	<b>318-0694</b>			
9010 403 03	<b>318-0700</b>			
9011 403 05	<b>318-0712</b>			
9012 404 03	<b>318-0724</b>			
9013 404 05	<b>318-0736</b>			
9018 503 03	<b>318-0748</b>			
9019-503 05	<b>318-0750</b>			

### Panel - 'Total Access' Steel



- Stylish, high quality desk top cases for instruments requiring all round access
- Manufactured in 0.9mm zinc coated steel with anodised front and rear panels
- Concealed front panel fixings give a clean frontal appearance
- Total accessibility is achieved by simple release of 4 side screws

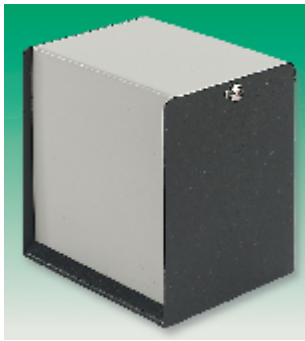
- Front panel, chassis side members and rear form an integral chassis which can be worked on prior to assembly of the top and bottom covers
- Supplied with non-slip ABS tilt feet. Optional card guides available.

Size	External Dimensions			Order Code
	H	W	D	
1	70	342	260	897-863
2	70	205	260	897-875
3	100	430	260	897-887
4	100	305	260	897-899
5	150	205	260	897-905
6	150	405	360	897-917

BOX190

Size	Mftrs. List No.	Order Code	1+	5+	10+	25+
1	212-201451C	<b>.897-863</b>				
2	212-201454H	<b>.897-875</b>				
3	212-201457B	<b>.897-887</b>				
4	212-201460B	<b>.897-899</b>				
5	212-201463G	<b>.897-905</b>				
6	212-201466A	<b>.897-917</b>				
<b>Clip in Guides for:-</b>						
Sizes 1 & 2	29-0122C	<b>644-444</b>				
Sizes 3 & 4	29-0124D	<b>644-456</b>				
Sizes 5 & 6	29-0126E	<b>644-468</b>				

### Steel Cases – '1454' Series



- Made of strong, economical 20-gauge steel
- Choice of sloping or vertical front panels by reversing case
- Grey/beige panels with textured black cover
- Assembled with four self-tapping screws and rubber feet (supplied)



Mftrs. List No.	L	W	D
1454C	64	102	51
1454E	127	102	51
1454F	152	102	76
1454G	64	152	51
1454H	191	127	64
1454K	89	203	64
1454L	152	127	102

BOX356

Mftrs. List No.	Order Code	1+	10+	100+	250+	500+
1454C	<b>353-7110</b>					
1454E	<b>353-7122</b>					
1454F	<b>353-7134</b>					
1454G	<b>353-7146</b>					
1454H	<b>353-7158</b>					
1454K	<b>353-7160</b>					
1454L	<b>353-7171</b>					

### Rack Cases – 'RM Series' ABS – Flame Retardant UL94V-0



- Moulded in ABS, flame retardant to **UL94V-0**
- Variety of PCB and component mounting features
- Card guide options for adding expandable cards
- **UL/CSA** vent patterns provided
- Removable front ABS panel
- All necessary hardware supplied



BOX277

External Dimensions				Order Code	Price Each		
H	W	D	Colour		1+	25+	50+
43	432	203	Black	<b>318-4523</b>			
43	432	203	PC bone	<b>318-4535</b>			

### '9000 Series' Small Plastic Enclosures

#### PS

- Two-tone enclosure system
- Fine grain surface
- Each part can be finished using standard tooling
- Board carrier panels to receive PCB as per **DIN41494 part 2**
- Delivery is made in kit form with assembly instructions



Mftrs. List No.	Wall thickness	Outer dimensions of enclosure			Board insert	
		Bo	Ho	Do	Width	Depth
9002-303-03	4	112.5	48.5	178.5	100	162
9003-303-05	4	112.5	48.5	228.5	100	212
9004-304-03	4	112.5	70.7	178.5	100	162
9005-304-05	4	112.5	70.7	228.5	100	212
9010-403-03	4	172.5	48.5	178.5	160	162
9011-403-05	4	172.5	48.5	228.5	160	212
9012-404-03	4	172.5	70.7	178.5	160	162
9013-404-05	4	172.5	70.7	228.5	160	212
9018-503-03	4	202.5	48.5	178.5	190	162
9019-503-05	4	202.5	48.5	228.5	190	212

## Junction & Terminal

### Junction/Terminal IP54, PVC

