

	Mftrs. List No.	Order Code	Price Each	5+	50+
Order Multiple=5					
Partition and Cover					
2.5-10mm ² standard	118-707-03	149-305			
Order Multiple=1				1+	50+
Protective cover, length 0.5M, fits 149-305	187-312-14	149-451			
Jumper Kits, 10 Way					
5mm pitch	176-277-05	530-566			
6mm pitch	168-973-07	147-499			
6mm pitch (for 147-493 Double-Deck)	173-520-22	239-446			
Order Multiple=5				5+	50+
Connector plate (for 239-446)	173-627-21	239-458			
Order Multiple=1				1+	50+
6mm pitch alternate + cover	116-541-12	178-733			
End Stops					
Order Multiple=5				5+	50+
Terminal	103-002-26	147-503			
Order Multiple=1				1+	50+
Metal (earth block)	162-855-23	145-356			
Markers, 6mm Pitch					
Card of 100 blank	233-000-01	147-506			
10 strips marked 1 to 10	233-002-20	147-507			
10 strips marked 11 to 20	233-003-20	147-508			
10 strips marked 21 to 30	233-004-21	147-509			
10 strips marked 31 to 40	233-005-22	147-510			
Markers, 5mm Pitch					
Card of 100 blank	231-000-07	178-730			
Card marked 1 to 100	231-030-24	178-729			
Order Multiple=5				5+	50+
Mounting Bracket					
M3/M5 metal insert	163-811-10	145-357			

Cable Size (mm ²)	VDE Contact Ratings	Height in Rail	Width	Pitch	Colour	Mftrs. List No.	Order Code	
Stranded	Solid							
4.0	4.0	35A 500V ac	31	28	6	Grey	110-491-17	150-221
4.0	4.0	35A 500V ac	31	28	6	Blue	120-491-11	150-222
Earth								
4.0	4.0	—	31	28	6	Green/Yel	160-496-26	150-223

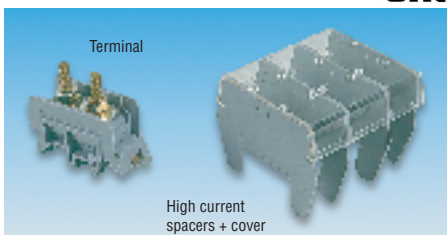
Order Multiple=10	Order Code	10+	Price Each	50+	100+	500+
Type						
Feed through – grey	.150-221					
Feed through – blue	.150-222					
Earth	.150-223					

Accessories



Accessories	Terminal Order Codes	Mftrs. List No.	Order Code
End cover, feed through – screw, 6.3 tab	150-221/2/7/8	117-600-03	150-229
End cover, feed through – 2.8 tab	150-225/6	114-560-27	150-231
Partition	—	173-016-10	150-232
End Stop	—	164-716-21	150-233
Jumper kit, 6mm pitch – 10 way	—	173-226-27	150-234
Markers, blank (10 strips of 10)	—	230-000-12	150-235
Markers, strips marked 0 - 9 (10 strips of 10)	—	230-001-07	150-236

High Current Terminal & Accessories



High current spacers + cover

H = 56.5,
W = 66

Terminal has 2 M6 studs linked by removable bar. Spacers provide additional isolation. Cover snaps on to spacers.

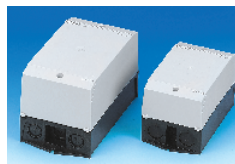
Cable Size (mm ²)	Nominal Current	Voltage Rating	Pitch	Approvals	Mftrs List No.	Order Code	
Stranded	Solid						
25	35	115A	1000V ac	26	1, 2	115-140-23	145-355
High current spacer/end cover							
Transparent cover for 3 high current terminals							
						113-689-24	145-370
						163-403-20	145-369

CTL077

Order Multiple=1	Price Each	1+	10+	50+
Terminal	.145-355			
Cover	.145-369			
Order Multiple=5		5+	10+	50+
Spacer	.145-370			

Order Multiple=10	Order Code	10+	Price Each	50+	100+
End Covers					
Feed through, screw – 6.3 tab	.150-229				
Feed through – 2.8 tab	.150-231				
Partition	.150-232				
End Stop	.150-233				
Order Multiple=1		1+	10+	100+	
Jumper Kit, 10 way	.150-234				
Markers					
Blank (10 strips of 10)	150-235				
Marked 0 - 9 (10 strips of 10)	150-236				

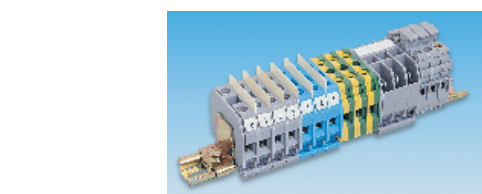
CI-K Enclosures IP65



- Push Through membrane cable entry
- Standard protection of IP65
- With mounting plate or rail
- Enclosure covers RAL 7035 grey
- -25°C to +70°C
- 5 different base sizes available

Mftrs List No.	Description	H	W	D	Order Code
CI-K1-95-TS	With Rail	80	120	95mm	320-3086
CI-K2-100-TS	With Rail	100	160	100mm	320-3098
CI-K2-100-M	With Plate	100	160	100mm	320-3104
CI-K2-145-TS	With Rail	100	160	145mm	320-3116
CI-K2-145-M	With Plate	100	160	145mm	320-3128
CI-K3-125-TS	With Rail	120	200	125mm	320-3130
CI-K3-125-M	With Plate	120	200	125mm	320-3141
CI-K4-125-TS	With Rail	160	240	125mm	320-3153
CI-K4-125-M	With Plate	160	240	125mm	320-3165
CI-K4-160-TS	With Rail	160	240	160mm	320-3177
CI-K4-160-M	With Plate	160	240	160mm	320-3189
CI-K5-125-TS	With Rail	200	280	125mm	320-3190
CI-K5-125-M	With Plate	200	280	125mm	320-3207

CTL347

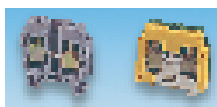


A range of miniature terminals designed for mounting on to miniature symmetric DIN Rail to **DIN46277 Part 2** in accordance with **EN50045**. The terminals are moulded in tough flame resistant nylon 6-6. Working temperature range -55°C to 130°C.

FOR SUITABLE DIN RAIL SEE ORDER CODE 177-126 OR 178-191
ON **PAGE 586**

CTL085

Screw Terminals



Feed through Earth

