

4mm Plugs and Sockets — continued

4mm Triple Contact Plug 10A



The screw-on cover has a large cable entry for audio or test leads and can be fitted after the lead has been made up. The plug has a low mating resistance and screw termination.

L = 50, Dia = 10, Cable entry = 7.1, Wire dia = 3.5 max

Current rating 10A
Housing Acetal
Contacts Brass, nickel plated

Mftrs. List No. 557-0500 = 152-329, 557-0100 = 152-330

CS179

Order Multiple=5		Price Each			
Colour	Order Code	5+	50+	100+	250+
Red	.152-329				
Black	.152-330				

4mm Bunch Pin Plugs 10A



The plug features multi-spring bunch pin contacts and a 4mm cross hole to enable multiple connections to one socket.

L = 60, Dia = 10

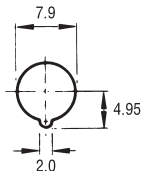
Current rating 10A
Housing PVC
Contacts Brass, nickel plated

Mftrs. List No. 555+Colour

CS180

Colour	Order Code	Colour	Order Code	Colour	Order Code
Red	.150-033	Green	.150-035	Yellow	.150-037
Black	.150-034	Blue	.150-036	White	.150-038
Order Code		Price Each			
.All colours		1+	50+	100+	250+ 500+

4mm Panel Sockets 10A



L = 29, Dia = 11.5, Panel thickness = 13 max.

Panel cut-out

A range of 4mm panel mounting sockets suitable for 4mm single pole, stackable or standard plugs. The turned contacts feature robust solder buckets for ease of solder termination.

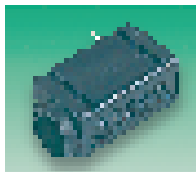
Current rating 10A
Housing Polypropylene
Contacts Brass, tin plated

Mftrs. List No. 563-0500 = 149-416, 563-0100 = 149-546, 563-0400 = 149-547, 563-0200 = 149-548, 563-0700 = 149-549, 563-0600 = 149-550

CS181

Colour	Order Code	Colour	Order Code	Colour	Order Code
Red	.149-416	Green	.149-547	Yellow	.149-549
Black	.149-546	Blue	.149-548	White	.149-550
Order Multiple=5		Price Each			
.All colours		5+	50+	100+	250+ 500+

4mm PCB Sockets 10A



A range of 4mm PCB sockets with two pin through board termination, providing good stability. The sockets are side stackable with dovetail locators. 5

H = 12.2, W = 10, D = 23.5, Fixing centres = 15.5 1.8 dia
Socket hole centre = 7.5 above board

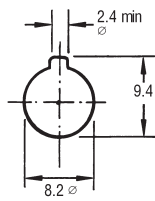
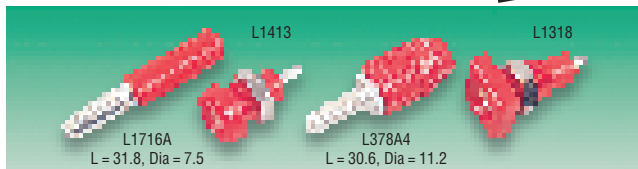
Current rating 10A
Housing Polypropylene
Contacts Brass, tin plated

Mftrs. List No. 571-0500 = 150-039, 571-0100 = 150-040, 571-0400 = 150-041, 571-0200 = 150-042, 571-0700 = 150-043, 571-0600 = 150-044

CS182

Colour	Order Code	Colour	Order Code	Colour	Order Code
Red	150-039	Green	150-041	Yellow	150-043
Black	150-040	Blue	150-042	White	150-044
Order Multiple=5		Price Each			
All colours		5+	50+	100+	250+ 500+

4mm 10A



Panel cut-out

Uses the O-Z principle which is devised to provide particularly low resistance, so that heavy current contacts will not jump out under vibration.

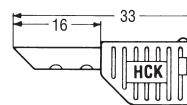
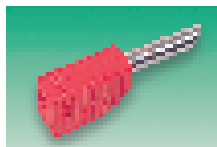
Breakdown voltage 5kV dc
Current rating 10A
Maximum temperature 85°C
Housing Polypropylene
Maximum cable entry for L378A4 and L1716A 4mm

CS183

Colour	Mftrs. List No.	Order Code	1+	100+	500+	1000+
Slim Plug						
Red or Black	L1716A/RED	317-135				
	L1716A/BLACK	317-147				
Circular Panel Socket						
Red or Black	L1413/RED	317-159				
	L1413/BLACK	317-160				
Standard Plug						
Red or Black	L378A4/RED	317-172				
Green or Yellow	L378A4/BLACK	317-184				
	L378A4/GREEN	317-196				
	L378A4/YELLOW	317-214				
Square Panel Socket						
Red or Black	L1318/RED	317-226				
Green	L1318/BLACK	317-238				
	L1318/GREEN†	317-240				

†Available until stocks are exhausted

4mm Hermaphrodite Stackable Plugs 20A



H = 12.0, W = 8.0

Current rating 20A
Operating voltage 30V ac/60V dc
Temperature range -40°C to +75°C

Housing Polyamide 66, UL94-HB
Contacts Beryllium copper, nickel plated
Termination Solder

Mftrs. List No. H491N+Colour

CS184

Colour	Order Code	Colour	Order Code	Colour	Order Code
Red	143-888	Green	143-889	Yellow	143-891
Black	143-887	Blue	143-890	White	143-892
Order Multiple=5		Price Each			
All colours		5+	50+	100+	250+ 500+

Free Same Day Delivery

For orders received before 12.30pm we provide free same day delivery.