

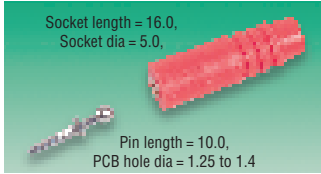
Current rating	3A	Housing	Thermoplastic, UL94V-0
Operating voltage	200V ac	Contacts	Phosphor bronze, tin plated
Contact resistance	10mΩ max.	Mating cycles	20
Temperature range	-55°C to +85°C		

Mftrs. List No. WP22-1x where x = R - red, B - black, W - white

CS257

100 Per Pack		Price Per Pack				
Colour	Order Code	1+	5+	10+	50+	100+
Red	462-986					
Black	462-998					
White	463-000					

'SNAPLOX' 7A



A range of PCB connectors designed with a ball and socket arrangement ideally suited for electronic testing where quick and consistent connections are required. The sockets can move through an angle of 60° beyond which it detaches itself. Being spherical, the connection has at least four points of contact, ensuring a low contact resistance and minimum electrical noise.

Current rating	7A	Contacts	Brass ball pin palladium over silver plating
Contact resistance	2mΩ max	Housing	PTFE
Temperature range	-55°C to +125°C		
Maximum wire size	1.55mm O.D.		

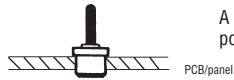
Mftrs. List No. Socket = LSB2/156/Colour, Pin = 050/LT/B2

CS169

	Order Code	1+	50+	100+	250+	500+	1000+
Socket – black	145-322						
Socket – red	145-323						
Socket – white	145-326						
Ball-ended pin	145-327						

Press-Fit PTFE Components

Insulated (Stand Off) Miniature Terminals **ITT Cannon**



A press-fit terminal suitable for soldering wires and components to.

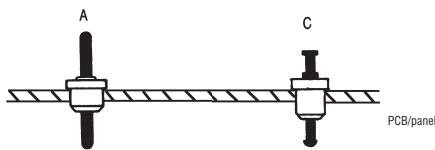
Height Overall mm	Mounting Hole mm	Mftrs. List No.	Order Code
8.9	3.5	013-1000-040519	143-375
8.9	2.0	003-1009-040519	143-376

CS207

	Order Code	1+	50+	100+	250+	500+
	143-375					
	143-376					

Insulated Feed-Through Terminals

ITT Cannon



143-366

143-365

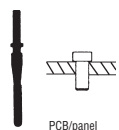
Style	Height Overall mm	Mounting Hole mm	Mftrs. List No.	Order Code
A	13.10	3.5	011-1004-040519	143-366
A	13.10	2.2	001-1007-040519	143-367
C	13.70	4.0	011-2049-040519	143-365

CS208

	Order Code	1+	50+	100+	250+	500+
Style A	143-366					
A	143-367					
C	143-365					

Two Piece Terminal

ITT Cannon



● A loose fit bush that expands when the terminal is inserted

Height Overall mm	Mounting Hole mm	Mftrs. List No.	Order Code
15.87	2.3	101-1411-00109	965-807
17.55	3.9	201-1412-001510	143-377
		011-1409-041609	143-370

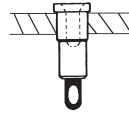
◆Note: Lug and bush are ordered separately

CS209

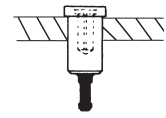
Order Code	1+	50+	100+	250+	500+
965-807◆					
143-377◆					
143-370					

2mm Test Point Sockets – Gold Plated

ITT Cannon



Solder lug



Solder pin

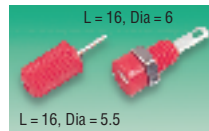
Height Overall mm	Mounting Hole mm	Mftrs. List No.	Order Code
16.80	4.4	016-8010-040209	143-374
11.10	4.4	016-2000-040209	143-373

CS210

	Order Code	1+	50+	100+	250+	500+
Termination Solder lug	143-374					
Solder pin	143-373					

1mm Connectors

1mm 1A



A 1mm single pole plug and socket with silver plated contacts. Available in either red or black and suitable for low voltage.

Current rating 1A

Panel cut-out = 4.8 dia

Mftrs. List No. 450-0500 = 147-009, 450-0100 = 147-020, 449-0100 = 147-008, 449-0500 = 147-019

CS170

Order Multiple=5	Order Code	5+	20+	50+	100+	250+
Plugs Red	147-009					
Black	147-020					
Sockets Red	147-008					
Black	147-019					

2mm Plugs, Sockets and Probes

2mm Plug 6A



Nickel plated brass 2mm pin and flexible shatter-proof insulating sleeve. Solder connection. max lead dia. 1.9mm.

L = 37, Dia. = 4.8

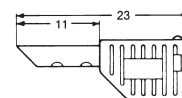
Operating voltage	50V	Temperature range	-20° to +60°C
Continuous load current	6A	Housing	PVC
Contact resistance	6mΩ	Contacts	Brass, nickel plated

Mftrs. List No. MST3+Colour

CS307

	Order Code	1+	10+	25+	50+	100+
5 Per Pack Red	497-216					
Black	497-228					
Red, Black, Blue, Yellow, Green	497-241					

2mm Hermaphrodite Stackable Plugs 7.5A



W = 7.0, H = 4.5

Stackable spring hollow tube manufactured from nickel plated beryllium copper
 Current rating 7.5A
 Operating voltage 30V ac/60V dc
 Temperature range -40°C to +75°C
 Mftrs. List No. H291N+Colour

CS171

Colour	Order Code	Colour	Order Code	Colour	Order Code
Red	148-093	Green	148-095	Yellow	148-097
Black	148-094	Blue	148-096	White	148-098

Order Multiple=5	Price Each				
5+	25+	50+	100+	250+	500+
All colours					