

## Phase-Changeover Plug

Two of the phase-Pins are mounted on an insulated base which can be quickly and easily rotated to change motor direction thereby avoiding the time consuming necessity to re-wire the plug.

ele932

Phase Changer	Poles	Mftrs. List No.	Order Code	1+	5+	10+	25+
400V, 16A	3P+N+E	210PH	<b>843-660</b>				

## Free Plugs, IP67 Straight

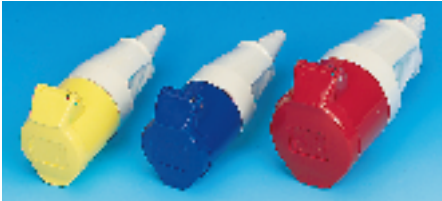


- Conforms to **BS4343, EN60309 1 & 2** and **CEE17**
- Fitted with locking ring and gasket
- Flared rear cable entry to reduce chafing

ele933

Voltage & Amps	Poles	Mftrs. List No.	Order Code	1+	5+	10+	25+
110V, 16A	2P+E	219304	<b>723-2123</b>				
230V, 16A	2P+E	219306	<b>723-2135</b>				
400V, 16A	3P+E	219406	<b>723-2147</b>				
400V, 16A	3P+N+E	219	<b>723-2159</b>				
110V, 32A	2P+E	239304	<b>723-2160</b>				
230V, 32A	2P+E	239306	<b>723-2172</b>				
400V, 32A	3P+E	239406	<b>723-2184</b>				
400V, 32A	3P+N+E	239	<b>723-2196</b>				
230V, 63A	2P+E	269306	<b>716-2674</b>				
400V, 63A	3P+E	269406	<b>716-6345</b>				
400V, 63A	3P+N+E	269	<b>716-6527</b>				
230V, 125A	2P+E	279306	<b>716-6620</b>				
400V, 125A	3P+E	279406	<b>716-6679</b>				
400V, 125A	3P+N+E	279	<b>716-6758</b>				

## Free Sockets, IP44 Straight



- Conforms to **BS4343, EN60309 1 & 2** and **CEE17**
- Fitted with spring loaded cover
- Long grommet clearly marked with cable diameter sizes for best fit

ele934

Voltage & Amps	Poles	Mftrs. List No.	Order Code	1+	5+	10+	25+
110V, 16A	2P+E	310304	<b>723-2202</b>				
230V, 16A	2P+E	310306	<b>843-647</b>				
400V, 16A	3P+E	310406	<b>723-2214</b>				
400V, 16A	3P+N+E	310	<b>843-532</b>				
110V, 32A	2P+E	330304	<b>716-0082</b>				
230V, 32A	2P+E	330306	<b>716-0630</b>				
400V, 32A	3P+E	330406	<b>716-1440</b>				
400V, 32A	3P+N+E	330	<b>716-2066</b>				

## Free Sockets, IP67 Straight



- Conforms to **BS4343, EN60309 1 & 2** and **CEE17**
- Fitted with spring loaded cover, locking ring and cover

ele935

Voltage & Amps	Poles	Mftrs. List No.	Order Code	1+	5+	10+	25+
110V, 16A	2P+E	319304	<b>723-2226</b>				
230V, 16A	2P+E	319306	<b>723-2238</b>				
400V, 16A	3P+E	319406	<b>723-2240</b>				
400V, 16A	3P+N+E	319	<b>723-2251</b>				
110V, 32A	2P+E	339304	<b>723-2263</b>				
230V, 32A	2P+E	339306	<b>723-2275</b>				
400V, 32A	3P+E	339406	<b>723-2287</b>				
400V, 32A	3P+N+E	339	<b>723-2299</b>				
230V, 63A	2P+E	369306	<b>716-6321</b>				
400V, 63A	3P+E	369406	<b>716-4001</b>				
400V, 63A	3P+N+E	369	<b>716-6588</b>				
230V, 125A	2P+E	379306	<b>716-6667</b>				
400V, 125A	3P+E	379406	<b>716-6680</b>				
400V, 125A	3P+N+E	379	<b>716-6801</b>				

## Cee-View Plugs & Connectors, IP44 Clear Rear



- The Clear Rear offers a fast time saving facility for visual inspection without the need for tools NO screws to remove and replace
- 2P+E, 16A, Long Grommet

ele936

	Voltage	Mftrs. List No.	Order Code	1+	5+	10+	25+
Plug	110V	210304CL	<b>723-2305</b>				
Coupler	110V	310304CL	<b>723-2317</b>				
Plug	230V	210306CL	<b>723-2329</b>				
Coupler	230V	310306CL	<b>723-2330</b>				

## Lockable Plug and Socket, IP44 16 Amp

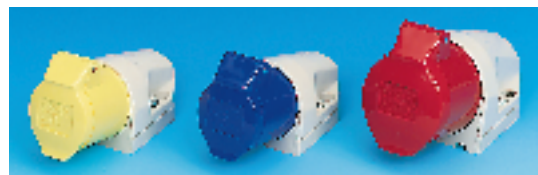


- 230V Blue, 2P+E

ele937

	Mftrs. List No.	Order Code	1+	5+	10+	25+
Plug	212306	<b>723-2342</b>				
Angled Socket	512306	<b>723-2354</b>				

## Surface Sockets, IP44 Top Entry



- Conduit entry M20 on 16A units and M25 on 32A units

ele938

Voltage & Amps	Poles	Mftrs. List No.	Order Code	1+	5+	10+	25+
110V, 16A	2P+E	110304	<b>723-2366</b>				
230V, 16A	2P+E	110306	<b>723-2378</b>				
400V, 16A	3P+E	110406	<b>723-2380</b>				
400V, 16A	3P+N+E	110	<b>723-2391</b>				
110V, 32A	2P+E	130304	<b>716-0343</b>				
230V, 32A	2P+E	130306	<b>716-1256</b>				
400V, 32A	3P+E	130406	<b>716-1610</b>				
400V, 32A	3P+N+E	130	<b>718-3227</b>				

continued