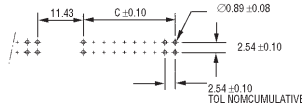
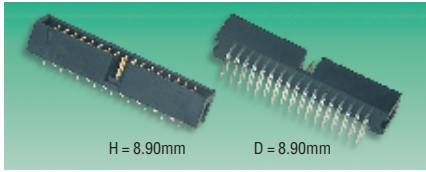


Standard Density IDC 0.05" Cable Pitch — Continued

PCB Mounting Box Headers

(low profile)

Bump Polarisation



CI201

No. of Ways	Mftrs. List No	Order Code	Price Each				
			1+	50+	100+	500+	1000+

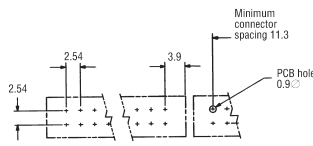
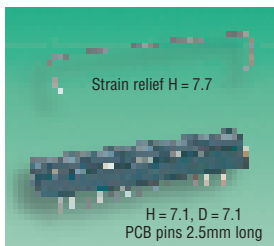
Straight PCB Pins

10	636-1027	618-068
14	636-1427	618-070
16	636-1627	618-081
20	636-2027	618-093
26	636-2627	618-100
34	636-3427	618-111
40	636-4027	618-123
50	636-5027	618-135

90° PCB Pins

10	636-1007	618-159
14	636-1407	618-160
16	636-1607	618-172
20	636-2007	618-184
26	636-2607	618-196
34	636-3407	618-202
40	636-4007	618-214
50	636-5007	618-226

Mini DIP PCB Solder Transition 0.1" 0.1" Pitch



Recommended PCB hole pattern viewed from components side of board

Max. height incl. strain relief = 8.8

CI177

No. of Ways	Mftrs. List No.	Order Code	Price Each				
			1+	50+	100+	500+	1000+

Transition Connector

10	636-1053	223-001 †
16	636-1653	223-025 †
20	636-2053	223-037 †
24	636-2453	223-049 †
26	636-2653	223-050 †
34	636-3453	223-062 †
40	636-4053	223-074 †
50	636-5053	223-086 †
60	636-6053	223-098

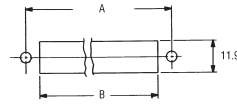
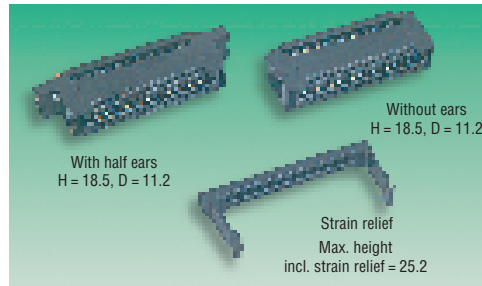
Order Multiple=10

Optional Strain Relief

10	622-1033	223-104
14	622-1433	223-116
16	622-1633	223-128
20	622-2033	223-130
26	622-2633	223-153
34	622-3433	223-165
50	622-5033	223-189

† Available until stocks are exhausted

Card Edge 2.54 Pitch



No. of Ways	Length A	Length B
20	45.7	37.8
34	63.5	55.6
50	83.8	75.9
60	96.5	88.6

Panel cut-out for 636-XX25 series

Available with or without half ears, both suitable for printed circuit boards of 1.45mm to 1.8mm thickness. Optional strain relief is also available for version without half ears.

CI178

No. of Ways	Mftrs. List No.	Order Code	Price Each				
			1+	50+	100+	500+	1000+

With Half Ears

20	636-2025	209-077 †
34	636-3425	209-090 †
50	636-5025	209-107

Without Ears

20	636-2015	209-120 †
26	636-2615	209-132 †
34	636-3415	209-144 †
50	636-5015	209-156 †
60	636-6015	209-168 †

Strain Relief

34	636-3435	222-963 †
50	636-5035	222-975 †
60	636-6035	222-987 †

† Available until stocks are exhausted

Industrial Performance ID



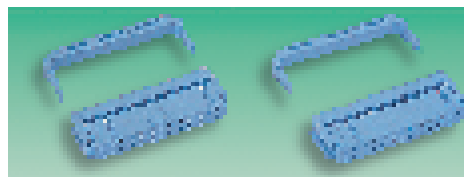
- One piece connector
- Reduces installation time and misalignment errors

Housing	Glass reinforced thermo plastic UL94V-0
Contacts	Beryllium copper, 30µ" gold over nickel plating
Mechanical endurance	>200 cycles
Operating temperature	-55°C to +125°C
Dielectric withstanding voltage	>500V rms @ sea level
Contact rating	1A
Insulation resistance	>1 10 ⁹ Ω @ 500V dc

Specifications common to all Standard Density IDC 0.05" Cable Pitch Connectors unless otherwise stated.

CI29

Female Socket (with Strain Relief) Fork Type ID



- Tuning fork type insulation displacement (ID)
- Dual slot polarisation
- Suitable for various header types

FOR SUITABLE CRIMP TOOLS SEE PAGE 265

CI173

No. of Ways	Mftrs. List No.	Order Code	Price Each				
			1+	50+	100+	500+	1000+

Clip Polarisation

10	622-1001	.152-709 †
14	622-1401	.152-710 †
16	622-1601	.152-711 †
20	622-2001	.152-712 †
26	622-2601	.152-713 †
34	622-3401	.152-714 †
40	622-4001	.152-715
50	622-5001	.152-716
60	622-6001	152-717