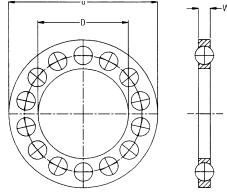


Acetal, Plastic & Glass Bearings — continued

Thrust Races



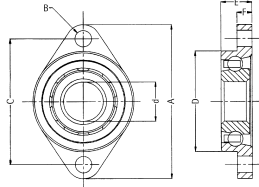
- Carbon steel balls
- Typical application: rotating equipment

D	d	W	PCD	Mfrs' List No.	Order Code
10,2	21,7	3	15,6	FT10M/1B/D	700-2440
1/4"	9/16"	1/16"	7/16"	FT4/1B/D	700-2452
8,1	21,7	3	15,6	FT8/1B/D	700-2464
27,3	41	3	33,3	51105M/1B/D	700-2476

bas5

Mfrs. List No.	Order Code	1+	10+	25+	50+	100+
FT10M/1B/D	700-2440					
FT4/1B/D	700-2452					
FT8/1B/D	700-2464					
51105M/1B/D	700-2476					

Flanged Bearing Housings



- Stainless steel balls

d	C	A	D	F	E	B	Mfrs' List No.	Order Code
10	40	51,0	32,0	4,76	10,0	5	SFT10/4N/D	700-2660
12	47	63,5	32,0	4,00	9,0	6	SFT12/4N/D	700-2671
20	63	84,0	42,5	4,00	10,5	8	SFT20/4N/D	700-2683

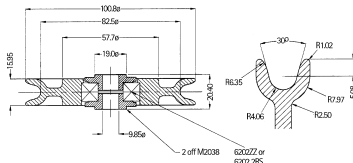
bas6

Mfrs. List No.	Order Code	1+	10+	25+	50+	100+
SFT10/4N/D	700-2660					
SFT12/4N/D	700-2671					
SFT20/4N/D	700-2683					

Heavy Duty Standard Bearing



- Plastic pulley with inserted steel bearing
- Typical application: gym equipment

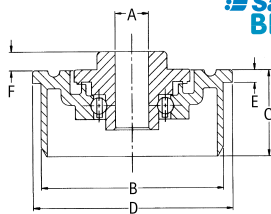


O/Dia.	Pitch Dia.	Load kg	Mfrs. List No.	Order Code
100.80	82.50	200	AIB62024.OP/B/HD WITH M2038 ADAPTOR X2	700-2804
156.38	133.10	200	AIB62026.OP/B/HD WITH M2038 ADAPTOR X2	700-2816

bas7

O/Dia.	Order Code	1+	10+	25+	50+	100+
100.80	700-2804					
156.38	700-2816					

Euro-Seal End Caps

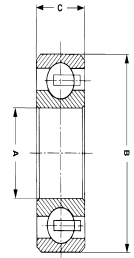


A	B	C	D	E	F	Engagement	Flange	Mfrs. List No.
M8	44,90/45,08	40,0	49,20/49,40	4,0	6,6	44,9/45,08	49,2/49,3	D5006

bas8

Mfrs. List No.	Order Code	1+	10+	25+	50+	100+
D5006	700-2830					

Radial Ball Bearings - Glass Balls



- Glass balls
- Typical applications: conveyor sections of the P.C.B. manufacturing industry
- The most chemical resistant bearing available for the industry

A	B	C	Capacity kg	Mfrs. List No.	Order Code
1/2"	1 3/8"	3/4"	12	CM8PPG	721-2641
3/8"	1 3/8"	3/8"	12	CM10PPG	721-3682

bas92

Order Code	1+	10+	25+	50+	100+
721-2641					
721-3682					

Self Adjusting, Maintenance-Free Bearings

IGUBAL

Igubal[®] bearings provide developers with a complete system of bearing elements for a wide range of applications.

The bearings can all be used for technically dry applications, are highly insensitive to dirt, can run in liquids and even in chemicals and are completely corrosion proof. Being 20% the weight of steel they are ideal for pneumatic applications but can still absorb the high forces necessary for many jobs.

Features of the range include:-

- No need for additional maintenance
- No contamination by oil or grease
- No failure due to lubricant ageing
- Service temperature from -40°C to +80°C
- All dimensions to DIN648

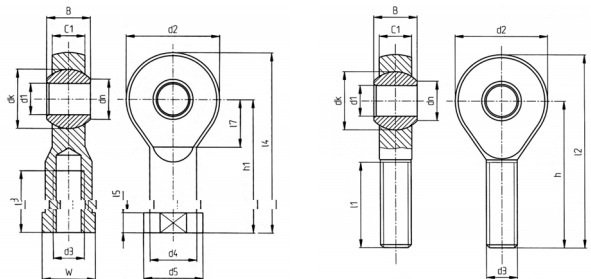
bas98

Spherical Rod-End

IGUBAL



- Particularly suitable for mounting rotating shafts, in this case the shaft itself rotates in the bearing cap
- Adapts to all angular deviations
- Corrosion-resistant in moist or wet environments and the sliding bearings are resistant to weak acids and alkalis
- Very high fatigue strength under changing loads
- High rigidity and low weight – a fifth of conventional metallic bearing housings



Male Rod Ends

d ₁	d _n	d ²	d ⁴	C ¹	B	h	l ¹	l ²	List No.	Order Code
5	7,7	18	11,1	6,0	8	33	19	42	KARM-05	721-9350
6	8,9	20	12,7	7,0	9	36	21	46	KARM-06	721-9362
8	10,3	24	15,8	9,0	12	42	25	55	KARM-08	721-9374
10	12,9	30	19,0	10,5	14	48	28	63	KARM-10	721-9386
12	15,4	34	22,2	12,0	16	54	32	71	KARM-12	721-9398
14	16,8	38	25,4	13,5	19	61	36	79	KARM-14	721-9404
16	19,3	42	28,5	15	20	66	37	88	KARM-16	721-9416

Mfrs'